

**Global Center of Excellence (GCOE) Program,  
“International Research Center for  
Molecular Science in Tooth and Bone Diseases”,  
Tokyo Medical and Dental University**

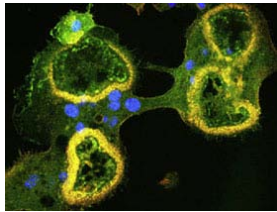
**GCOE International Presentation**

**Monday 12:30–14:00**

**Venue: Auditorium, Dental School (4F )**

**14<sup>th</sup> March 2 2009**

**『Osteoclast biology and osteoimmunology』**



**Hiroshi Takayanagi  
Chair: Yoshihiro Ogawa**

**15<sup>th</sup> March 9 2009**

**『NLK signaling regulates head formation』**



MEF2A

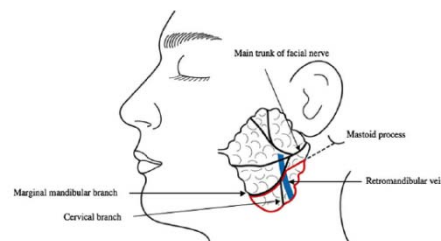
NLK

**Hiroshi Shibuya  
Chair: Ikuo Morita**

**16<sup>th</sup> March 16 2008**

**『Non-invasive diagnosis of oral cancer』**

**Ken Omura  
Chair: Fumitoshi Ishino**



**Open Seminar**

