



Joint Degree Doctoral Program in Medical Sciences between Tokyo
Medical and Dental University and Mahidol University

Self-assessment report

<Term for evaluation: April 2023 - March 2024>

Contents

1. Mechanism for implementation of the JD Program	1
1-1. Joint implementation structure.....	1
1-1-1. Joint committees	1
1-1-2. Communication method.....	3
1-2. Policies.....	4
1-2-1. Diploma Policy	4
1-2-2. Curriculum Policy	5
1-2-3. Admission Policy.....	9
1-3. Quality Assurance System	11
1-3-1. Self-assessment	11
1-3-2. External assessment	11
1-3-3. Feedback of assessment results	12
1-3-4. Information publication	13
2. Operation of the JD Program	15
2-1. Progress of the JD Program operation	15
2-2. Fulfillment of student capacity	17
2-3. Syllabuses.....	18
2-4. Evaluation method and criteria	20
3. Student Support.....	23
3-1. Student support system.....	23
3-1-1. Accommodation	23
3-1-2. Research environment.....	23
3-1-3. Financial support	24

1. Mechanism for implementation of the JD Program

1-1. Joint implementation structure

1-1-1. Joint committees

[Evaluation indicator]

Appropriate committees for discussing important matters of educational activities and examining curricula/ and educational methods are organized and active.

[Plan]

Tokyo Medical and Dental University (hereafter referred to as “TMDU”) and Mahidol University (hereafter referred to as “MU”) will jointly establish committees to discuss important matters of education and research and to examine curricula and educational methods.

The committees are:

- (1) Dean Council
The Dean Council calls meetings at least once a year to deliberate important matters of education and research.
- (2) Program Administrative Committee
The Program Administrative Committee examines credit recognition for each subject. Entrance examinations, curriculum development, regular examinations and reporting assignment are also managed by this committee.
- (3) Dissertation Proposal Defense committee
The Dissertation Proposal Defense committee examines students in the Dissertation Proposal examinations at the first semester of the second year.
- (4) Dissertation Defense Committee
The Dissertation Defense Committee conducts dissertation defense.
- (5) External Assessment Committee
The External Assessment Committee conducts external assessment.

[Current situation]

Two committees, namely the Dean Council and the Program Administrative Committee, are organized and active on the established rules.

The meeting of the Dean Council was held in March 2024, and the Program Administrative Committee meeting has been conducted regularly according to the academic schedule, discussing various topics regarding education, program operation, and dissertation defense, with everything progressing as expected thus far.

<Past committee meetings>

(1) Dean Council

The Dean Council meeting was conducted by email on March 25, 2024, for reviewing matters that were discussed and settled between April 2023 and March 2024, and finally approving the self-assessment results for 2022. The next Dean Council meeting is scheduled to be held in February or March 2025.

(2) Program Administrative Committee

Both TMDU and MU are scheduling and conducting regular Committee meetings according to the academic schedule.

(Table 1)

Date	
April 27, 2023	1st meeting
July 20, 2023	2nd meeting
July 25, 2023	3rd meeting (email)
August 25, 2023	4th meeting (email)
October 18, 2023	5th meeting (email)
October 26, 2023	6th meeting
December 11, 2023	7th meeting (email)
December 14, 2023	8th meeting
January 12, 2024	9th meeting (email)
February 15, 2024	10th meeting (email)
February 28, 2024	11th meeting
March 5, 2024	12th meeting
March 14, 2024	13th meeting(email)

1-1-2. Communication method

[Evaluation indicator]

Appropriate communication method is established.

[Plan]

The TMDU-MU Partnership Siriraj Office, established by TMDU in the Faculty of Medicine, Siriraj Hospital at MU, and the online communication system will be used for communicating with each other.

[Current situation]

Both TMDU and MU are using the online communication system for holding meetings that are convened by the program administrative committee mentioned above, for joint interviews during the entrance examination, and for organizing meetings with TMDU members and students.

Moreover, the TMDU-MU Partnership Siriraj Office in Thailand, equipped with a computer, copy machine, tables, and chairs, is being used for holding meetings between TMDU faculty members and students, especially when the former visit MU.

[Evaluation of 1-1. Joint implementation structure]

		2020	2021	2022	2023
IV	Achievement greater than plan.				
III	Plan was achieved.	X	X	X	X
II	Plan was not achieved sufficiently.				
I	Plan was not achieved.				

➤ Evaluation of current situation

(MU)

Communication between MU and TMDU via online conferencing is proceeding satisfactorily. We constantly share information regarding the program and have responded swiftly to problems that emerged. Additionally, three of the committee members, Prof. Thawatchai, Prof. Vitoon, and Dr. Asada visited TMDU on December 8, 2023, to hold more in-depth discussions regarding the program. In addition, these members met President Tanaka to invite the graduation ceremony in Mahidol University on Autumn of 2024.

(TMDU)

The Joint Implementation Structure and Communication methods are working effectively using teleconference systems (ZOOM).

A regular committee meeting is held every month for curriculum management. Information and views are exchanged frequently via e-mail, as necessary. In addition, we conducted interviews with students to monitor the status of their research projects and credit acquisition.

We conducted a Dean meeting in the last month of the academic year to confirm progress on this program, admission process for new students, and credit acquisition status.

Additionally, one of the committee members, Keiichi Akita, visited Siriraj Hospital on June 23, 2023, and on January 19, 2024, to hold more in-depth discussions regarding the program.

➤ **Proposals for improvement**

(MU)

No improvement is required.

(TMDU)

Currently, no improvement is under consideration in TMDU.

1-2. Policies

1-2-1. Diploma Policy

[Evaluation indicator]

Diploma Policy is set and published based on the educational objectives, and completion of the program is approved in a fair and strict manner.

[Plan]

According to the following Human Resources Development Goals of the Program, TMDU and MU will make a diploma policy and confer the degree of Doctor of Philosophy in Medical Sciences on students.

【Human Resources Development Goals】

This program is designed to foster advanced medical personnel involved in the treatment of diseases in a super aging society, especially multidisciplinary treatment such as cancer treatment.

- (1) Surgeons who can advance the field of cancer treatments;
- (2) Skilled medical research scientists who can promptly respond to the needs of society; and
- (3) Leaders who can advance the medical sciences and healthcare fields in Japan, Thailand and throughout the ASEAN region.

[Current situation]

The following Diploma Policy, based on the Human Resources Development Goals of this Program, has been jointly established by TMDU and MU by mutual consent.

【Diploma Policy】

The Program confers the degree of Doctor of Philosophy on students who attain the required credits, pass the dissertation defense and final examinations and can do all of the following.

- 1) Ability to acquire advanced specialized knowledge, technique, applied skills in the field of surgery and to independently carry out pioneering research activities.
- 2) Ability to accurately summarize, widely explain and disseminate research results in the fields of surgery and biomedical sciences related to surgery.
- 3) Ability to identify international issues related to surgical medicine and solve problems from an international perspective; and the capacity to play a leading role in the field of education and research.

MU Faculty members have explained the Diploma Policy to new students in the university guidance. The policy can also be viewed on the websites of both universities.

For this year, in accordance with the Diploma Policy, TMDU and MU have conferred a doctoral degree on three students who matriculated in 2020 as the first students of this JDP.

1-2-2. Curriculum Policy

[Evaluation indicator]

- Curriculum Policy is clearly indicated and published based on the educational objectives.
- Academic curricula are organized and implemented based on Curriculum Policy.

[Plan]

TMDU and MU will draw up a Curriculum Policy and put together a curriculum for acquiring the essential knowledge, skills, experience and leadership needed for the degree and to become highly specialized medical professionals.

[Current situation]

The following Curriculum Policy has been established with the mutual consent of TMDU and MU. TMDU and MU added (6) and (7) in 2021.

【Curriculum Policy】

The curriculum has been designed based on the following policies in order to create an environment in which students can acquire the knowledge, skills, experience and leadership abilities necessary to obtain a degree and become a highly specialized medical professional.

- (1) Establish “Clinical Core Subject I” to enable students to acquire advanced skills in specialized fields through specific research themes in clinical surgery. Establish jointly designed “Clinical Core Subject II” to enable students to acquire a wide range of knowledge, analytical abilities, and basic/applied skills in surgery and in biomedical sciences related to surgery, as well as developing an international perspective.
- (2) Establish “Clinical Statistics and Biomedical informatics” to enable students to acquire the basic knowledge of statistics and epidemiology necessary to conduct international-level research.
- (3) Establish “Cancer Professional Training Subjects” to enable students to acquire comprehensive knowledge and skills related to cancer and methodologies for conducting clinical research, which are required of leaders in cancer treatment.
- (4) Establish “Research core subjects” to enable students to cultivate the knowledge and research skills necessary to explore research themes in their surgical specialty, and acquire the knowledge and analytical skills necessary for basic research related to those themes.
- (5) Establish “Experiments and Thesis Writing” under the guidance of both universities to enable students to write original and practical papers based on scientific evidence through independent research on specific research topics related to surgical specialties.
- (6) Evaluate student academic performance based on formative and summative criteria, as described in the syllabus, in order to achieve educational goals.
- (7) Evaluate thesis/dissertation strictly based on diploma policy, and conduct thesis/dissertation defense and final examination appropriately.

Academic curricula are organized and implemented based on the Curriculum Policy. The table 2 shows the list of subjects reflecting each item of the policy. The Curriculum Policy is viewed on both universities' websites.

Three courses: Gynecologic Cancer Therapy, Gynecologic Oncology (TMDU), and Gynecologic Oncology (MU) were added for students specializing in gynecologic oncology.

(Table 2)

Field	Subject	Credits (TMDU)	Credits (MU)
Clinical Core Subjects	• Clinical Core Subject I (TMDU)	2	2
	• Clinical Core Subject I (MU)		
	• Clinical Core Subject II	5	
Clinical Statistics and Biomedical informatics	• Overview of Public Health Medicine in Disease Prevention	2	2
	• Epidemiology	2	
	• Clinical Biostatistics and Statistical Genetics	2	
	• Research methodology in Biomedicine		
	• Biostatistics in Biomedicine		
Cancer Professional Training Subjects	• Overview of Cancer: Cancer Biology, Pathology and Anatomy	1	1
	• Minimal Invasive Treatment for Cancer I	1	
	• Minimal Invasive Treatment for Cancer II	1	
	• Organ-specialized Cancer	1	
	• Pediatric and rare cancers	1	
	• Advanced Clinical Oncology	1	
	• Cancer genomics and precision medicine	1	
	• Palliative Medicine: Outline	1	
	• Applied Cancer Biology and Immunology		
	• Stem cell for Surgical Patient		
	• Basic Laboratory Relevance to Surgery		
	• Cancer Imaging		
	• Robotic Surgery in Urology		

	• Basic Surgical Endoscopy		1
	• Advanced Inter Disciplinary Endoscopy for Gastrointestinal Tract Cancer		1
	• Perioperative Care Surgical Patient		1
	• Gynecologic Cancer Therapy		1

Research core subjects	Surgery	• Specialized Surgeries	4	
		• Gastrointestinal Surgery	4	
		• Hepatobiliary Pancreatic Surgery (TMDU)	4	
		• Head and Neck Surgery	4	
		• Urology (TMDU)	4	
		• Gynecologic Oncology (TMDU)	4	
		• Surgery for Upper GI Cancer		4
		• Surgery for Lower GI Cancer		4
		• Hepatobiliary Pancreatic Surgery (MU)		4
		• Vascular Surgery		4
		• Multidisciplinary Approach to Disease of Head Neck and Breast		4
		• Urology		4
		• Gynecologic Oncology (MU)		4
	Biomedical sciences related to Surgery	• Stem Cell Regulation	4	
		• Clinical Anatomy	4	
		• Developmental and Regenerative Biology	4	
		• Biomechanics	4	
		• Clinical Oncology	4	
		• Principles in Systems Pharmacology		4
		• Stem Cell Science		4
Experiments and Thesis Writing	• Experiments and Thesis writing at TMDU	24		
	• Experiments and Thesis writing at MU		24	

1-2-3. Admission Policy

[Evaluation indicator]

Clear Admission Policy is established and entrance examination is conducted in accordance with it.

[Plan]

In accordance with the Human Resources Development Goals of the Program (Refer to the item, 1-2-1), TMDU and MU will draw up an Admission Policy and conduct entrance examinations in accordance with it.

[Current situation]

TMDU and MU have drawn up the following Admission Policy by mutual consent. Both added the 《Basic Entrance Examination Policies》 in 2021.

【Admission Policy】

《What We Expect of Our Students》

This program aims to foster highly skilled experts as well as global leaders who possess a wealth of knowledge in the fields of biomedical and medical sciences, especially in surgery, not only in Japan and Thailand, but also throughout Southeast Asia. Qualified applicants who meet any of the following criteria are therefore highly encouraged to apply for our program.

- 1) Eager to acquire advanced clinical ability, basic knowledge and techniques in the field of surgery, or understanding grounded in the latest research in the field of surgery.
- 2) Eager to be independent basic-clinical researchers in the fields of surgery with the capacity to take the lead in national/international clinical research projects or clinical education upon completion of this course.

《Basic Entrance Examination Policies》

Applicants are evaluated in a comprehensive manner through an oral examination and application document to assess ability to carry out scholarship and research in this program, aptitude and motivation.

The policy and details of the entrance examination are clearly explained in the Student Application Guide and on the websites of both universities. The entrance examination and curriculum are conducted rigorously, consistent with

policies.

The entrance examination includes screening of documents and a joint interview (English). The 2023 entrance examination was conducted in March, in accordance with the Admission Policy, and two candidates qualified and were accepted.

[Evaluation of 1-2. Policies]

		2020	2021	2022	2023
IV	Achievement greater than plan.				
III	Plan was achieved.	X	X	X	X
II	Plan was not achieved sufficiently.				
I	Plan was not achieved.				

➤ Evaluation of current situation

(MU)

1. All three students who enrolled in 2020 have successfully passed the dissertation and graduated Ph.D.
2. All eleven students who are currently enrolled (for 2020-2023) have successfully completed the first, second, and third years as per the prescribed curriculum. The course is progressing per schedule and without any problems.
3. The three of 2020 students visited Tokyo Medical and Dental University as clinical attendants
4. The three new students for 2024 are starting their course subjects under the supervision of both MU and TMDU faculty.

(TMDU)

The Diploma Policy, Curriculum Policy, and Admission Policy are published in the admission guidelines and on the JDP website. The TMDU website was revamped. Students have joined this course in agreement with these policies. Students are progressing in their courses as per the curriculum. The first three students have graduated and will be awarded their degrees. Based on discussions between the two universities, it was decided that courses in the fields of obstetrics and gynecology will also be offered from 2024. This will enable us to accept more students.

➤ Proposals for improvement

(MU)

No proposal is required.

(TMDU)

No proposal is required.

1-3. Quality Assurance System

1-3-1. Self-assessment

[Evaluation indicator]

Self-assessment is implemented and the results are published and reflected in educational and research activities.

[Plan]

TMDU and MU will evaluate the educational and research activities of the Program, and write a self-assessment report each fiscal year.

[Current situation]

The Program Administrative Committee implemented the self-assessment of this program in October 2023. Both TMDU and MU wrote a self-assessment report based on the same evaluation categories and reviewed the current situation and proposals for improvement.

The evaluation period was from April 2022 to March 2023.

Self-assessment reports were published on the websites of both universities. Based on the reports of the Program Administrative Committee, which was held in October 2023, TMDU and MU discussed a strategy for educational improvement and research activities.

1-3-2. External assessment

[Evaluation indicator]

External assessment is implemented and the results are published and reflected in the educational and research activities.

[Plan]

TMDU and MU will undergo external evaluation by the External Assessment Committee based on the self-assessment report. External evaluators will consist of outsourcing veterans and professors from other universities in Japan and Thailand, which have doctoral programs in the medical or life science field, and experience of granting doctoral degrees.

[Current situation]

In March of 2022, TMDU and MU undertook an external assessment. The results of the external assessment were provided as feedback to the faculty members of both universities. Based on the results and feedback, TMDU and MU considered expanding the program and improving their educational and research activities. The next external assessment will be conducted in March 2025, for the assessment of the academic year when the first students complete.

1-3-3. Feedback of assessment results

[Evaluation indicator]

- Opinions of university members (students and faculty members) are heard and utilized properly in concrete, sustainable improvement of educational quality.
- Opinions of external parties are utilized properly for concrete, sustainable improvement of educational quality.
- Faculty Development is properly managed, and leads to improvement of educational quality and coursework.

[Plan]

In this Program, we will ask students to complete questionnaires on the subjects. Also, supervisors will hear students' opinions via the video conferencing system. The results and opinions will be fed back to faculty members, and utilized for improvement of educational quality. They will also be reflected in curricula, the method of supervision and entrance examination.

With a view to developing faculty members' teaching skills, we plan to conduct a faculty development workshop to share relevant information such as on curriculum planning and making teaching materials.

[Current situation]

TMDU and MU administered the questionnaire to students on the subjects they took in the first and second academic years. The results were shared and examined at a meeting convened by the Program Administrative Committee, and most students were satisfied. Furthermore, we conducted a video workshop on faculty development jointly with Chulalongkorn University and University of Chile, as they also manage Joint Degree Programs with TMDU. Specifically, we shared information related to Artificial Intelligence.

1-3-4. Information publication

[Evaluation indicator]

Information such as that on educational activities (including the items defined by paragraph 2, Article 172 of the Enforcement Regulations of the School Education Law, MEXT) are publicized.

[Plan]

There is a public relations section at TMDU, which plans publicity, and issues an overview of TMDU and a PR brochure. They will provide information on the industry-academia-government collaborations, educational and research activities and social contribution activities of TMDU. MU will also be proactive in providing information.

[Current situation]

Mutual cooperation between TMDU and MU has enabled to make information available on educational and research activities on the websites of both universities. In fact, MU and TMDU has revamped its website completely (Reference 1 and 2).

<https://www.tmd.ac.jp/cmn/jdp/>

<https://sites.google.com/mahidol.edu/jdphd-surgery?usp=sharing>

Information publishing at MU: The JDP Program continues to be adequately described on the web page of International Affairs in Siriraj Hospital (Reference 3):

<https://www2.si.mahidol.ac.th/en/surgery/joint-degree-program/>

The JDP team manages the JDP website, which provides information on the various educational and research activities, as listed below in Table 3.

Moreover, newsletters have been regularly published to create public awareness on the current status of the JD program's operations (Reference 4).

Reference 1: TMDU Website (English and Japanese)

Reference 2: MU website (English and Thai)

Reference 3: Web page of International Affairs in Siriraj Hospital

(Table 3)

<Information on educational and research activities provided on JDP website>

- University's educational objectives
- Basic organization for education and research
- Faculty member information

-	Number of admissions, admission quota, number of students enrolled
-	Subjects' details, teaching methods, curriculum
-	Facilities, research environment
-	Tuition fees, admission fees

Reference 4: Newsletter

[Evaluation of 1-3. Quality assurance system]

		2020	2021	2022	2023
IV	Achievement greater than plan.				
III	Plan was achieved.	X	X	X	X
II	Plan was not achieved sufficiently.				
I	Plan was not achieved.				

➤ Evaluation of current situation

(MU)

Students enrolled in the JDP program evaluated each course subject through a MU-designed evaluation form. We have received feedback and comments, then the information has been discussed in the program administrative committee to improve every aspect of the curriculum.

(TMDU)

This program has a quality assurance system comprising self-assessment and external assessment. We conducted the on-demand faculty development program together with other JDP programs supervised by TMDU. We used a questionnaire to sample students' opinions about improving the program, and MU and TMDU shared the results. In addition, inputs from student interviews were used to fully accommodate students' wishes regarding their studies. These wishes were also shared with the committee members at the meeting.

➤ Proposals for improvement

(MU)

Mahidol University (MU) has improved and the updated current status and news on the faculty website and webpage of the Department of Surgery. The updates include student activities, pictures, and videos along with other important announcements. Moreover, MU plans to distribute the JDP brochure at a national surgery conference.

(TMDU)

Both MU and TMDU used a self-assessment questionnaire to improve the quality of the assessment. We discussed the results of the questionnaires in the committee meeting to improve this program. The committee is making all efforts to ensure that students in this program can choose subjects of their preference, such as by asking the course directors to offer students more choices in the courses.

2. Operation of the JD Program

2-1. Progress of the JD Program operation

[Evaluation indicator]

Program operation is properly conducted as planned.

[Plan]

TMDU and MU will jointly conduct entrance examinations. After successful applicants have matriculated for the program, both universities will give the students appropriate guidance, confirm the completion of course registration, and assign supervisors and research supervisors to students. At the end of each academic year, credits will be recognized for subjects after receiving approval from the Program Administrative Committee. In the 2nd academic year, students will take the Dissertation Proposal Defense, and their supervisors will advise them on their research projects.

[Current situation]

Entrance examinations were conducted jointly, and two students were enrolled for the program in 2023. MU faculty members provided guidance, explaining the procedures for course registration.

Supervisors and research supervisors from TMDU and MU were assigned to students; they advised and supervised students regarding their subjects and research plans via e-mail and video conferencing systems. The students took subjects at TMDU and MU during their first and second years and completed the required subjects.

As steps to the conferring diploma, students present their research plan at Students Meeting in the first year and Dissertation Proposal Defense in the second year, and research supervisors give them advice on their research progress.

All students have acquired credits for the compulsory subjects so far. This year, three students who matriculated in 2020 have eventually passed the dissertation defense and completed this JD program.

Two fourth-year students who arrived in Japan in October 2022 completed their studies at TMDU. One student returned to Thailand in September 2023. Another student returned in March 2024, even though their arrival was delayed than planned because of the COVID-19 pandemic. The other fourth-year student started his studies at TMDU in April 2023 and returned to Thailand in September 2023.

➤ Scholarships

TMDU successfully applied for JASSO (Japan Student Services Organization) scholarships and one student who met the requirements received the scholarship from April 2023 to September 2023. The other student studying at TMDU for over one year received a scholarship from TMDU fund from September 2023 to March 2024.

➤ Housing

TMDU prepared rooms at TMDU Ichikawa Dormitory and one student used it. TMDU administrative staff and the coordinator helped the student to complete the moving-in procedure and gave them a tour of the dormitory.

➤ Others

TMDU staff supported students by helping them with resident registration, opening bank accounts, and signing up for health insurance.

[Evaluation of 2-1. Progress of the JD Program operation]

		2020	2021	2022	2023
IV	Achievement greater than plan.				
III	Plan was achieved.	X	X	X	X
II	Plan was not achieved sufficiently.				
I	Plan was not achieved.				

➤ Evaluation of current situation

(MU)

1. Candidates who applied for the Joint Degree Program in the 1st semester of 2nd year were interviewed by interviewers (MU-TMDU committees) and provided evaluation scores.
2. For JDP students who enrolled in 2022 and 2023, the Qualifying Examination and Dissertation proposal examination were conducted after students pass all coursework.

(TMDU)

The JDP committees of both MU and TMDU have been operating the program satisfactorily, including the entrance examinations, the guidance of course structure, and the supervision of their research plans. The situation of students' acceptance from MU to TMDU has also been favorable.

➤ Proposals for improvement

(MU)

No proposal is required.

(TMDU)

No specific proposals need to be implemented.

2-2. Fulfillment of student capacity

[Evaluation indicator]

- Admission policy, Curriculum policy and Diploma policy are properly publicized and disseminated.
- Number of admissions versus admissions quota is appropriate.

[Plan]

- Information such as on awarded degree, requirements for completion, curriculum, academic calendar, fees, hours per credit, scholarships and student welfare and student support will be given in the admission guide and on websites.
- The admission quota for this program is three, and it is expected that 1~2 Japanese and Thai candidates will apply.

[Current situation]

Both universities publish relevant information, such as communications related to Diploma Policy, Curriculum Policy and Admission Policy on their websites. All the necessary information given below is available in the application guide and on the websites of both universities (Reference 1).

- Awarded diploma
- Completion requirements
- Educational content and teaching methods
- Academic calendar
- Tuition fees
- Student support (scholarships)

The schedule for the application and the entrance examination date was extended since the number of applicants was insufficient.

As a result, 3 Thai candidates have applied, and the number of admissions versus admissions quota is appropriate (Table 4).

(Table 4)

	2020	2021	2022	2023	2024
Admissions quota	3	3	3	3	3
Number of applicants	3	5	3	2	3
Number of successful applicant	3	3	3	2	3
Number of enrollments	3	3	3	2	3

[Evaluation of 2-2. Fulfillment of student enrollment capacity]

		2020	2021	2022	2023
IV	Achievement greater than plan.				
III	Plan was achieved.	X	X	X	X
II	Plan was not achieved sufficiently.				
I	Plan was not achieved.				

➤ Evaluation of current situation

(MU)

1. All three students enrolled in 2020 have successfully passed dissertation and graduated Ph.D.
2. The third generation students (2022) come not only from the surgery department, but also the ENT department. All of them aim to conduct research on cancer.
3. The course curriculum is in the field of research and surgery. Students can register in all the subjects they are interested in, whether MU or TMDU, if these subjects conform to the curriculum structure.
4. The curriculum is expanding to the Department of Gynecology surgery.

(TMDU)

Enrollments are successfully filled to the capacity number. It means the recruitment activities of both universities are functioning well and their efforts are satisfactory.

➤ Proposals for improvement

(MU)

Expansion of the field of study may be required in the future.

(TMDU)

No specific proposals need to be implemented.

2-3. Syllabuses

[Evaluation indicator]

Appropriate syllabuses are prepared and operated.

[Plan]

Syllabuses, which include important information such as assessment standards, will be publicized on websites. They will be written in English.

[Current situation]

The syllabus of TMDU is written in English and that of MU is written in Thai or English. The syllabus includes the Curriculum Policy, and it is available on the respective websites.

[Evaluation of 2-3. Syllabuses]

		2020	2021	2022	2023
IV	Achievement greater than plan.				
III	Plan was achieved.	X	X	X	X
II	Plan was not achieved sufficiently.				
I	Plan was not achieved.				

➤ Evaluation of current situation

(MU)

1. The syllabus of each subject in the JD Program has been revised and updated for the new semesters.
2. The syllabus will be posted on the Graduate School website, the Faculty of Medicine Siriraj Hospital website, and the Department of Surgery website.

(TMDU)

The syllabus includes important points regarding the course structure, such as assessment standards, appropriateness, and ease of comprehension. Written in English and uploaded on the website, the syllabus is easily accessible by JDP students or applicants.

➤ Proposals for improvement

(MU)

New platforms for online courses are now under development at MU.

(TMDU)

No specific proposals are required to be implemented.

2-4. Evaluation method and criteria

(Grading, Recognizing credits and Completion of course)

[Evaluation indicator]

Evaluation methods and criteria (grading, recognition of credits, and completion of course) for each subject are established, applied properly in a fair manner, and disclosed to students.

[Plan]

- Credit recognition will be examined and approved upon deliberation by both universities' faculty members in the Program Administrative Committee.
The performance of each student in courses at TMDU will be graded on a 6-point scale, as follows, to enable each student's level of achievement to be visualized.
A+=4.0, A=3.5, B=3.0, C=2.0, which means pass,
D=1.0, F=0, which means fail.
This is based on paragraph 19 of the TMDU Graduate School Regulations.
The performance of each student in courses at MU will be graded on a 8-point scale, as follows, to enable each student's level of achievement to be visualized.
A=4.0, B+=3.5, B=3.0, C+=2.5, C=2.0, which means pass,
D+=1.5, D=1.0, F=0, which means fail. Both universities will record students' performances after converting their grades using the conversion table.
- Standards for the grades of each university will be written in syllabuses, and also posted on the universities' websites.

[Current situation]

The university assigns grades for each subject, and the grades are approved by the Program Administrative Committee, which is jointly operated by TMDU and MU. For academic records at TMDU and MU, a grade conversion table (Table 5) has been designed to convert respective evaluations for subjects. Table 6 has been added from the 2023 academic year onward and the performance of each student for the subjects evaluated as S (Satisfactory), U (Unsatisfactory), and P (in Progress) shall be calculated based on the criteria in Table 6.

(Table 5) (*For students matriculated before the 2023 academic year)

TMDU		MU		Standards for Specific Behavioral Objectives (SBOs)
GP	Grade	GP	Grade	
4.0	A+ (Superior)	4.0	A (Excellent)	All SBOs were achieved beyond expectation.
		3.5	B+ (Very Good)	
3.5	A (Excellent)	3.0	B (Good)	All SBOs were achieved.
3.0	B (Good)	2.5	C+ (Fairly Good)	Most SBOs were achieved.
2.0	C (Fair)	2.0	C (Fair)	The minimum SBOs necessary were achieved.
1.0	D (Failing)	1.5	D+ (Poor)	The minimum SBOs necessary were not achieved.
		1.0	D (Very Poor)	
0.0	F (Failing)	0	F (Failing)	Unable to evaluate based on insufficient SBOs.

(Table 6)

Tokyo Medical and Dental University			Mahidol University		
GP	Grade		GP	Grade	
	S	Satisfactory		S	Satisfactory
	U	Unsatisfactory		U	Unsatisfactory
				P	in Progress

Owing to changes in the grading system with the merger between TMDU and Tokyo Institute of Technology, the grade conversion table of JDP for students who matriculated after 2024 was changed as Table 7 from Table 5. However, Table 5 still applies to students matriculated before 2023 and Table 6 applies to all the students regardless of the year of admission.

(Table 7)

After April 2024 (*For students matriculated after the 2024 academic year)

TMDU		MU		Standards for Specific Behavioral Objectives (SBOs)
GP	Score	GP	Grade	
3.5-4.5	90-100	4.0	A(Excellent)	All SBOs were achieved beyond expectation.
		3.5	B+(Very Good)	
2.5-3.4	80-89	3.0	B(Good)	All SBOs were achieved.
1.5-2.4	70-79	2.5	C+(Fairly Good)	Most SBOs were achieved.
0.5-1.4	60-69	2.0	C(Fair)	The minimum SBOs necessary were achieved.
0.0	0-59	1.5	D+(Poor)	The minimum SBOs necessary were not achieved.
		1.0	D(Very Poor)	
		0	F(Failing)	Unable to evaluate based on insufficient SBOs.

[Evaluation of 2-4. Evaluation method and criteria (Grading, Recognizing credits and Completion of the course)]

		2020	2021	2022	2023
IV	Achievement greater than plan.				
III	Plan was achieved.	X	X	X	X
II	Plan was not achieved sufficiently.				
I	Plan was not achieved.				

➤ Evaluation of current situation

(MU)

- Each subject will be evaluated based on student punctuality and in class activities during every class.
- The examination system (multiple-choice questions (MCQs) and oral examination) will be used in conjunction with the standard scoring system.

(TMDU)

Evaluation methods have been developed and agreed upon in accordance with the requirements of both universities.

➤ Proposals for improvement

(MU)

The present grading system follows the Graduate School grading system.
No need to propose improvement.

(TMDU)

No specific proposals need to be implemented.

3. Student Support

3-1. Student support system

3-1-1. Accommodation

[Evaluation indicator]

Appropriate housing support for students is ensured.

[Plan]

TMDU and MU will provide dormitories for the accommodation of students.

[Current situation]

TMDU offers rooms in the TMDU Ichikawa Dormitory to students while they conduct research or clinical activities in TMDU. One of the three students who came to Japan used the dormitory. The administrative staff of both TMDU and MU provide the necessary support for students to begin their new lives in Japan. The support includes helping students with the procedures in the city hall, opening a bank account, taking out insurance, and providing them with necessary information regarding transportation, mobile phones, and so on.

3-1-2. Research environment

[Evaluation indicator]

Educational environment that will provide education according to instruction goals is in place.

[Plan]

- One or two research supervisors from TMDU and MU will be assigned for each student before starting courses so that the student can receive research guidance from both universities.
- Both universities will make their facilities available - such as those at the Yushima campus of TMDU and campus of MU's Faculty of Medicine Siriraj Hospital. Thus, the necessary environment for graduate education and research for JDP will be put in place so that a multifaceted approach to student education and research is possible

[Current situation]

Students' research work has progressed efficiently as each student was assigned two research supervisors from both universities. The students meet TMDU and MU research supervisors to report and confirm their research plans and both research supervisors comment on the progress made in their work and provide appropriate advice. The students also send the research progress via MU system to obtain approval or advice from both research supervisors.

3-1-3. Financial support

[Evaluation indicator]

Ensure adequate financial support for students.

[Plan]

MU will provide scholarships to two or more students who register at MU each year, on the condition that after completing the program they join as faculty members in the Department of Medicine at Siriraj Hospital.

[Current situation]

Before students, who matriculated at MU, start their clinical and research activities, TMDU applied for JASSO scholarships (80,000JPY/month) for them.

Both TMDU and MU continue to look for additional financial support for students who meet the requirements for receiving private scholarships and university funds.

[Evaluation of 3-1. Student support system]

		2020	2021	2022	2023
IV	Achievement greater than plan.				
III	Plan was achieved.	X	X	X	X
II	Plan was not achieved sufficiently.				
I	Plan was not achieved.				

➤ Evaluation of current situation

(MU)

All JDP students were awarded scholarships for four-year studies. This scholarship will cover both tuition and travel expenses to Japan for the duration of their stay in Japan.

(TMDU)

During their stay, students' accommodation needs are met. They can live

on-campus in either Surugadai or Konodai. They can apply for the Japan Student Services Organization (JASSO) scholarship. Students can use the TMDU office during their stay in Japan. Additionally, for the successful completion of their research, support for research expenses during the students' stay in Japan is allocated to the respective laboratories to which the students belong.

➤ Proposals for improvement

(MU)

In the future, scholarships from other sources, such as scholarships from the Japanese government and other public or private organizations, may be required.

(TMDU)

We will continue to provide more support to students in response to their comments.

Connect the world through medicine and dentistry

Gain access to research, clinical studies, and colleagues from around the world!

「世界をつなぐ、医歯学でつなぐ」

研究も 臨床も (そして) 世界の仲間も

MAHIDOL UNIVERSITY

News

2021.4.1.

New JDP website!

JDPのHPがリニューアルしました！

VIEW MORE



Why JDP ?

A single academic degree jointly conferred on students who have completed a single joint educational program established by universities that jointly set up the said program.

ジョイント・ディグリー（JD）とは、連携する大学間で開設された単一の共同の教育プログラムを学生が修了した際に、当該連携する複数の大学が共同で単一の学位を授与するものです。

VIEW MORE

Joint Degree Programs in TMDU



Tokyo Medical and Dental University and Chulalongkorn University
International Joint Degree Doctor of Philosophy Program in Orthodontics
国際連携歯学系専攻

TMDU×Chulalongkorn University
TMDU×チュロンコン大学



University of Chile and TMDU Joint Degree Doctoral Program in Medical Sciences with mention of a medical specialty
国際連携医学系専攻

TMDU×University of Chile
TMDU×チリ大学



Joint Degree Doctoral Program in Medical Sciences between Tokyo Medical and Dental University and Mahidol University
国際連携医学系専攻

TMDU×Mahidol University
TMDU×マヒドン大学

Director's Message



Director, Institute of Global Affairs
東京医科歯科大学 統合国際機構長

Tomohiro Morio
森尾 友宏



Division Head,
JDP Advancement Division
JDP推進部門長
Acting Director, Institute of Global Affairs
統合国際副機構長

Keiichi Akita
秋田 恵一

VIEW MORE

Voices

Messages from students, OB/OG, faculty member

学生やOB/OG、教員のメッセージを、動画やインタビュー記事で紹介します。

VIEW MORE





JD-PhD Admission 2025.

Welcome to Faculty of Medicine Siriraj Hospital's online application system

[Sign up](#)

First Ph.D. Course in Clinical Medicine in Thailand.

This program aims to develop PhD graduate who are capable of designing innovation or conducting research for improving quality of patient care. PhD graduate have research skill, are able to continuously instigate their specialized discipline with the other related discipline and have academic morality and ethics.



Spotlight

Faculty Development Seminar AY2023

March, 2024

Mahidol University, University of Chile, Chulalongkorn University and Tokyo Medical and Dental University present



Mahidol University, University of Chile, Chulalongkorn University, and TMDU
Joint Degree Doctoral Program in Medical and Dental Sciences

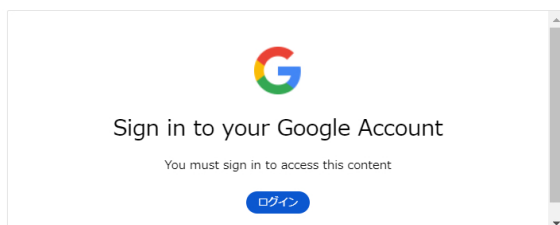
Faculty Development Seminar AY2023

For all employees and students
March, 2024

Mahidol University, University of Chile, Chulalongkorn University, and TMDU present

	Disruptive medical technology Dr. Jirawat Swangsi -Minimally invasive surgery unit, Department of Surgery, Faculty of Medicine Siriraj Hospital, Mahidol University -M.D., Ph.D., Assistant professor
	The Human Brain and Artificial Intelligence: Similarities and challenges Dr. Pedro Maldonado -Department of Neuroscience, Faculty of Medicine, University of Chile -B.S., M.S., Ph.D., Professor
	Introduction to AI and its application in healthcare and dentistry Dr. Pimane Teakamorn -Sasin School of Management, Chulalongkorn University -B.S., M.S., Ph.D., Lecturer and AI Strategist
	Toward Ultra-fast Drug Discovery for Hundreds of Pathogens Dr. Hiroyuki SHIMIZU -Department of AI Systems Medicine, IMB2 Data Science Center, Tokyo Medical and Dental University (TMDU) -M.D., Ph.D., Professor

Inquiry: JD&MPH unit: jd@ml.tmd.ac.jp



Coming Up Events

News



1st Ph.D. Graduation at TMDU, Japan
March 15th, 2024

[more news](#)



Annual Meeting with TMDU
January 19th, 2024

Program Administrative Committee



Associate Professor
Vitoon Chinswangwatakul, M.D. Ph.D.
Program Director



Clinical Professor
Asada Methasate, M.D. Ph.D.
Associate Director



Associate Professor
Nuttawut Sermathanasawadi, M.D. Ph.D.
Program Secretary



Tanakorn Tarapongpun M.D.

Meet Our Students

[Visit Page](#)

Where to find us

Address:

Department of Surgery 13th Floor, Syamindra Building Faculty of
Medicine Siriraj Hospital, Mahidol University
Bangkok,Thailand 10700

Telephone:

(+66) 2419-4942
(+66) 2419-3847

Email:

mutmdujoint@mahidol.ac.th



COPYRIGHT ©2023, Ph.D. IN MEDICAL SCIENCE





Faculty of Medicine
Siriraj Hospital
Mahidol University
Est.1888



Joint Degree Doctoral Program

**First Ph.D. Course in Clinical Medicine in
Thailand!**

Student Recruitment Guideline & Curriculum

หลักสูตรปรัชญาดุษฎีบัณฑิต สาขาวิทยาศาสตร์การแพทย์ (หลักสูตรนานาชาติ)

Doctor of Philosophy in Medical Sciences (International Program)

**Joint Degree Doctoral Program in Medical Sciences between Tokyo Medical and Dental University
and Mahidol University**



Field of study: Medical Science, Surgery

Recruitment: Both Thai and international graduated medical doctors

Terms of study: 4 years **Venue for Instruction:** Thailand and Japan

Class language: English

Completion requirements: 72 credits or more, Dissertation

Establishment: the Year 2019

Application Apply: October 1, 2020 – December 11, 2020 (Semester 1 / 2021)

Student Recruitment Guideline, please click >>[Here](#)<<

For further information, please visit >> <http://graduate.mahidol.ac.th/inter/prospective-students/?p=curriculum&id=2046D01G>

or contact Department of Surgery's International Relation Office, 13th Floor, Syamindra Building,
Faculty of Medicine Siriraj Hospital, Mahidol University, Bangkok, Thailand 10700

e-mail : Ussanee.cha@mahidol.ac.th **Tel:** (+66) 419-8013 ext. 105

Share this:

Tweet

Main Menu

- > Home
- > About
- > Division
- > Education
- > Gallery

> Publication

*Reference 03

> Staff

> Contact

Menu

SIRIRAJ

Students

Undergraduate

Postgraduate

Alumni

SIRIRAJ Alumni

Staff

Resources

Training

Benefits

Jobs

Visitors

Visit us



Faculty of Medicine Siriraj Hospital Mahidol University

Newsletter

Vol. 20



チュラロンコン大学 - 東京医科歯科大学



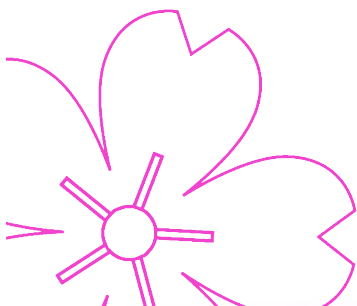
研究教育協力センター

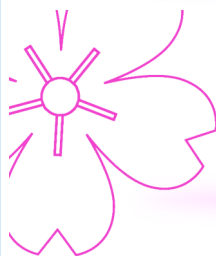
CU-TMDU Research and Education Collaboration Center, Thailand

April 28th, 2023

目次:

- ① チュラロンコン大学・マヒドン大学訪問報告 ————— 1
- ② チュラJDP M2017生 学位記授与&M2020生 論文企画試験 — 2
- ③ チュラJDP M2021生 学生の来日 ————— 2
- ④ マヒドンJDP 一期生の来日 ————— 3
- ⑤ マヒドンJDP 2年次論文企画審査 ——— 4
- ⑥ マヒドンJDP 1年次学生面談 ————— 5





①チュラロンコン大学・マヒドン大学 訪問報告

新型コロナウィルス感染症の感染状況も落ち着きを見せ始めた2023年1月、チュラロンコン大学での業務のため、バンコク出張をしました。久しぶりに降り立ったスワンナプーム国際空港は人影も薄いものでしたが、旧正月の時期のためか中国系の観光客を多く見かけました。ARL・BTSでサイアムスクエアに到着すると、旧正月を祝うイベントをマスク着用で楽しむ人々で賑わい、新型コロナウイルス感染症と日常生活の折り合いをうまくつけながら過ごしている様子でした。そして、ポストコロナの生活を創り上げる活気に満ちた街の雰囲気は、久しぶりの海外出張への不安を払拭してくれるものでした。2010年開所のチュラロンコン大学—東京医科歯科大学研究協力センターは1ヶ月の長期出張時にも利用した施設であります。コロナ禍でも頻繁に活用されており、両校にとどまらず、タイ・日本の研究協力の発展に大きな役割を果たしているものと思います。センター管理に携わるAssoc. Prof. Atiphan Pimkhaokhamと大学敷地内を歩いていると、20数年前、チュラロンコン大学歯学部と本学歯学部の学生交流を始める際に大変お世話になったAssoc. Prof. Somsri Rojanawatsirivejが偶然に声をかけてくださり、教員としての今の生活をご報告することもできました。オンライン交流も新しいツールではありますが、偶然に価値を見出せる人と人の直接の交流あってこそその国際交流の温かさ、その必要性を感じた瞬間でもありました。■

✧ 歯学教育システム評価学分野 分野長 鶴田 潤 准教授



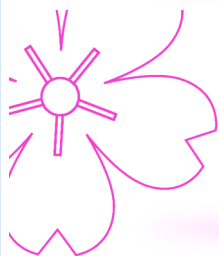
病院1号棟の前で、左から：Atiphan 准教授、
Somsinee助教、Somsri 准教授、鶴田 准教授



Chinese New Yearの
夜のキャンパス・新歯学
部病院の風景



CU-TMDU research and education collaboration centerでの
Atiphan Pimkhaokham 准教授



② チュラJDP M2017生 学位記授与 & M2020生 論文企画試験

昨年度に引き続き、第二期生のタイ人学生3名が、2022年7月にチュラJDPを修了しました。コロナ禍においても、Zoom等を用いて論文指導を行い、二期生全員が無事修了する運びとなりました。タイでもコロナは落ち着いてきているようで、2022年11月には二期生の学位記授与式も盛大に執り行われたようです。

2022年11月には、第五期生の論文企画試験も行われ、3名全員が合格しました。今後もチュラJDPを通じて、国際的にリーダーシップを発揮できる高度専門医療人の育成に励みます。■

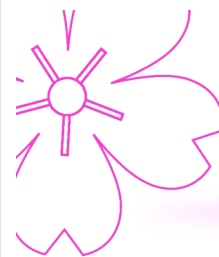
＊統合国際機構 国際交流課 JD・MPH係



修了生3名



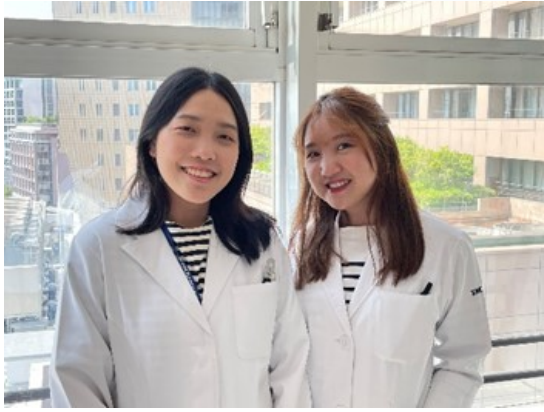
チュラJDP学生及び関連教員



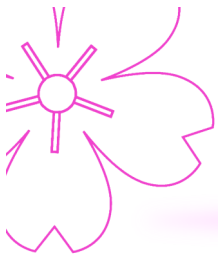
③ チュラJDP M2021生 学生の来日

第六期生となる2021年度入学生2名が、2022年12月1日に渡日し、本学の顎顔面矯正学分野及び咬合機能矯正学分野での研究を開始しました。コロナの影響もまだあり、通常よりも半年ほど遅れての渡日となりましたが、これから約1年間、研究データの収集・解析を行い、論文作成に取り組めます。研究だけでなく、本学の留学生や日本人学生との交流をとおして、日本語や日本の文化等についても吸収できる良い機会となることを期待しています。■

＊統合国際機構 国際交流課 JD・MPH係



渡日中の2020年度入学生・2021年度入学生



④ マヒドンJDP 一期生の来日

新型コロナウイルス感染拡大の影響を受け、来日が遅れていた一期生2名が、2022年10月より来日し、本学での臨床実習、研究活動を開始しました。

各診療科、受け入れ分野の教員の協力の元、消化管外科での臨床実習では、診療科の教員が他診療科と連携を取りながら徐々に内視鏡(消化器内科)の実習へと幅を広げつつ、論文執筆との両立に励んでいます。幹細胞制御分野での研究活動においては、新しい研究プロジェクトの一員として迎え入れられ、熱心に活動を続けています。

さらに、2名共に日本文化・習慣・疾患分布に高い関心を示し、日本語の学修を通じてコミュニケーションやネットワークの構築を広げるなど、JDPの利点を生かして活動する姿に、グローバルで活躍する人材として早くも期待が寄せられています。■

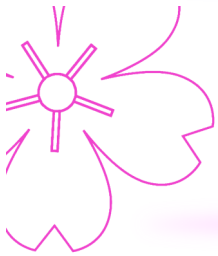
✧ 統合国際機構 国際交流課 JD・MPH係



2022年10月から本学での実習を開始した一期生

左: 幹細胞制御分野で研究を行うTanakorn氏

右: 消化管外科で臨床実習を行うTharathorn氏



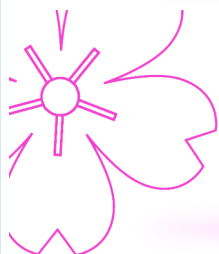
⑤ マヒドンJDP 2年次論文企画審査

2022年11月14日及び24日に、マヒドン大学及び東京医科歯科大学の指導教員により構成された評価委員による審査の元、Zoomで論文企画審査が行われました。論文企画審査の目的は、博士論文の作成を行うにあたり、思考過程を表現する能力、分析力、問題解決能力を備えており、自力で研究を構築する準備が整っていることを確認することにあります。2年次の学生3名は、自身の研究課題及び研究計画のプレゼンテーションを行い、評価委員から今後の研究活動に生かすためのアドバイスを受け、研究の第一歩を踏み出しました。今後も定期的に両大学の指導教員へ研究の進捗を報告し、2年後の学位論文審査に臨みます。■

✧ 統合国際機構 国際交流課 JD・MPH係



マヒドン大学の指導教員と、論文企画審査でプレゼンテーションを行う学生



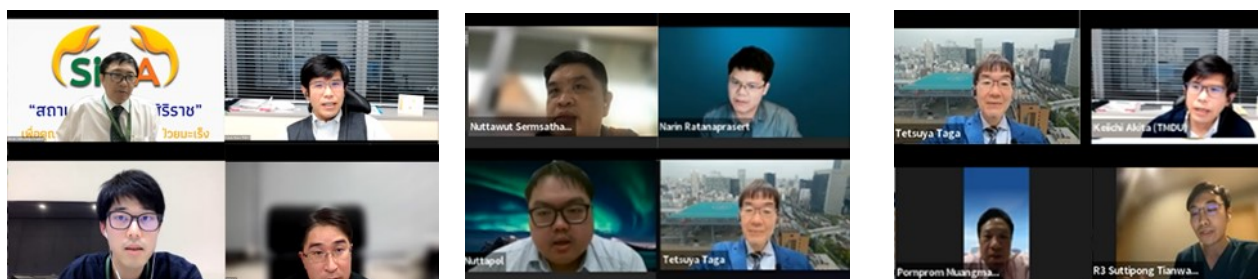
⑥ マヒドンJDP 1年次学生面談

2022年11月29日～30日に、マヒドンJDP 2022年4月入学3名と、学生の研究テーマを考慮し選定された本学及びマヒドン大学の研究担当教員との間で、今後の研究計画について話し合い、指導を行うための面談が行われました。

3名は自身の研究課題及び研究計画のプレゼンテーションを行い、両大学の研究担当教員から今後の研究計画について意見交換及び具体的なアドバイスを受ける貴重な機会となりました。

今後も両大学の研究担当教員が連携しながら指導を行い、研究遂行に必要な知識・技術が修得できるように薦めていきたいと考えております。■

✧ 統合国際機構 国際交流課 JD・MPH係



本学教員とマヒドンJDP1年次3名との面談の様子

【発行日】 2023年(令和5年) 4月28日

【制作】 国立大学法人 東京医科歯科大学

統合国際機構国際交流課総務係 (E-mail: kokusai.adm@tmd.ac.jp)

https://www.tmd.ac.jp/international/globalization/tmdu_international_collaboration_centers/thai/

【本学タイ拠点所在地】

CU-TMDU Research and Education Collaboration Center,
11F Navamaracha Building, Faculty of Dentistry, Chulalongkorn University,
Henri-Dunant Rd. Patumwan, Bangkok, Thailand