

第38回グローバルCOE海外研究者講演会

歯と骨の分子疾患科学の国際教育研究拠点 ーデント・メドミクスのインテリジェンスハブー

講師: **Dr. Irma Thesleff**

Professor

Developmental Biology Program

Institute of Biotechnology

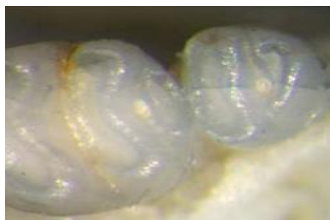
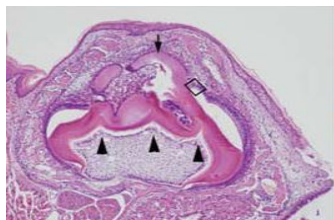
University of Helsinki Finland



日時: 2011年1月31日(月) 17:30~18:30

場所: 歯学部特別講堂(歯科外来事務棟4階)

演題: “Molecular mechanisms of tooth development”



Publication:

- An integrated gene regulatory network controls stem cell proliferation in teeth. Wang XP, Thesleff I et al. PLoS Biol. 2007
- Continuous tooth generation in mouse is induced by activated epithelial Wnt/beta-catenin signaling. Järvinen E, Thesleff I et al. Proc Natl Acad Sci U S A. 2006
- Regulation of mammalian tooth cusp patterning by ectodin. Kassai Y, Thesleff I et al. Science. 2005
- Nonindependence of mammalian dental characters. Kangas AT, Thesleff I et al. Nature. 2004