

TOKYO MEDICAL AND DENTAL UNIVERSITY

OUTLINE 2014



国立大学法人
東京医科歯科大学

Tokyo Medical and Dental University
Public Relations Division
1-5-45, Yushima, Bunkyo-ku, Tokyo 113-8510
TEL:+81-3-3813-6111

<http://www.tmd.ac.jp/english/>

知と癒しの匠を創造する



Cultivating Professionals with Knowledge and Humanity

Our daily work is dedicated to a word of gratitude and a smile of contentment from our patients and their family members.

In order to win the trust of people we serve, we affirm that:

- We will do our utmost to gain advanced knowledge and skills in medicine.
- We will cultivate empathy for the suffering and sorrow that accompany disease, and will always maintain a strong sense of ethics.
- We will support all those who are engaged in education, research and medical service as they continue their journey to become true professionals with knowledge and humanity.

The above is the mission of TMDU, which we declare with humility and strive to achieve.

TMDU's Educational Philosophies

To provide students with a broad education and a rich sensibility

To educate creative people capable of diagnosing and solving problems independently

To train medical professionals with a rich international quality

The symbol of
Tokyo Ikashika Daigaku
(Tokyo Medical and Dental University)
has the following meaning:



1. This symbol was designed to show the history of the development of Tokyo Medical and Dental University. Its shape represents the plum blossom, which is also the symbol of the neighboring shrine Yushima Tenmangu. Yushima Tenmangu is also known as Yushima Tenjin; Tenjin is the Shinto god of knowledge.
2. The center circle of this symbol, the core of the flower, was the emblem of the former Tokyo Koto Shikaigakko (Tokyo National School of Dentistry) and the five petals around the core show the present university which has developed from that school.
3. The five petals express the Faculty of Medicine, Faculty of Dentistry, College of Liberal Arts and Sciences, Institute of Biomaterials and Bioengineering, and Medical Research Institute, and these five petals, which join together to make the flower bloom, represent the activity of the university.
4. The bold outline of these petals suggests further development and progress in the future.

TMDU

Our university logo mark was designed based on the initial letters of Tokyo Medical and Dental University. It has following meanings:

1. By connecting the letters M and D, the logo mark implies fusion of Medicine and Dentistry.
2. Bold lines express confidence and strength which are the heritage of our university.



国立大学法人
東京医科歯科大学

Message from the President02

Brief History, Organization

Brief History / Principals and Presidents.....04

Management Structure06

Education and Research Structure.....08

Graduate Schools, Faculties

Graduate School of Medical and Dental Sciences.....10

Graduate School of Health Care Sciences.....12

Biomedical Science PhD Program13

Faculty of Medicine13

Faculty of Dentistry14

College of Liberal Arts and Sciences.....15

Institute of Biomaterials and Bioengineering.....16

Medical Research Institute17

Institute for Library and Media Information Technology18

Student Support and19

Health Administration Organization

Research and Industry-University Alliance Organization....20

Medical Hospital / Dental Hospital.....21

Nationwide Joint-use Institutes /24

Joint Institutes for Education and Research

Other Institutes25

Current Projects

Educational Programs.....26

Research Programs27

International Exchange

International Exchange Center29

Ghana-Tokyo Medical and Dental University29

Research Collaboration Program

Latin American Collaborative Research Center (LACRC)30

Tokyo Medical and Dental University, Santiago, Chile

CU-TMDU Research and Education30

Collaboration Center in Thailand

Alliance for Medical Education between

Tokyo Medical and Dental University and31

Partners HealthCare International, LLC.

Student exchange program between Faculty of

Medicine, Tokyo Medical and Dental University and31

Faculty of Medicine, Imperial College of

Science Technology and Medicine

International Summer Program, ISP.....32

Undergraduate Overseas Studying Awards33

2013 Postgraduate Overseas Studying Awards33

Studying Abroad during Project Semester33

Overseas Affiliated Universities /34

Achievements of Agreements

Number of International Students35

Statistics

Number of Staff Members.....36

Number of Graduate Students37

Number of Undergraduate Students38

Degrees Conferred39

Grants-in-Aid for Scientific Research (Fiscal Year 2014)....40

Entrusted Research Funds (Fiscal Year 2013).....40

Grants-in-Aid for Scientific Research from

Ministry of Health, Labour and Welfare40

(Fiscal Year 2014)

Endowed Departments41

Finances (Fiscal Year 2014 Budget).....41

Campus and Access

Location of University Campuses and Buildings42

Access.....43

Campus and Access.....44



President

吉澤靖之

Yasuyuki YOSHIKAWA

To become a world-leading integrated medical university

It was 45 years ago that I graduated from the Tokyo Medical and Dental University Faculty of Medicine. As a specialist in pulmonary medicine, I have worked in clinical medicine, research and education, and now I have been appointed the new president of TMDU. My principle task as president is to complete the second medium term targets and plan undertaken by the previous president, Takashi Ohyama. Then, I will be formulating the third medium term targets and plan.

TMDU has the wonderful mission of "Cultivating Professionals with Knowledge and Humanity," established during President Ohyama's time. Here, knowledge includes learning, technology, and identity, while humanity means culture, sensitivity, and communication ability that accepts diversity. We will aim to deploy these professionals domestically and globally, to become a world-leading integrated medical university.

I hope that the faculty and staff who share this mission will feel a strong sense of affiliation with TMDU, which will motivate everyone to realize our ideal. To achieve this, the university executive will provide overall management of our human and material resources, and ensure that we have the best hardware. In addition, we will establish a Policy Planning Office and a Strategic Planning Council under the president, and we will strengthen governance so that each organization will be able to make proactive planning proposals for the development of TMDU.

The Faculty of Medicine was founded 70 years ago, and I believe it is necessary for us to establish consistent traditions for clinical medicine, basic research, education, regional healthcare, and international contribution. The Faculty of Dentistry has a tradition going back to its founding 86 years ago. In order to break out of the deadlock that dentistry faces, I want to expand the field of activity of dentists by establishing dental departments in affiliated hospitals, among other initiatives.

I will address individual issues including establishing personnel development and strategic research systems, internationalization and so on in accordance with this basic approach. In terms of personnel development, I want to foster medical professionals who can give advice as specialists while understanding distress of their patients. Consequently, education at the university will shift from giving students problems to solve, to fostering the ability to discover problems and find the means to solve them.

I intend to start discussions towards a more flexible educational system that will permit switching courses between the faculties of Medicine and Dentistry, as well as exchanges and transfers between the Four-University Alliance of TMDU, Tokyo University of Foreign Studies, Tokyo Institute of Technology, and Hitotsubashi University. There may be regulatory issues and so on that make this

difficult to achieve in fact, but I want to pursue this actively to expand the opportunities for study and to improve personnel mobility.

To improve the strategic research system, it will be necessary to strengthen cooperation between the medical, dental and engineering departments, and to work towards implementation of the Research University Promotion Organization with the future merger of the Research and Industry-University Alliance Organization and the TMDU-URA Office established under the program for promoting the enhancement of research universities.

In pursuit of safe and reliable healthcare, we will further enhance the ongoing coordination between the Medical and Dental Hospitals. In order to achieve comprehensive healthcare, we will establish Clinics for General Medicine and strengthen cooperation between the clinics.

From the time of President Ohyama, TMDU has actively sought to make international contributions. In addition to the joint degree offered in Chile, we are pursuing a range of activities at our overseas offices in Thailand and Ghana. Currently the Faculty of Dentistry is taking the lead, but the Faculty of Medicine must also pursue international contributions through more active personnel development overseas. Besides our overseas offices, TMDU also plans to export its medical and dental educational curriculum to Southeast Asia and South America.

However, I am also aware of the importance of contributing to regional healthcare. We are now conducting personnel exchanges with affiliated hospitals and enhancing hospital-clinic cooperation while preparing the cooperative organization utilizing ICT by networking with clinics in the Ochanomizu area. The unfortunate reality is that private clinicians around TMDU still see it as a university that specializes in research and education.

We will also establish a working group for the 2020 Tokyo Olympics and Paralympics. From care of top athletes with our unique Hyperbaric Medical Center and Sports Medicine and Dentistry and expanded ER in response to terrorist threats, to our foreign language support for care of foreign tourists and IOC members in cooperation with other universities, we will consider how we can play an active role based on TMDU's strengths.

Besides these plans, there are many issues that must be addressed with greater urgency including improvement of incentives and working conditions for faculty and staff, and professional development for medical staff other than doctors. We will meet each of these requirements in accordance with the mission of TMDU.

Since I became president, I have decided to work in the spirit of my mottoes, "Do your best to be a positive thinker," and "If you know yourself, you can not be wicked."

Brief History / Principals and Presidents

Oct. 12, 1928	· Tokyo National School of Dentistry was founded.	May. 1989	· Laboratory for Biomedical Analysis was established. (closed in May. 1996)
Apr. 1944	· Tokyo Medical and Dental College was established.	Apr. 1992	· Dept. of Maxillofacial Rehabilitation established as a Core Departmente.
Aug. 1946	· Tokyo Medical and Dental University (The Former System) was established.	Apr. 1993	· Medical Research Division (Health Care Sciences) was established. · Human Gene Sciences Center was established. (reorganized in Apr. 2010)
Jun. 1949	· Medical Hospital and Dental Hospital were established.	Jan. 1995	· Information Center for Medical Sciences was established. (reorganized in Apr.2010)
Apr. 1951	· Tokyo Medical and Dental University (The New system), Faculty of Medicine and Faculty of Dentistry were established. · Research Institute for Dental Materials was established. · School of Nursing was established. (closed in Mar. 1991) · School for Dental Hygienists was established. (closed in Mar. 2005)	May. 1996	· Instrumental Analysis Research Center for Life Science was established. (reorganized in Apr.2003)
Apr. 1952	· School of Dental Technologists was established. (closed in Mar. 2014)	Apr. 1998	· General Isotope Center was established. (reorganized in Apr. 2003)
Apr. 1955	· Medical Research Division was established. · Dental Research Division was established. · Premedical and Predental Course was established in Faculty of Humanities and Sciences, University of Chiba. (closed in Mar. 1958)	Apr. 1999	· Graduate School was established. · Institute of Biomaterials and Bioengineering was established.
Apr. 1958	· Premedical and Predental Course was established at Kounodai Annex.	Apr. 2000	· Graduate School of Medical and Dental Sciences was established. · Graduate School of Allied Health Sciences was established. · International Student Center was established. (reorganized in Mar. 2009)
Apr. 1962	· School of Medical Technology was established. (closed in Mar. 1973)	Apr. 2001	· Graduate School of Health Care Sciences was established.
Apr. 1965	· College of Liberal Arts and Sciences was established.	Apr. 2002	· Center for Education Research in Medicine and Dentistry was established.
Apr. 1966	· Research Institute for Dental Materials renamed Institute for Medical and Dental Engineering.	Apr. 2003	· School of Biomedical Science was established. (closed in Mar. 2012) · Biomedical Science PhD Program was established. · Research Center for Frontier Life Science was established. (reorganized in Apr. 2010)
Apr. 1970	· Health Administration Center was established.	Sep. 2003	· Intellectual Property Division was established. (reorganized in Apr. 2011)
Apr. 1972	· Animal Research Center was established. (closed in Mar. 1991)	Apr. 2004	· In accordance with the National University Corporation Law, National University Corporation Tokyo Medical and Dental University was established. · School of Oral Health Care Sciences was established.
Sep. 1973	· Medical Research Institute was established.		
Apr. 1989	· School of Allied Health Sciences was established.		

Apr. 2009	· International Exchange Center was established.
Dec. 2009	· Student Center was established.
Apr. 2010	· Institute for Library and Media Information Technology was established. · Research Center for Medical and Dental Sciences was established. · Center for Experimental Animal was established. · Center for Interprofessional Education was established. · The Life Science and Bioethics Research Center became a permanent institution.
Apr. 2011	· School of Oral Health Care Sciences (Oral Health Care Scienses, Oral Health Engineering) was established. · Research and Industry-University Alliance Organization was established.
Aug. 2011	· The Tokyo Medical and Dental University Foundation was established.
Nov. 2011	· Hospital Administration Planning Division was established.
Apr. 2012	· Graduate School of Medical and Dental Sciences was established. · Support Office for Female Researchers was established. · Center for Sports Medicine and Sports Dentistry was established.
Feb. 2013	· Bioresource Research Center became a permanent institution.
Apr. 2013	· Center for Stem Cell and Regenerative Medicine was established. · Student Support and Health Administration Organization was established. · Health Administration Office for Employees was established. · Public Relations Division was established.
Oct. 2013	· Research University Promotion Organization was established.
Apr. 2014	· Nursing Innovation Science was established. · Cooperative Doctoral Course in Disaster Nursing was established. · Center for Brain Integration Research became a permanent institution.

Principals and Presidents

Tokyo National School of Dentistry
Toru SHIMAMINE | Oct. 13, 1928 - Mar. 31, 1944

Tokyo Medical and Dental College
Toru SHIMAMINE | Apr. 1, 1944 - Feb. 9, 1945

Tokyo Medical and Dental College
Masaru NAGAO | Feb. 10, 1945 - Feb. 19, 1945

Tokyo Medical and Dental College
Masaru NAGAO | Feb. 20, 1945 - Mar. 31, 1950

Tokyo Medical and Dental University
Masaru NAGAO | Aug. 27, 1946 - Oct. 4, 1946

Tokyo Medical and Dental University (The Former System)
Masaru NAGAO | Oct. 5, 1946 - Mar. 31, 1951

Tokyo Medical and Dental University (The New System)
Masaru NAGAO | Apr. 1, 1951 - Jun. 30, 1961
Masahiro OKADA | Jul. 1, 1961 - Feb. 29, 1968

Tokyo Medical and Dental University
Keizo OTA | Mar. 1, 1968 - Mar. 15, 1968

Tokyo Medical and Dental University
Keizo OTA | Mar. 16, 1968 - Oct. 8, 1969

Tokyo Medical and Dental University
Fumihiko SHIMIZU | Oct. 9, 1969 - Sep. 17, 1970

Tokyo Medical and Dental University
Fumihiko SHIMIZU | Sep. 18, 1970 - Sep. 17, 1974
Yasuji KATSUKI | Sep. 18, 1974 - Jul. 31, 1977
Hisashi YOSHIDA | Aug. 1, 1977 - Jul. 31, 1985
Rokuro KANO | Aug. 1, 1985 - Jul. 31, 1991
Hajime YAMAMOTO | Aug. 1, 1991 - Jul. 31, 1995
Akio SUZUKI | Aug. 1, 1995 - Mar. 31, 2004

National University Corporation Tokyo Medical and Dental University
Akio SUZUKI | Apr. 1, 2004 - Mar. 31, 2008
Takashi OHYAMA | Apr. 1, 2008 – Mar. 31, 2014
Yasuyuki YOSHIZAWA | Apr. 1, 2014 –

Management Structure



Deputy Directors

- Yuichi IZUMI**
University Innovation and Globalization
- Fumitoshi ISHINO**
University Innovation and Globalization
- Shu TAKEDA**
University Innovation and Globalization
- Kohji MITSUBAYASHI**
University Innovation and Globalization
- Kozo TAKASE**
Information Infrastructure
- Masanobu KITAGAWA**
Education
- Masao KIYOTA**
Education
- Yasunari MIYAZAKI**
Faculty and Student Affairs
- Takashi ONO**
International Student Exchange
- Miyuki AZUMA**
Admissions and High School-University Collaboration
- Kazunori KIHARA**
Medical Hospital Administration
- Masahiko SHIMADA**
Dental Hospital Administration
- Tatsuyuki KAWANO**
International Health Care Partnerships
- Kazuaki KANDA**
Hospital Administration General Affairs
- Shigetaka KITAJIMA**
Research
- Hiroshi ASAHARA**
Research
- Joji INAZAWA**
Research
- Takao HANAWA**
Research
- Yoshinobu EISHI**
International Research Cooperation
- Hikaru NAKASHIMA**
Accreditation and Evaluation
- Sachiko ISEKI**
Accreditation and Evaluation
- Akio KISHIDA**
Accreditation and Evaluation
- Izumi SUGIHARA**
Accreditation and Evaluation
- Mitsue MARU**
Accreditation and Evaluation
- Hiroshi KONDO**
Administrative General Affairs
- Kazuo TAKAKUDA**
Public Relations

Administrative Council

Deliberate on management issues

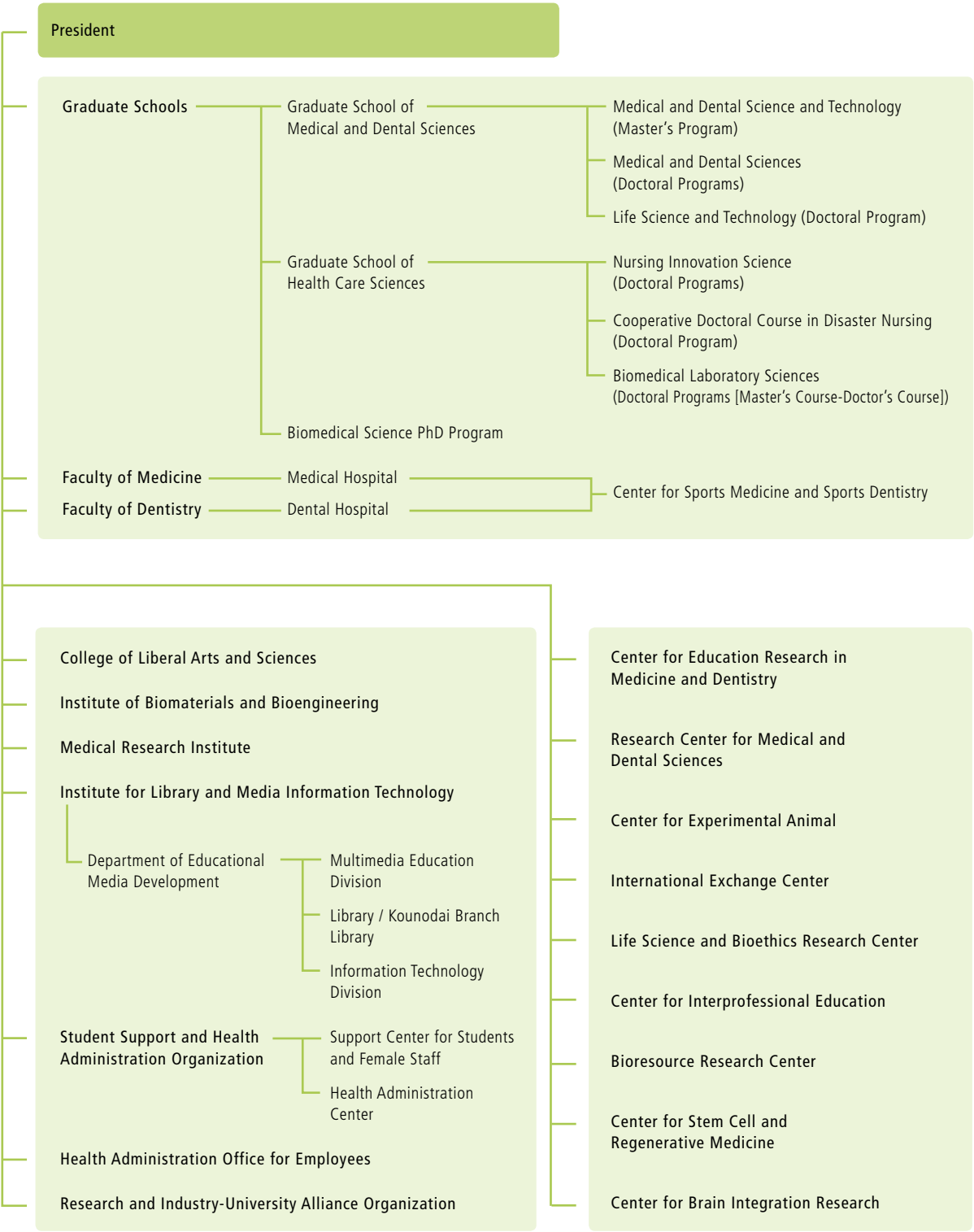
- Internal Committee**
 - Yasuyuki YOSHIZAWA**
President
 - Hajime KARASUYAMA**
Executive Director
(University Innovation and Globalization)
 - Junji TAGAMI**
Executive Director
(Education and International Student Exchange)
 - Ikuo MORITA**
Executive Director
(Research and International Cooperation)
 - Yujiro TANAKA**
Executive Director
(Hospital Administration and International Health Care Partnerships)
 - Shigeki TAKAHASHI**
Adjunct Executive Director
(Legal Affairs and Compliance)
- External Committee**
 - Nobuyuki IDEI**
Founder & CEO, Representative Director,
Quantum Leaps Corporation
 - Takayoshi INOUE**
Adviser, Foundation for the Promotion of
The Open University of Japan
 - Kikuo OHNO**
Previous Executive Director, Professor Emeritus
 - Yoshitoshi KITAJIMA**
Dai Nippon Printing Co.,Ltd, President
 - Hideaki SUDA**
Previous Executive Director, Professor Emeritus
 - Akira SESHIMO**
Aioi Nissay Dowa Insurance Co., Ltd, Special Adviser
 - Tsuneo WATANABE**
Chairman, Board of Trustees, Editor-in-Chief,
The Yomiuri Shimbun Holdings

Education and Research Council

Deliberate on educational and research issues

- Yasuyuki YOSHIZAWA**
President
- Hajime KARASUYAMA**
Executive Director
(University Innovation and Globalization)
- Junji TAGAMI**
Executive Director
(Education and International Student Exchange)
- Ikuo MORITA**
Executive Director
(Research and International Cooperation)
- Yujiro TANAKA**
Executive Director
(Hospital Administration and International Health Care Partnerships)
- Shigeki TAKAHASHI**
Adjunct Executive Director
(Legal Affairs and Compliance)
- Akinori KIMURA**
Vice President
(Accreditation and Evaluation)
- Hiroshi KONDO**
Vice President
(Administrative General Affairs)
- Tetsuya TAGA**
Vice President (Public Relations)
- Takayoshi MAMINE**
Vice President
(University Research Administration)
- Keiji MORIYAMA**
Dean, Graduate School of Medical and Dental Sciences
Dean, Faculty of Dentistry
- Minoru TOZUKA**
Dean, Graduate School of Health Care Sciences
- Hiroyuki KAGECHIKA**
Dean, Biomedical Science PhD Program
- Yoshinobu EISHI**
Dean, Faculty of Medicine
- Masao KIYOTA**
Dean, College of Liberal Arts and Sciences
- Yuji MIYAHARA**
Director, Institute of Biomaterials and
Bioengineering
- Fumitoshi ISHINO**
Director, Medical Research Institute
- Kazunori KIHARA**
Director, Medical Hospital
- Masahiko SHIMADA**
Director, Dental Hospital
- Atsuhiko KINOSHITA**
Director General, Institute for Library and
Media Information Technology
- Yasunari MIYAZAKI**
Officer, Student Support and
Health Administration Organization
- Kentaro SHIMOKADO**
Professor, Graduate School of
Medical and Dental Sciences (Medical Division)
- Miyuki AZUMA**
Professor, Graduate School of
Medical and Dental Sciences (Dental Division)
- Yayoi SAITO**
Professor, Graduate School of
Health Care Sciences
- Hikaru NAKASHIMA**
Professor, College of Liberal Arts and Sciences
- Takao HANAWA**
Professor, Institute of Biomaterials and
Bioengineering
- Tetsushi FURUKAWA**
Professor, Medical Research Institute

Education and Research Structure



Graduate Schools

Keiji MORIYAMA
Dean, Graduate School of Medical and Dental Sciences

Yoshinobu EISHI
Vice Dean, Graduate School of Medical and Dental Sciences

Hiroyuki KAGECHIKA
Vice Dean, Graduate School of Medical and Dental Sciences

Minoru TOZUKA
Dean, Graduate School of Health Care Sciences

Hiroyuki KAGECHIKA
Dean, Biomedical Science PhD program

Medical Research Institute

Fumitoshi ISHINO
Director

Research Center for Medical and Dental Sciences

Masataka NAKAMURA
Director

Institute for Library and Media Information Technology

Atsuhiko KINOSHITA
Director General, Institute for Library and Media Information Technology

Atsuhiko KINOSHITA
Director, Multimedia Education Division

Atsuhiko KINOSHITA
Director, Library

Kazuyo KUROYANAGI
Director, Kounodai Branch Library

Kozo TAKASE
Director, Information Technology Division

Center for Experimental Animal

Masami KANAI
Director

International Exchange Center

Ikuko MORIO
Director

Life Science and Bioethics Research Center

Masayuki YOSHIDA
Director

Center for Interprofessional Education

Kazuki TAKADA
Director

Bioresource Research Center

Joji INAZAWA
Director

Center for Stem Cell and Regenerative Medicine

Ichiro SEKIYA
Director

Center for Brain Integration Research

Hitoshi OKAZAWA
Director

Center for Sports Medicine and Sports Dentistry

Kazuyoshi YAGISHITA
Director

Faculty of Medicine

Yoshinobu EISHI
Dean, Faculty of Medicine

Masanobu KITAGAWA
Director, School of Medicine

Taiko HIROSE
Director, School of Health Care Sciences

Kazunori KIHARA
Director, Medical Hospital

Faculty of Dentistry

Keiji MORIYAMA
Dean, Faculty of Dentistry

Masato TAIRA
Director, School of Dentistry

Tetsuya SUZUKI
Director, School of Oral Health Care Sciences

Masahiko SHIMADA
Director, Dental Hospital

College of Liberal Arts and Sciences

Masao KIYOTA
Dean, College of Liberal Arts and Sciences

Institute of Biomaterials and Bioengineering

Yuji MIYAHARA
Director

Health Administration Office for Employees

Yasunari MIYAZAKI
Director

Research and Industry-University Alliance Organization

Ikuo MORITA
Officer, Research and Industry-University Alliance Organization

Center for Education Research in Medicine and Dentistry

Nobuo NARA
Director

Graduate School of Medical and Dental Sciences

Human Resource Development Goals Master’s Program

This course is rooted in a systematic curriculum developed through the fusion of numerous fields, with the primary focus on medicine, dentistry, and life science and technology. The goals of the course are to inspire mutual cooperation in the various domains of life sciences and to develop capable educators, researchers, technicians, and other professionals in medicine, dentistry, and life science and technology who bring extensive knowledge and high ethical standards regarding human health and welfare to their work.

In detail, the Master of Medical Administration Course strives to effectively address today’s social needs pertaining to medical services, based on a curriculum structured to develop professionals who will excel in positions of leadership. Specifically, the course is designed to train individuals who will help establish social systems that supply increasingly efficient and superior patient-focused health care through the fields of medical administration and policy.

Master’s Program

Medical and Dental Science and Technology

Medical and Dental Science and Technology, Master of Medical Administration Course

Doctoral Programs Medical and Dental Sciences

This course is devoted to developing researchers who are well-versed in specialized knowledge that spans both medicine and dentistry and who act as global leaders and cooperate closely with their counterparts in other fields; educators who are rich in spirit and have highly developed expertise in devising and implementing effective educational strategies; highly specialized medical professionals who have uncompromising ethical views and a passionate interest in research; and opinion leaders who will act as pioneers in a new and more progressive era.

Life Science and Technology

This program is designed to develop professionals who have comprehensive knowledge in the field of life science and technology. These individuals will attain high degrees of specialization and problem-solving abilities and bring their impressive educational background and global perspective to interdisciplinary fields positioned to fuse the various domains of life science and technology with disease research. In particular, the envisioned outcomes include the training of researchers who have advanced capabilities in the fulfillment of research objectives, educators who achieve distinguished levels of scholarship and possess an exceptional sense of humanity, and professionals who have the high-caliber management skills required for cutting-edge innovation in such fields as biotechnology and medical equipment development and who can flourish on the frontlines of the business world.

Doctoral Programs

Medical and Dental Sciences

Oral Health Sciences	Anesthesiology and Clinical Physiology
Oral Pathology	Orofacial Pain Management
Bacterial Pathogenesis	Pediatric Dentistry
Molecular Immunology	Orthodontic Science
Advanced Biomaterials	Cariology and Operative Dentistry
Diagnostic Oral Pathology	Fixed Prosthodontics
Organic Biomaterials	Pulp Biology and Endodontics
Functional Material	Removable Partial Prosthodontics
Oral Radiation Oncology	Oral Implantology and Regenerative Dental Medicine
Oral and Maxillofacial Surgery	
Oral and Maxillofacial Radiology	

Maxillofacial and Neck Reconstruction	Molecular Craniofacial Embryology
Plastic and Reconstructive Surgery	Cellular Physiological Chemistry
Head and Neck Surgery	Metals
Radiation Therapeutics and Oncology	Biodesign
Maxillofacial Anatomy	Maxillofacial Surgery
Cognitive Neurobiology	Maxillofacial Orthognathics
	Maxillofacial Prosthetics

Bio-Matrix	Connective Tissue Regeneration
Cell Biology	Biochemistry
Medical Biochemistry	Cell Signaling
Joint Surgery and Sports Medicine	Inorganic Materials
Biostructural Science	Periodontology
Pharmacology	

Public Health	Forensic Dentistry
Health Promotion	Health Care Economics
Environmental Parasitology	Dental Education Development
Forensic Medicine	Oral Health Promotion
International Health and Medicine	Sports Medicine and Dentistry
Health Care Management and Planning	Educational System in Dentistry
Molecular Epidemiology	Educational Media Development
Research Development	Insured Medical Care Management
Health Policy and Informatics	
Life Sciences and Bioethics	

Gerontology and Gerodontology	Rehabilitation Medicine
Geriatrics and Vascular Medicine	Gerodontology and Oral Rehabilitation

Comprehensive Patient Care	Clinical Oncology
Laboratory Medicine	Dentistry for Persons with Disabilities
Critical Care Medicine	General Dentistry
Liaison Psychiatry and Palliative Medicine	Psychosomatic Dentistry
Pharmacokinetics and Pharmacodynamics	Behavioral Dentistry
Medical Education Research and Development	Temporomandibular Joint and Oral Function
Acute Critical Care and Disaster Medicine	Professional Development in Health Sciences

Cognitive and Behavioral Medicine	Otorhinolaryngology
Neuroanatomy and Cellular Neurobiology	Neurology and Neurological Science
Systems Neurophysiology	Psychiatry and Behavioral Sciences
Pharmacology and Neurobiology	Neurosurgery
Molecular Neuroscience	Endovascular Surgery
Neuropathology	NCNP Brain Physiology and Pathology
Ophthalmology and Visual Science	

Bio-Environmental Response	Pathological Biochemistry
Immune Regulation	Immunology
Molecular Virology	Pediatrics and Developmental Biology
Immunotherapeutics	Rheumatology
Cellular and Environmental Biology	Dermatology
Biodefense Research	NCCHD Child Health and Development
Pathological Cell Biology	

Systemic Organ Regulation	Gastroenterology and Hepatology
Human Pathology	Surgical Oncology
Physiology and Cell Biology	Cardiovascular Medicine
Molecular Cellular Cardiology	Anesthesiology
Molecular Medicine and Metabolism	Cardiovascular Surgery
Stem Cell Regulation	Nephrology
Molecular Pharmacology	Comprehensive Reproductive Medicine
Molecular Cell Biology	Urology
Epigenetics	Esophageal and General Surgery
Chronobiology	Thoracic Surgery
Stem Cell Biology	Igakuken Disease-oriented Molecular Biology
Respiratory Medicine	

Advanced Therapeutic Sciences	Bioinformatics
Clinical Anatomy	Applied Gene Medicine
Systems BioMedicine	Molecular Cytogenetics
Comprehensive Pathology	Biochemical Genetics
Molecular Oncology	Structural Biology
Surgical Pathology	Hematology
Experimental Animal Model for Human Disease	Molecular Endocrinology and Metabolism
Signal Gene Regulation	Hepatobiliary and Pancreatic Surgery
Biofunctional Molecular Science	Orthopaedic and Spinal Surgery
Medicinal Chemistry	Diagnostic Radiology and Nuclear Medicine
Biomedical Devices and Instrumentation	Disease Genomics
Medical Instrument	Human Genetics and Disease Diversity
Biomechanics	Applied Regenerative Medicine
Biointerface Engineering	JFCR Cancer Biology
Material Biofunctions	
Genetic Regulation	

Life Science and Technology

Life Science and Technology	Immunology
Microbial Genomics and Ecology	Epigenetics
Biomedical Devices and Instrumentation	Computational Biology
Biomedical Information	Structural Biology
Bioelectronics	Neuroscience
Material-Based Medical Engineering	Bio-informational Pharmacology
Organic and Medicinal Chemistry	Therapeutic Genomics
Chemical Bioscience	Molecular Genetics
Metallic Biomaterials	Epigenetic Epidemiology
Inorganic Biomaterials	Genome Structure and Regulation
Organic Materials	RIKEN Molecular and Chemical Somatology
Medical Robotics	Molecular Biomedicine
Molecular Cell Biology	NCC Cancer Science
Developmental and Regenerative Biology	

Endowed Departments

Department of Pharmacovigilance

Department of Nanomedicine

Department of Translational Oncology

Department of Liver Disease Control

Department of Cartilage Regeneration

Department of Advanced Therapeutics for GI Diseases

Department of Orthopaedic Research and Development

Department of Sleep Modulatory Medicine

Department of Pediatrics, Perinatal and Maternal Medicine

Department of Chronic Kidney Disease

Department of Organ Network and Metabolism

Department of Joint Reconstruction

Department of Women's Health

Department of Advanced Surgical Technology Research and Development

Department of Preemptive Medicine and Metabolism

Department of Arteriosclerosis and Vascular Biology

Graduate Schools

Graduate School of Health Care Sciences

Nursing Innovation Science—
Human Resource Development Goals

Building on knowledge and techniques acquired in the undergraduate program, the Nursing Innovation Science aims to train high-level practitioners capable of working in an international and interdisciplinary environment by fostering scientific thinking alongside research, teaching, and applied capabilities, and instilling a broad perspective and high sense of ethics suitable for the healthcare and medical field.

Cooperative Doctoral Course in
Disaster Nursing—Human Resource
Development Goals

With nursing science as the basis, students work in concert and cooperation with related disciplines, undertaking research on the theory and application of science from the viewpoint of collaboration among industry, government and academia while delving deeply into the field of disaster nursing in particular. The Cooperative Doctoral Course in Disaster Nursing endeavors to produce disaster nursing practitioners, educators, and researchers with the ability to lead in an international and interdisciplinary environment as global leaders with high-level practical capabilities, capable of responding to and finding solutions for a wide range of challenges related to disaster nursing, with the aim of helping build a healthy human society and contributing to safety, peace of mind, and autonomy.

Biomedical Laboratory Sciences—
Human Resource Development Goals

(1) Master's Course

The Master's Course builds on the knowledge and techniques learned in the undergraduate program, deepening the student's scholarship in the field of specialization while fostering scientific thinking and research capabilities to produce medical professionals, researchers, and educators with a high sense of ethics.

(2) Doctor's Course

The Doctor's Course trains autonomous researchers with a broad perspective suitable for the healthcare and medical field who are capable of working in an international and interdisciplinary environment.

Doctoral Programs

Nursing Innovation Science

Development Studies in Fundamental Nursing

Innovation in Fundamental and Scientific Nursing care

Innovation in Fundamental and Scientific Nursing Care

Health Promotion Nursing

Community Health Nursing

Community Health Promotion Nursing

Development Studies in Clinical Nursing

Critical and Invasive-Palliative Care Nursing

Critical and Invasive-Palliative Care Nursing

Mental Health and Human Development Nursing

Mental Health and Psychiatric Nursing

Child and Family Nursing

Reproductive Health Nursing

Home Care and End-of-Life Care Nursing

Home Care Nursing

End-of-Life Care and Oncology Nursing

Leading Nursing System Development

International Nursing System Development

International Nursing Development

Nursing System Management

Geriatric Nursing and Administration

Geriatric Nursing and Administration

Cooperative Doctoral Course in
Disaster Nursing

Doctoral Programs (Master's Course-Doctor's Course)

Biomedical Laboratory Sciences

Life Sciences and Bio-informatics

Biochemistry and Biophysics

Anatomy and Physiological Science

Biofunctional Informatics

Biophysical System Engineering

Moleculo-genetic Sciences

Analytical Laboratory Chemistry

Microbiology and Immunology

Molecular Pathology

Laboratory Molecular Genetics of Hematology

Advanced Analytical Chemistry

Graduate Schools

Biomedical Science PhD Program

Doctoral Programs (Master's Course-Doctor's Course)

Bioinformatics

Functional Biology

Faculties

Faculty of Medicine

School of Medicine

School of Health Care Sciences

Nursing Science

Medical Technology

Mission Statement

The Faculty of Medicine was established in 1951 and now consists of the School of Medicine and the School of Health Care Sciences. Subjects taught at the School of Medicine include Functional Morphology, Physiology and Pharmacology, Molecular Genetics, Infectious Immunology, Pathology, Environmental Social Medicine, Comprehensive Diagnostics, Internal Medicine, Pediatric Medicine, Neurology and Psychiatry, Surgery, Sensory Organ Sciences, Dermatology and Plastic Surgery, Female Medicine and Urology and Reproductive Medicine. School of Health Care Sciences includes two courses of Nursing Science and Medical Technology. Subjects of the former are Fundamental and Clinical Nursing and Community Health Nursing. Subjects of the latter are Laboratory Science and Laboratory Technology.

The School of Medicine and the School of Health Care Sciences welcome talented students who will become leaders in medical science and treatment not only in the future Japan but also in the future world. Furthermore, we seek students of

lively imagination, with deep consideration for others and with strong spirit for contribution to people's welfare.

Based on the three fundamentals of educational philosophy of Tokyo Medical and Dental University (TMDU), all staff in the School of Medicine concentrate on training students to obtain academic and medical knowledge, high professional skills in clinical medicine, a researcher's mind, a heart full of humanity, and excellent insights. We hope that many of our students will contribute to our and international societies.

The School of Medicine has been improving its educational curriculum in recent years, introducing a tutor system in problem-based medicine, the MD-PhD course, the TMDU-Imperial College (London) Student Exchange Program and other international exchange programs, the Harvard Medical School Externship program for 8-11 selected students every year, the project semester program for learning basic research for the 4th-year students, and clinical clerkship for the 5th- and 6th year students.

The philosophy of the School of Health Care Sciences is based on sound knowledge and a high moral and ethical standard. We aspire to the development and personal training of health care professionals who possess originality and creativity in their ideas. The school offers professional education in nursing science and laboratory science based on an interdisciplinary approach.

Currently running projects in the Faculty of Medicine include "Human Resource Development Plan for Cancer," which is a training program for specialists in cancer in collaboration with Graduate School, "Program to Create an Infectious Diseases Research Center" which involves extensive research of emerging and re-emerging infectious diseases at the research center (Noguchi Memorial Institute for Medical Research) in Ghana, West Africa, and "Special Funds for Education and Research" which offers students medical education that meets the highest global standards.

Faculty of Dentistry

School of Dentistry

Mission Statement

The educational philosophy of the School of Dentistry is primarily to foster dentists who can promote and maintain health by faithfully providing comprehensive dental care and contributing to the development of dental medicine and service from a global perspective. We deem it our mission to educate dental students who have attained the following goals at the time of graduation:

- 1. Acquire a broad range of general knowledge and have wide experience, so as to become a dentist with a rich sense of humanity.
- 2. Understand scientific principles and concepts and acquire knowledge in bioscience.
- 3. Have an inquiring mind to enable the independent discovery of problems and the solutions thereto.
- 4. Acquire knowledge and basic skills necessary for the prevention, diagnosis and treatment of diseases in the oral and maxillofacial regions, based on a deep understanding of normal and pathologic general conditions.
- 5. Fully understand the importance of the role of dental medicine and dental care in society.

School of Oral Health Care Sciences

Mission Statement

The educational philosophy of the School of Oral Health Care Sciences is to promote professional leaders with kind and well-rounded humanity, based on knowledge and technology of oral health and welfare, who can contribute to society for people’s healthy and happy lives. The following goals are to be met by graduation:

- 1. Understand the dignity of life as well as scientific principles and concepts, and acquire knowledge in bioscience.
- 2. Respect fundamental human rights and acquire the ability to associate with people who understand the way other people feel and behave.
- 3. Understand the role and importance of oral health and welfare in society.

- 4. Understand various conditions of mind and body to acquire knowledge and utilize technology to promote oral health.
- 5. Acquire an inquiring mind and problem-solving ability and have the will to pursue lifelong learning.
- 6. Acquire the ability to act as a specialist of health, medical treatment or welfare.
- 7. Learn the ability to contribute internationally from the point of view of oral health.
- 8. Acquire high ethics as a medical professional with deep understanding of people and rich sensibilities.
- 9. Acquire the desire to contribute to society with advanced knowledge and the technical ability to be a “Manufacturing Specialist” who promotes QOL.

Oral Health Care Sciences

Lifetime Oral Health Care Sciences	Oral Health Care Science for Community and Welfare
Oral Care for Systemic Health Support	Oral Health Care Education
Preventive Oral Health Care Sciences	Basic Sciences of Oral Health Care

Oral Health Engineering

Fundamental Oral Health Engineering	Oral Materials Science and Technology
Basic Oral Health Science	Oral Health Information Technology
Comprehensive Oral Health Engineering	Oral Biomaterials Engineering
Oral Clinical Science	
	Oral Prosthetic Sciences
	Fixed Prosthetic Engineering
	Oral Prosthetic Engineering

College of Liberal Arts and Sciences

Mission Statement

To become health professionals and citizens who can contribute to a global society, students need to develop the intellectual capacity to appreciate diverse cultures and values, and the emotional capacity to understand and empathize with others. In addition, these students need to learn about ethical standards and improve their ability to communicate with others.

To develop such students is the responsibility of the College of Liberal Arts at TMDU, the only national university in Japan with a faculty of liberal arts. To serve our institution’s mission as a graduate university, we have the following aims for students in the College:

- 1. To develop as civic-minded professionals who can participate in a global society.
- 2. To develop the scientific and analytic mindset needed both to identify and solve problems.
- 3. To acquire the communication skills required to contribute to the global healthcare profession.
- 4. To acquire the strong foundation needed to support future study.

Human Sciences

Humanities and Social Sciences	Health Sciences and Physical Education
Philosophy	
History	
Literature	

Natural Sciences

Mathematics	Chemistry
Physics	Biology

Foreign Languages

English	Additional Foreign Languages
	German
	French
	Chinese



Hippocrates Hall



Champ de Causerie

Institute of Biomaterials and Bioengineering

Mission Statement

The Institute of Biomaterials and Bioengineering (IBB) was originally established in 1951 as the Research Institute of Dental Materials with the aim of developing innovative dental devices and materials. After being re-organized into the Institute for Medical and Dental Engineering in 1966, the Institute was given its present name in 1999. In 2012, the IBB took its present shape of having 4 large divisions consisting of 12 departments and the newly opened Medical and Dental Device Technology Incubation Center. Since its establishment, the IBB has been contributing to the development of biomaterials and medical devices as an international forerunner through the harmonizing of engineering and technological science with medical and dental sciences.

In particular, the IBB has been promoting three objectives in order to expand and deepen the basic science for biomaterials and bioengineering since 2004, when Tokyo Medical and Dental University was reorganized into a national university corporation, leading to the development of applied science and technologies for the advanced medicine and dentistry:

- 1. An inquiry into Nano-Bioscience for Advanced Medicine and Dentistry
- 2. The creation of Bio-Inspired Biomaterials for New Clinical Applications
- 3. The development of Bio-System Engineering for Advanced Medical and Dental Devices

While the research environment around us is drastically and rapidly changing, the IBB has been making continuous efforts to take a leading role as an international center of excellence of biomaterials and bioengineering.

Biomedical Materials

Metallic Biomaterials
Inorganic Biomaterials
Organic Biomaterials

Biofunctional Restoration

Material Biofunctions
Material-based Medical Engineering
Biomechanics

Medical Devices

Bioelectronics
Biomedical Information
Biomedical Devices and Instrumentation

Biomolecular Chemistry

Medicinal Chemistry
Chemical Bioscience
Organic and Medicinal Chemistry

Medical and Dental Device Technology Incubation Center



Street view of the IBB

Medical Research Institute

Mission Statement

Our research focus is to tackle issues in medical science with the hope of contributing to the development of measures for patients who are suffering from intractable diseases. These disorders include metabolic, neurological, psychiatric, cardiovascular, loco-motor, immunological, genetic, infectious and neoplastic diseases. The pathophysiological bases of these diseases should be understood on the bases of molecular analyses of the malfunction and impaired regulation of homeostasis.

State-of-the-art science into the cellular and molecular mechanisms operating in the life of basic organisms as well as humans has been sought vigorously in our institute and this activity has been continuously expanding in recent years. This is reflected in our record of recent publications as well as the amounts of major grants obtained in the field of medical science including the participation of many staff members of our institute in the 21st Century COE program of our university. The strength of the Medical Research Institute also lies in its close ties with the newly commenced graduate school system. The number of young investigators in our institute has increased significantly and the new educational system has been attracting attention of the medical science society.

The activity of our institute has been international. We have established scientific ties with a number of overseas universities and institutions such as Harvard University in addition to the various international collaborations in our research activities, we have been accepting many visitors worldwide including scientists from major institutes.

International symposiums and seminars have been constantly held to provide cutting edge knowledge in medical science but also opportunities to establish relationship among young scientists and world top class investigators.

As the Medical Research Institute is growing in a number of respects as a young institution in the field of molecular medical science, we are welcoming everyone who is interested in joining us in our endeavor to seek for the clues to cure patients with intractable diseases in the future by unraveling the great mysteries of nature.

Advanced Molecular Medicine

Molecular Medicine and Metabolism
Molecular Pharmacology
Molecular Cell Biology
Molecular Neuroscience
Biodefense Research
Bio-informational Pharmacology
Stem Cell Regulation
Structural Biology
Frontier Research Unit Oxygen Biology
Tenure Track Unit Cellular and Molecular Medicine

Pathophysiology

Neuropathology
Pathological Biochemistry
Pathological Cell Biology
Developmental and Regenerative Biology
Stem Cell Biology
Immunology
Molecular Pathogenesis
Frontier Research Unit Virology
Project Research Unit Stress Bio-Marker Research

Medical Genomics

Molecular Cytogenetics
Molecular Genetics
Molecular Epidemiology
Biochemical Genetics
Genomic Pathology
Epigenetics
Bioinformatics
Frontier Research Unit Redox Response Cell Biology
Frontier Research Unit Gene Expression
Project Research Unit Neuroinformatics

Integrative Research

Biosystem Generation
Pathogenetic Regulation

Advanced Technology Laboratory

Genome Laboratory
Laboratory of Cytometry and Proteome
Laboratory of Recombinant Animals
Laboratory of Anatomy and Cell Function
Bioresource Laboratory
Laboratory for Structure Analysis
Stem Cell Laboratory



Genome Laboratory



Laboratory of Anatomy and Cell Function



Laboratory of Cytometry and Proteome



Bioresource Laboratory

Institute for Library and Media Information Technology

Mission Statement

The Institute for Library and Media Information Technology was established to collect, organize, manage, provide, and use publications and other essential materials with information on dentistry and medicine required for education, research, and studies at TMDU. It also strives to promote the development of educational media related to dentistry and medicine and the comprehensive use of information technology.

The way of using information in our university has changed greatly in tandem with advances in digitalizing academic data. As a core body for the institute responsible for handling academic information at TMDU, the institute continues changing in tune with the times, ensuring that we have the full spectrum of electronic materials required for research at TMDU, collecting publications that fulfill study requirements, and providing information systems to support the latest teaching methods. We also disseminate research results through research databases and repositories, improve the convenience by implementing the unified user authentication and the institutional composite portal site, and strengthen data security to the maximum extent.

Department of Educational Media Development

The Institute for Library and Media Information Technology's faculty organization: It conducts research related to the development and use of computer simulation-based educational systems, and use of e-learning systems and educational media in medical and dental education.



Lobby of the TMDU Library (M&D Tower, 3F)

Library / Kounodai Branch Library

The TMDU libraries handle the following: Administration of specialized publications and periodicals related to dentistry and medicine (Main library) and liberal arts and sciences publications (Kounodai Branch Library), provision of electronic journals and publications and academic databases, provision of interlibrary loan (ILL) services, full range of services for library visitors and network users, maintenance of the libraries' environments, editing of the University and College of Liberal Arts and Sciences journals, and the curation of rare books.

(Fiscal Year 2013)			
	Main Library		Kounodai Branch Library
	Weekdays	8:30 – 22:00	Weekdays 9:00 – 20:00
	Holidays	10:30 – 18:30	
Library Holdings	217,202		84,891
Floor Space	2,222m ²		280m ²
Seats	301		125
Visitors	144,495		19,967
E-Journals	8,818		—
E-Books	398		—
Data Base	12		—

Information Technology Division

According to the sharp increase of demands on service and security in the academic information and communication infrastructure, Information Technology Division of the Institute for Library and Media Information Technology has been promoting the enhancement of performance and security of the University local area network and local servers, and implementing the unified user authentication and the institutional composite portal site.

In addition, the Division supervises technical aspects of the University WEB site, the individual database for researchers, and the University Repository.

Multimedia Education Division

The division handles the following: ICT backup related to education at TMDU, including management and implementation and support for the use of Web Class, Net Academy, and other forms of e-learning for educational purposes; administration of computer-based testing (CBT) servers; management of PCs used for educational purposes; computer simulation education; data literacy education (document searches, copyrights, and data security); support for the recording, transmission, and simulcast of lecture videos; video content production; and provision of network environments within the libraries.

Student Support and Health Administration Organization

Supporting students and women, promoting a healthy working environment, and planning welfare programs for students.

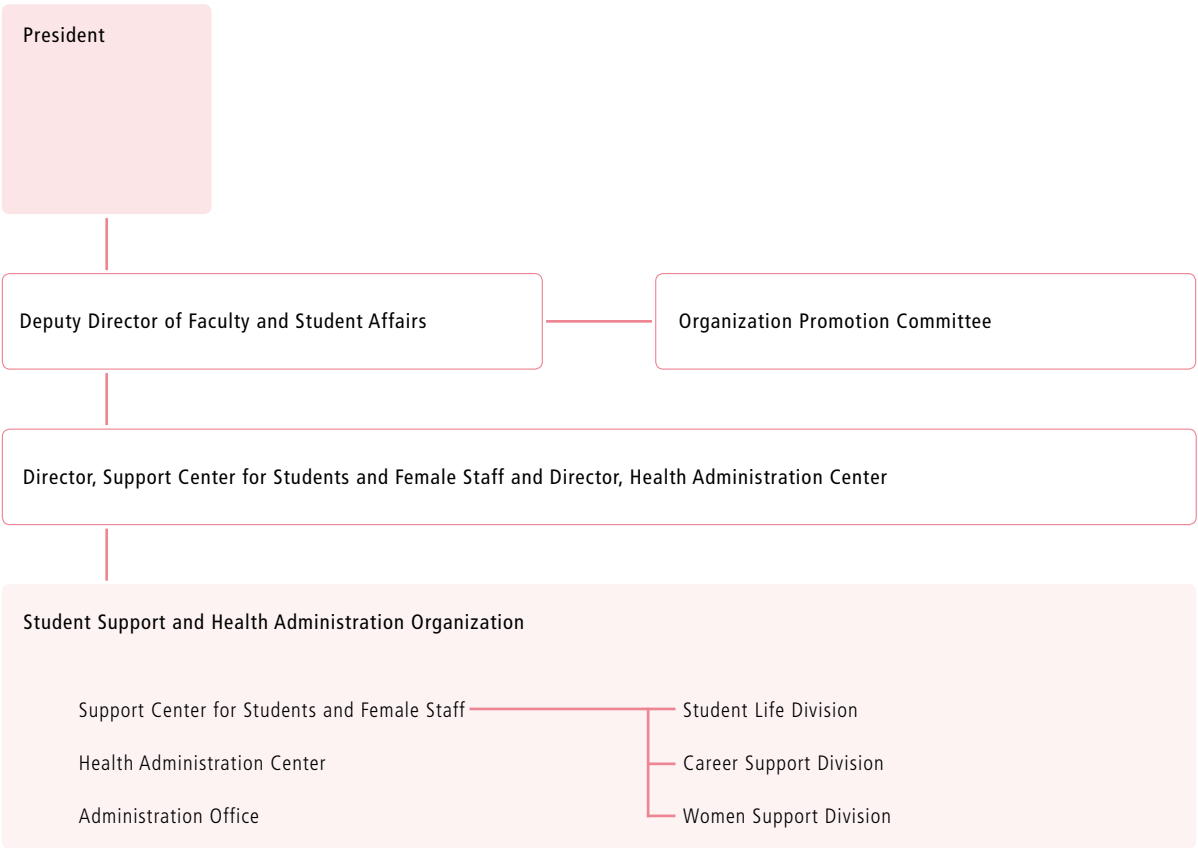
Support Center for Students and Female Staff

The center supports staffs' and students' campus and work life - school work, career placement, mental health issues, harassment, career path, and school performance, as well as considering how to balance work and family.

The center also implements plans for supporting research activities and balancing work and life for female researches, including graduate students.

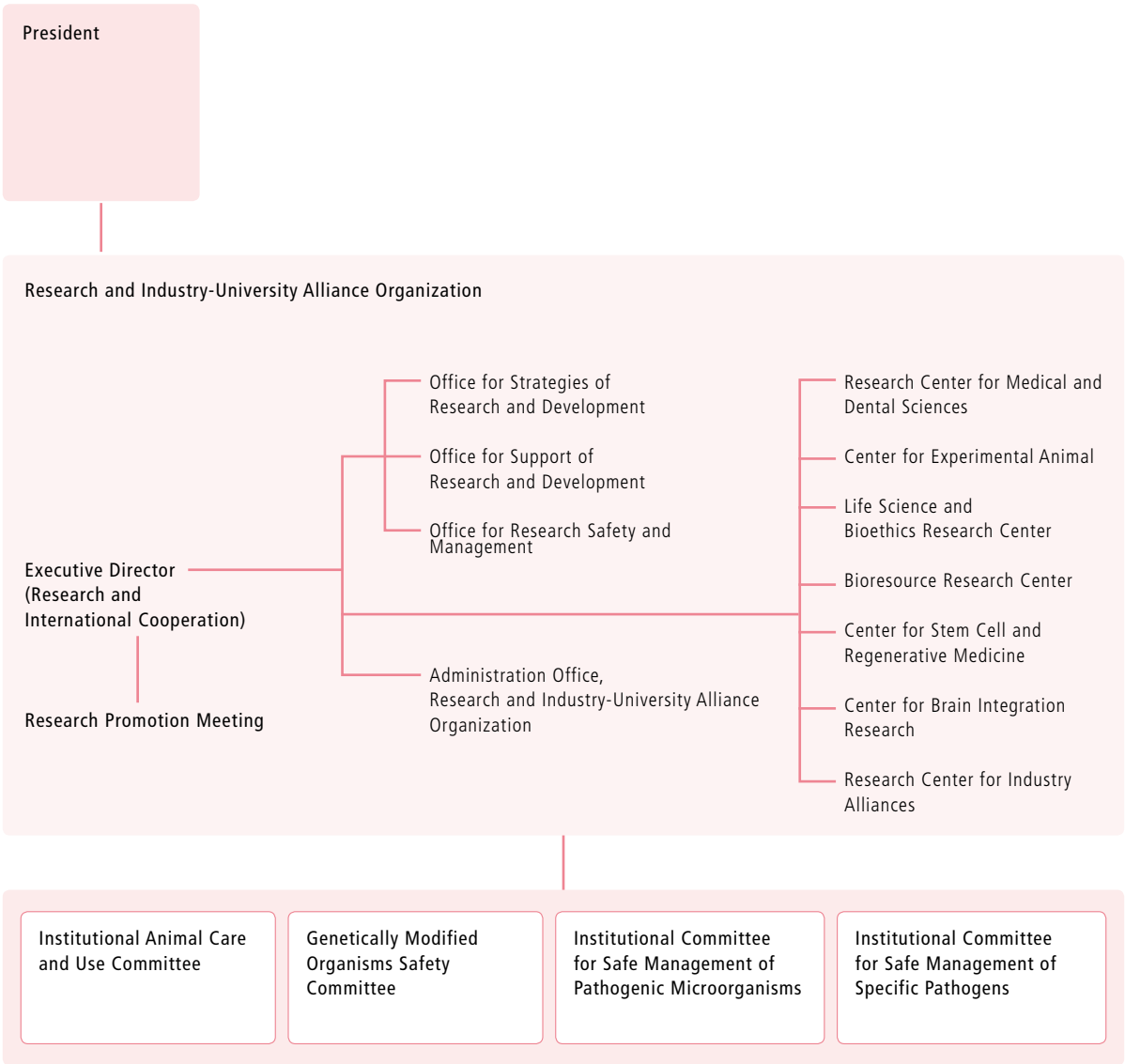
Health Administration Center

Improving healthcare management at the university and promoting the health of students and faculty.



Research and Industry-University Alliance Organization

Supporting the promotion research activity, the planning of research activity and the creation / protection / management /exploitation of intellectual property.



Medical Hospital / Dental Hospital

Mission Statement

The Medical Hospital is committed to providing excellent patient care as well as advanced medical technology to the community. The mission of the Dental Hospital includes developing world-class staff as well as providing excellent dental care tailored to individual patient's needs. The success of these missions requires (1) the practical training of faculty, staff, students, and trainees and (2) innovative scientific research and breakthrough discoveries. Each member of Tokyo Medical and Dental University is devoted to accomplishing our missions by delivering high quality patient care, education, and research while respecting the human spirit.

Our ultimate goal is to provide the highest quality medical care and scientific knowledge in the future, which includes:

1. To provide patients with the best possible medical care and enable them to enjoy their daily life and health to the utmost extent.
2. To reduce the likelihood of illness with the application of new findings in preventive medicine and clinical studies.
3. To improve the cure rate of illness with the swift application of new findings from clinical trials.
4. To educate medical professionals who are sensitive to society's needs.
5. To train medical professionals who can offer clinical

training for students in their internship in the TMDU teaching hospitals and other affiliated hospitals.

6. To develop medical educators and researchers who have vision for the future, and who can advance medical education and practice for coming generations.

In line with these general purposes, we have the following specific aims:

1. To provide a well-organized learning environment with multiple attending teaching staff and a variety of clinical experiences for undergraduate and post-graduate education.
2. To provide patients with safe and high quality medical care.
3. To develop cooperative relations with central hospitals in the Tokyo area, as well as establishing a support system for providing significant medical contributions to the global community.
4. To conduct collaborative studies including clinical trials with other affiliated hospitals, and widen the coverage of high quality medical care.
5. To promote an effective intercollegiate research environment and bring our intellectual resources in cuttingedge medical science to society.
6. To establish efficient and economical management of the hospitals and help bring medical security to the nation.



Medical Hospital (Medical Building A)



Dental Hospital (Dental Building South)

Medical Hospital Beds: 763

Hospital Departments

Department of Internal Medicine

Hematology	Gastroenterology and Hepatology
Rheumatology	Cardiovascular Medicine
Diabetes, Endocrinology and Metabolism	Pulmonary Medicine
Nephrology	Comprehensive Oncology and Palliative Care
Geriatrics	Medical Genetics

Department of Surgery

Esophageal Surgery	Vascular Surgery
Gastric Surgery	Cardiovascular Surgery
Colorectal Surgery	Thoracic Surgery
Hepatobiliary and Pancreatic Surgery	Urology
Breast Surgery	Head and Neck Surgery
	Acute Medicine

Department of Sensory, Orthopedic, and Dermatologic Medicine

Ophthalmology	Plastic and Reconstructive Surgery
Otorhinolaryngology	Orthopaedic Surgery
Dermatology	

Department of Pediatrics, Perinatal, and Women's Medicine

Pediatrics	Perinatal and Women's Medicine
------------	--------------------------------

Department of Neurology, Neurosurgery, Psychiatry, and Anesthesiology

Neurosurgery	Psychiatry
Neurology	Psychosomatic and Palliative Medicine
Endovascular Surgery	Anesthesiology

Department of Radiology

Radiation Oncology	Diagnostic Radiology
--------------------	----------------------

Trauma and Acute Critical Care Medical Center

Department of Insured Medical Care Management

Patient Safety Section

Division of Infection Control and Prevention

Central Clinical Facilities

Pharmacy	Center for Minimally Invasive Surgery
Clinical Laboratory	Heart Rhythm Center
Surgical Center	Clinical Center for Pleasant Sleep
Radiology Center	Sports Medicine Center
Transfusion Medicine	Intractable Disease Treatment
Rehabilitation Center	Advanced Clinical Center for Rheumatic Diseases
Intensive Care Unit	Advanced Clinical Center for Inflammatory Bowel Diseases
Materials Management	Advanced Clinical Center for Urologic Cancers
Fetal and Maternal Medicine Division	Advanced Clinical Center for Rare Neurological Diseases
Pathology	Advanced Clinical Center for Head, Neck and Skull base Tumors
Endoscopy	Cancer Center
Medical Informatics	Health Information Management
Hemopurification	Nutrition Services
General Medicine	
Medical Welfare and Liaison Services Center	
Clinical Research Center	
Professional Development Center	
Hyperbaric Medical Center	
Medical Engineering Center	
Center for Cell Therapy	

Department of Nursing

Dental Hospital Beds: 60 Chair Units: 317

Hospital Departments

Clinics for Dentofacial Growth and Development

Orthodontics	Pediatric Dentistry
--------------	---------------------

Clinics for Conservation of Oral and Maxillofacial Function

Operative Dentistry and Endodontics	Psychosomatic Dentistry Clinic
Periodontics	Temporomandibular Joint Clinic
Orofacial Pain Clinic	

Clinics for Oral and Maxillofacial Rehabilitation

Oral Surgery	Maxillofacial Prosthetics
Maxillofacial Surgery	Sports Dentistry
Prosthodontics	Speech Clinic
Dental Clinic for Sleep Disorders (Apnea and Snoring)	Dental Implant Clinic

Clinics for General Dentistry

Oral Diagnosis and General Dentistry	Special Care Clinic
General Dentistry I	Dysphagia Rehabilitation
General Dentistry II	Fresh Breath Clinic
General Dentistry III	Cleanroom
Ambulatory Anesthesia Service	Oral Health Care
Oral and Maxillofacial Radiology Clinic	Dental Allergy

Central Clinical Facilities

Clinical Laboratory	Center for Dental Information
Dental Laboratory	Center for Development of Devices and Drugs in Dentistry
Section of Clinical Safety Management	Division of Surgical Operation
Section of Infection Control	Dental Ward
Section of Clinical Information Management	Section of Central Supplies
Center for Advanced Dental Clinical Education	
Center for Clinical Cooperation	

Department of Pharmacy

Department of Nursing

Department of Dental Hygiene

Nationwide Joint-use Institutes

Center for Education Research in Medicine and Dentistry

Research on the Model Core Curricula in Medicine and Dentistry, educational evaluation methods, the accreditation in medicine and dentistry based on the global standard and other matters regarding the improvement of the Japanese educational system for physicians and dentists.



Left: Clinical Skills Laboratory I Training of medical procedure using a simulator (e.g. endoscopic surgery)
Right: Clinical Skills Laboratory II Training of dental procedure using a simulator

Joint Institutes for Education and Research

Research Center for Medical and Dental Sciences

Human Gene Sciences Research Division

Research and education of disease related genes.

Instrumental Analysis Research Division

Development, research and education of the technology for advanced measurement and analysis. Promotion of individual utilization of shared analytical equipments and analysis service offer.

General Isotope Research Division

Education and research on radiology and radioisotope medicine.

Advanced Young Researchers Incubation Division

Promoting independent research opportunities for young researchers.

Center for Experimental Animal

Analysis of diseases and studies of animal care for medical use.

International Exchange Center

To integrate affairs related to the international exchange area, and to support the school's promotion of international exchange.

Life Science and Bioethics Research Center

Implementing bioethics education and supporting clinical research planning.

Center for Interprofessional Education

Promoting comprehensive education for health professionals in an aging society by utilizing educational resources in the university. Compiling new undergraduate curricula in medicine and dentistry with an emphasis on a tighter integration between medicine and dentistry, and establishing a system for their effective and efficient management.

Bioresource Research Center

Banking tissue, serum and/or DNA from participants together with the clinical information to facilitate the translational research in the field of personalized medicine as well as future joint research between industry and academia.

Other Institutes

Center for Stem Cell and Regenerative Medicine

Promoting translational researches and developing human resources for regenerative medicine.

Center for Brain Integration Research

To elucidate the functions that integrate the brain and the nervous system so as to help overcome neurological disorders, the Center undertakes comprehensive research at the molecular level, the level of cells and nerves, the level of higher brain functions, and the level of disease. In addition, the Center trains young researchers to conduct such research and thereby contribute to the development of future treatments.

Center for Sports Medicine and Sports Dentistry

Through this Center, the Medical Hospital and the Dental Hospital cooperate closely to provide a multidisciplinary approach to treating diseases and injuries endemic in sports. The information shared between the two hospitals leads to advances in basic and clinical research, which in turn lead to improved diagnosis, treatment, and further research. The Center also supports the development of advanced medical technology in the sports medicine and dentistry areas so as to help top-class athletes prevent injuries and perform to the best of their abilities.

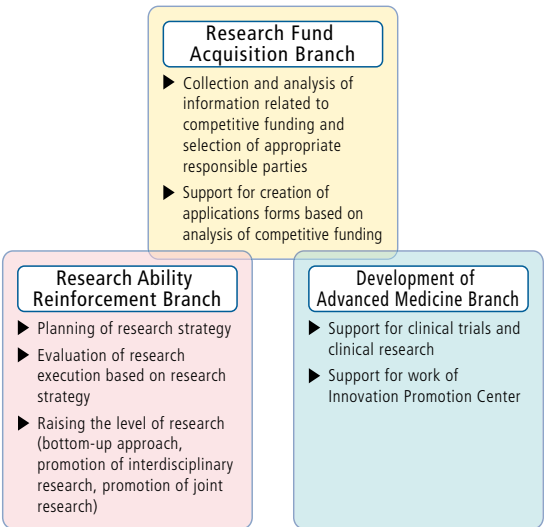


TMDU-URA Office (Research Administration Division)

The Research University Promotion Organization has been established at TMDU under "the program for promoting the enhancement of research universities." The President of TMDU serves as the head of the Organization, which comprises Executive Directors, the head of the TMDU-URA Office (Vice President of University Research Administration), and administrative staff. Its mission is to promote a new flowering of advanced and innovative research at TMDU.

In 2013 the TMDU-URA Office, consisting of the Research Fund Acquisition Branch, Research Ability Reinforcement Branch, and Development of Advanced Medicine Branch, was established within the Research University Promotion Organization. Together with the Executive Director of Research and International Cooperation, it supports the establishment and implementation of strategies aimed at goals such as creating medical innovation, implementing systems for training outstanding young researchers, and globalizing our educational and research initiatives. In this way, the Office is contributing to a strengthening of our research activities that is helping to make TMDU a truly world-class institution.

Overview of TMDU-URA Office Activities



Educational Programs

Program for Leading Graduate Schools

Disaster Nursing Global Leader Degree Program	Program Leader of TMDU	Tomoko INOUE Professor, Graduate School of Health Care Sciences
---	------------------------	--

Program for Promoting Inter-University Collaborative Education

Establishment of DPSC based on the Tokyo Consortium (DPSC: Disease Prevention Science Course)	Program Leader	Hiroyuki KAGECHIKA Vice Dean, Graduate School of Medical and Dental Sciences
Standardization and Nation-wide Implementation of Responsible Conduct of Research Education (CITI Japan Project)	Program Leader of TMDU	Yoshinobu EISHI Vice Dean, Graduate School of Medical and Dental Sciences

Project for Promotion of Global Human Resource Development

Think Globally: Nurturing skills and perspectives of future healthcare professionals	Project Leader	Yujiro TANAKA Executive Director / Executive Vice President
--	----------------	--

Re-Inventing Japan Project

Inter-University Exchange Program toward Medical and Dental Networking in Southeast Asia	Program Leader	Junji TAGAMI Executive Director / Executive Vice President
--	----------------	---

New Paradigms - Establishing Centers for Fostering Medical Researchers of the Future

- (A) Fostering Human Resources for Producing Medical Innovation

Creating Medical Innovators - a Whole-brain Approach to Healthcare	Program Leader	Yoshinobu EISHI Vice Dean, Graduate School of Medical and Dental Sciences
--	----------------	--

Promotion Plan for the Platform of Human Resource Development for Cancer

Training program for cancer therapy promoting specialists of next generation	Program Leader	Yoshinobu EISHI Vice Dean, Graduate School of Medical and Dental Sciences
--	----------------	--

Fostering Global Physicians - Reform of Medical Education by Balancing Basic Research and Clinical Practice

- (A) Fostering Physicians in Basic Research for Coping with Advancing Sophistication of Medicine and Medical Care

Seamless Support for Cultivating World-class Researchers	Program Leader	Yoshinobu EISHI Vice Dean, Graduate School of Medical and Dental Sciences
--	----------------	--

- (C) Implementation of Medical and Dental Education Certification System

Establishment of Accreditation System for Medical Education in Japan based on the Global Standards	Program Leader	Nobuo NARA Director, Center for Education Research in Medicine and Dentistry
--	----------------	---

- (C) Implementation of Medical and Dental Education Certification System

Research on the establishment of dental accreditation system in Japan	Program Leader	Koji ARAKI Professor, Center for Education Research in Medicine and Dentistry
---	----------------	--

Research Programs

The Program for Promoting the Enhancement of Research Universities

TMDU program for promoting the improvement of research university	Program Leader	Ikuo MORITA Executive Director / Executive Vice President
---	----------------	--

Japan Initiative for Global Research Network on Infectious Diseases (J-GRID)

Strategic promotion of collaboratory research on infectious diseases between Ghana and Japan	Program Leader	Nobuo OHTA Professor, Graduate School of Medical and Dental Sciences
--	----------------	---

Science and Technology Research Partnership for Sustainable Development (SATREPS)

Studies of Anti-viral and Anti-parasitic Compounds from Selected Ghanaian Medicinal Plants	Program Leader	Shoji YAMAOKA Professor, Graduate School of Medical and Dental Sciences
--	----------------	--

Research Center Network for Realization of Regenerative Medicine

- Centers for Clinical Application Research on Specific Disease / Organ (Type B)

Center for the development of cultured intestinal stem cell-based mucosal regeneration therapy for inflammatory bowel diseases	Field Leader	Mamoru WATANABE Professor, Graduate School of Medical and Dental Sciences
--	--------------	--

- Projects for Technological Development

Development of novel quality assurance technique applied to tissue-engineered medical products from iPS cells and somatic stem cells	Principal Investigator	Tomohiro MORIO Professor, Graduate School of Medical and Dental Sciences
--	------------------------	---

- Highway Program for Realization of Regenerative Medicine [Field "B"] Projects targeting clinical study in the medium to long term

Meniscus Regeneration by Mesenchymal Stem Cells Derived from Synovium	Principal Investigator	Ichiro SEKIYA Director, Center for Stem Cell and Regenerative Medicine
---	------------------------	---

Strategic Research Program for Brain Sciences

- Understanding of Molecular and Environmental Bases for Brain Health

Elucidation of Molecular Bases, Environmental Factors and their Organization in the Brain, Enabling Lifelong Mental and Physical Health			
Field Leader	Hidehiro MIZUSAWA Project Professor	Investigator	Kohichi TANAKA Professor, Medical Research Institute
Investigator	Hitoshi OKAZAWA Professor, Medical Research Institute		

A3 Foresight Program

Epigenetic Signatures in Gastric Carcinogenesis					
Principal Investigator	Yoshimitsu AKIYAMA Junior Associate Professor, Graduate School of Medical and Dental Sciences	Chinese PI	Deng Dajun Professor, Department of Aetiology, Peking University School of Oncology, China	Korean PI	Kim Woo Ho Professor, Department of Pathology, Seoul National University College of Medicine, Korea

Core-to-Core Program

- A. Advanced Research Networks

Center of international research platform for biomedical science and drug discovery against intractable diseases

Core Institutel	Research and Industry-University Alliance Organization	Coordinator	Hiroyuki KAGECHIKA Professor, Institute of Biomaterials and Bioengineering
-----------------	--	-------------	---

JST Strategic Basic Research Programs (CREST)

	Principal Investigator
Novel Mechanisms of Allergy and its Regulation	Hajime KARASUYAMA Professor, Graduate School of Medical and Dental Sciences
Regulation of Inflammatory Time Axis at the RNA Level	Hiroshi ASAHARA Professor, Graduate School of Medical and Dental Sciences
Development of molecular design and its clinical application of heteroduplex oligonucleotide drug	Takanori YOKOTA Professor, Graduate School of Medical and Dental Sciences
Analysis of Molecular and Cellular Basis of Synapse-Glia-D-Serine System Dysfunction in Schizophrenia toward the Development of Novel Strategies for its Diagnosis and Treatment	Toru NISHIKAWA Professor, Graduate School of Medical and Dental Sciences
Research on Developing Diagnosis and Therapy of Purkinje Cell Degeneration Based on its Molecular Pathogenesis	Hidehiro MIZUSAWA Project Professor
Therapeutics development targeting transcription and DNA damage repair	Hitoshi OKAZAWA Professor, Medical Research Institute
Elucidation of Molecular and Cellular Basis of Synapse-Glia System Dysfunction in Schizophrenia toward Creation of Novel Strategies for its Diagnosis and Treatment	Kohichi TANAKA Professor, Medical Research Institute
Synthesis of small molecules for drug discovery targeting the epigenome	Takamitsu HOSOYA Professor, Institute of Biomaterials and Bioengineering
Study on activation of fibroblasts in rheumatoid arthritis and other rheumatic diseases	Hitoshi KOHSAKA Professor, Graduate School of Medical and Dental Sciences
Homeostatic Regulation by Bones through the Inter-Organ Metabolic Network	Shu TAKEDA Professor, Graduate School of Medical and Dental Sciences
Exploring the principle of tissue organization based on the diversity and heterogeneity of cellular dynamics	Kenji YASUDA Professor, Institute of Biomaterials and Bioengineer
Development of analytic methodology for comprehensive gene expression profiling using next generation sequencing and exon array	Hiroshi TANAKA Professor, Medical Research Institute

Other Programs

Accelerating Project for Overseas Development of Japanese Medical Technologies and Services

Overseas research project for distributing Japanese colorectal cancer screening methods	Project Leader	Yoshinobu EISHI Vice Dean, Graduate School of Medical and Dental Sciences
---	----------------	--

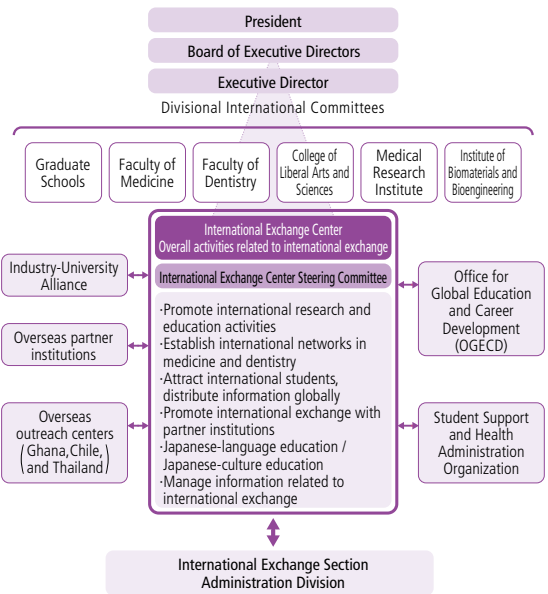
International Exchange

International Exchange Center

In April 2009, the TMDU International Student Center (ISC) was reorganized, given many new responsibilities, and rechristened as the “International Exchange Center”, or IEC. One of the newly assumed tasks of the IEC is to facilitate and coordinate the international activities of the various divisions of the university. While each division of TMDU has been actively engaged in international exchange in the past decade, it was decided that it was necessary to set up unified procedures and promote coordination for the most effective implementation of our international endeavors. The IEC is thus expected to set up a system which will enable the leadership of the university to readily use and refer to necessary information on international activities and former international students as part of their decision-making.

Encouraging promising students and young researchers to attend TMDU is another important activity of the IEC. We organized our first International Summer Program (ISP) in September 2009, and have held ISPs annually ever since. The number of ISP participants who have become graduate students at TMDU is steadily increasing.

The IEC will continue to support and implement an array of activities to promote TMDU’s international profile.



Ghana-Tokyo Medical and Dental University Research Collaboration Program

Role of TMDU for development of Medical cooperation between Japan and West-African subregion

Dr. Hideyo Noguchi, the eminent Japanese microbiologist, died of yellow fever in 1928 in Ghana. His activities are the basis of the tight collaboration between Ghana and Japan, especially in the field of medical sciences. Since the establishment in 2008, the Ghana-TMDU Research Collaboration Center has been expected to have more profound roles in expanding research exchanges between Japan and west Africa.

Soon after the Center was established, TMDU dispatched two experts, Professors Ido and Suzuki, to the Ghana–TMDU Center to implement research on HIV/AIDS, African trypanosomiasis and on malaria-transmitting mosquitoes. Research on mosquito-transmitted diseases was added to our project in 2012, including an ecological analysis of mosquitoes that transmit viral hemorrhagic diseases and several virological / epidemiological studies on viral hemorrhagic diseases such as Lassa fever and yellow fever. We are mindful that yellow fever killed Dr. Noguchi 85 years ago in Ghana, and we are now doing research on the disease.

The recent notable episodes of endemic diseases in Ghana

were reemergence of human African trypanpsomiasis and the sudden outbreak of Ebola hemorrhagic fever, although Ebola epidemic is still limited in the neighboring countries. Those are dangerous infectious diseases, and information of those diseases should be shared both in Ghana and Japan. Ghana-TMDU Collaboration Center should take a role to release reliable information to the World, and the tight collaboration scheme is the basis of the responsibility. TMDU dispatches medical students to Ghana every year to experience medical issues in Africa. Under such situation, it is expected that students are motivated and realize the importance of research on infectious diseases.

Together with the above activities, TMDU was awarded to have a program to invite foreign PhD students under the Governmental scholarship from 2014. The Center is expected to promote more intense medical exchanges between Ghana and Japan, and we believe the Ghana-TMDU Research Collaboration Center will prove to be a gate for mutual collaboration in medical sciences and human resource development between Japan and Africa.



Asian-African Research Forum 2014 in Sendai



Joint coordinating meeting of TMDU-NMIMR project to make information sharing and discussion of the progress

Latin American Collaborative Research Center (LACRC) Tokyo Medical and Dental University, Santiago, Chile

TMDU Colorectal Cancer Screening Project: Expanding from Santiago to Other Cities in Chile, and from Chile to Ecuador, Paraguay, and Brazil

The Latin American Collaborative Research Center (LACRC) was established in 2010 by an agreement between TMDU, the Ministry of Health of Chile, and Clinica Las Condes (CLC), the most advanced hospital in Chile.

Three TMDU professionals — an endoscopist, a pathologist, and a molecular biologist — are concentrating their work at LACRC on advancing a national colorectal cancer screening project and cancer research.

Until 2013, 7,500 participants from three cities, including Santiago, Valparaíso, and Punta Arenas, were involved in this screening program and cancer was detected in 60 individuals. Furthermore, other cities, including La Serena (Coquimbo), Osorno, Antofagasta, will join this screening project in 2014. The endoscopists who will participate in the national project will be trained at the Chilean-Japanese Institute for Digestive Diseases of Hospital Clínico San Borja Arriarán in Santiago, and TMDU will give each trainee that successfully completes the course a certificate that will allow participation in the relevant national program.

In a related project, TMDU has been collaborating with the Ministry of Public Health of Ecuador since 2012. Every August, TMDU professors visit Quito and provide a one-day TMDU-sponsored conference on digestive diseases. In addition, LACRC staff members visit Quito several times a year to provide a one-week training course at the Pablo Arturo Suarez national hospital. Other than Ecuador, other Latin American countries including Paraguay and Brazil, are preparing same project and TMDU will support them.

Another important connection between TMDU and South America is that six 4th year TMDU medical students are sent each year to CLC and the University of Chile for a 5-month internship. These internships began in 2010, and a total of 22 students have thus stayed in Chile as researchers during their project semester. To be sure, the students enjoyed the culture, food, and climate that Chile has to offer as well as the work they were able to do in the lab.



Left: Directors of CLC visited TMDU
Middle: A colonoscopy training at Hospital Clínico San Borja Arriarán (Santiago, Chile) by Dr. OKADA, a visiting doctor from TMDU
Right: A training of the procedure for pathologic diagnosis at Pablo Arturo Suarez Hospital (Quito, Ecuador) by Dr. Kawachi, a visiting doctor from TMDU

CU-TMDU Research and Education Collaboration Center in Thailand

Student Exchange Programs between CU and TMDU

In the fiscal year of 2013, two medical and ten dental undergraduate students and three postgraduate students, a total of fifteen students from Chulalongkorn University (CU), visited Tokyo Medical and Dental University (TMDU), and participated in medical/dental training programs. From TMDU, three medical and twenty-two dental undergraduate students and fourteen postgraduate students, a total of thirty-nine students, participated in medical research projects or dental training programs in CU. Moreover forty-eight students and staff from CU and TMDU participated in a stay-over Global Retreat at the Rayong district, Thailand. They all enjoyed academic and cultural exchange programs and deepened their mutual understanding and relationship.

Students engaged in basic research, group discussion and presentation, attended the English class, observed CU university hospital and private clinics, and experienced community health activities. In the cultural exchange program in the Global Retreat, TMDU students held a Japanese tea ceremony and danced Bon-odori wearing the traditional Yukata costumes. Meanwhile, the Thai students performed traditional Thai dance. Continuation of these young student exchange programs will

be expected to establish a medical and dental network in Southeast Asia.

And "Overseas open health seminar" was held on May 31, 2014 with the Bangkok Hospital. We also had the overseas open health seminar and the pediatric dentistry special seminar.



Left: TMDU undergraduate students in a dental training program in CU
Right: A Overseas open health seminar by Prof. MIYAZAKI from TMDU



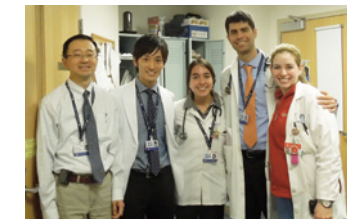
Alliance for Medical Education between Tokyo Medical and Dental University and Partners HealthCare International, LLC.

TMDU has had an alliance with Harvard Medical International since 2002 for medical education; since 2012, Partners HealthCare International (PHI). One of the chief missions of this alliance has been to create a new model of medical education in Japan in order to meet the various needs and challenges we face in the 21st century.

Partnering with PHI has allowed our students and faculty access to the educational resources and expertise of Harvard Medical School and Harvard School of Dental Medicine. PHI and TMDU have organized a "leadership in education" program every year for the past 12 years that has been tailored to tackle ongoing problems or projects at TMDU. A total of 143 faculty members have participated in the programs and planned, developed, and implemented a wide variety of new learning methodologies into TMDU's curricula. These include, but are not limited to, hybrid programs integrating basic and clinical sciences, patient-doctor courses, participatory clinical clerkship, and medical and dental

integrated learning.

This alliance with PHI also gave TMDU students opportunities to participate in clinical clerkships at Harvard Medical School affiliated hospitals. Since 2004, four to ten highly motivated and qualified students have been selected every year and, after six to nine months of preparatory training, have spent two to three months doing clerkships with Harvard students. Studying together with Harvard students and others from high-tier medical schools throughout the world, TMDU students have acquired sophisticated clinical skills and approaches, had hands-on learning experience of the American healthcare system, and acquired a global mindset.



Student exchange program between Faculty of Medicine, Tokyo Medical and Dental University and Faculty of Medicine, Imperial College of Science Technology and Medicine

Imperial College London

Imperial College London is a science-based university founded in 1907, which has consistently rated among the top three universities of the United Kingdom and in the world's top 10 by various world university rankings. The exchange program between TMDU and Imperial College London was launched in 2004, and four to five medical students from each institution have travelled and engaged in three- to five-month research activities every year. The program has been very productive with participants gaining valuable experiences, leading this program to become very popular and competitive in both institutions.

From Tokyo to London

Each year, four to five highly motivated and qualified fourth-year TMDU medical students have been selected and spent the entire five months of their project semester period at Imperial College London. By engaging in research at world renowned labs and working with researchers and students with diverse cultural and educational backgrounds, students learned methods in

scientific inquiry, acquired/sophisticated logical and critical thinking skills, information and data acquisition skills, academic writing and communicating skills, understood cultural sensitivity, and built networks with current and future world leaders in health sciences.

From London to Tokyo

As partial fulfillment of the BSc degree at Imperial College London, four to five medical students per year have come and engaged in research in various labs at TMDU. Participants not only enjoyed learning the methods of scientific inquiry and research, but also enjoyed learning Japanese culture and networking with TMDU faculty staff and students.



International Summer Program, ISP

To introduce TMDU to the world and attract top international students, especially from Asia, TMDU has held an annual International Summer Program (ISP) from 2009. Each year, the ISP includes lectures by invited overseas leading researchers and TMDU professors, an international symposium, and poster presentations by invited participants as well as TMDU international students. The theme of the fifth ISP (August 26–29, 2013) was Biomaterials: From the Laboratory to the Clinic. The ISP2013 Working Group was chaired by Prof. Kazuo TAKAKUDA. Due to the leadership of Prof. TAKAKUDA and the support of the members of Working Group, the invited speakers, and the TMDU speakers, ISP2013 was successfully held. Twenty-five participants from 16 Asian countries and regions were invited to ISP2013. We are glad to report that several students who participated in the International Summer Program are now TMDU graduate students. As ISP has evolved, the participants have been given more opportunities and a greater amount of time to visit labs and communicate face-to-face with potential future advisers at TMDU. TMDU professors were very keen to meet invited students even though ISP was held during the summer holidays. The opportunity for TMDU and ISP participants to get to know each other has helped us recruit excellent international students. The number of invited students for ISP who were later admitted to TMDU is increasing.

ISP2009	76 applicants, from 15 countries or regions 35 invited participants, from 11 countries or regions
ISP2010	96 applicants, from 16 countries or regions 26 invited participants, from 14 countries or regions
ISP2011	69 applicants, from 16 countries or regions 23 invited participants, from 14 countries or regions
ISP2012	68 applicants, from 16 countries or regions 24 invited participants, from 10 countries or regions

ISP2014, the sixth annual ISP, was held August 25th - 28th 2014 under the theme of Ageing and Metabolism. Prof. Yoshihiro OGAWA of Molecular Endocrinology and Metabolism at the Tokyo Medical and Dental University Graduate School of Medical and Dental Sciences was the ISP2014 Committee Chair. As in previous years, ISP2014 will provide the opportunity for excellent exchanges between the invited speakers, TMDU professors and the ISP participants. Also, the “Special Selection for ISP International Student PhD Program” will be held for the third year. Under this program, ISP2014 participants will be able to take an entrance examination for TMDU’s Graduate School the day after ISP2014 finished (August 29).

ISP2013 Invited Students / Researchers

Country / Region	Applicants			Invited participants		
	M	F	Total	M	F	Total
Vietnam	5	3	8	1	1	2
China	9	18	27	1	4	5
Bangladesh	1	4	5		1	1
Thailand	3	2	5		1	1
Nepal		1	1		1	1
Malaysia		1	1		1	1
Pakistan	1		1	1		1
India	4	1	5	2		2
Mongolia		2	2			
Korea	2		2	2		2
Cambodia		1	1		1	1
Myanmar	3	5	8	1	1	2
Indonesia	1	4	5		2	2
Taiwan	1		1	1		1
Laos	1		1	1		1
Bhutan		1	1		1	1
Singapore	1		1	1		1
Total	32	43	75	11	14	25



ISP2013 Social Hour (M&D Tower, Faculty Lounge, August 28th, 2013)

Undergraduate Overseas Studying Awards

To cultivate professionals with sensitivity and international awareness, TMDU offers Undergraduate Overseas Studying Awards to excellent undergraduate students who wish to

undergo overseas training. This award was initiated in 2006 and 78 students, 12 in 2013, have taken advantage of this opportunity to study abroad.

2013 Undergraduate Overseas Studying Awards

Area		Host Institution		Number of students
Faculty of Medicine School of Medicine	4 th year	United States of America	• University of California, San Diego • Massachusetts General Hospital, the Cutaneous Biology Research Center	3
		Australia	• The Australian National University	
Faculty of Medicine School of Health Care Sciences	3 rd year	Finland	• Seinäjoki University of Applied Sciences	4
Faculty of Dentistry School of Dentistry	6 th year	UK / Switzerland	• King's College London, etc. (Private dental clinics)	3
	4 th year	United States of America	• Harvard School of Dental Medicine	
		Czech Republic	• Masaryk University	
Faculty of Dentistry School of Oral Health Care Science	3 rd year	Australia	• The University of Sydney and The University of Melbourne	2
		Sweden	• The University of Gothenburg	

2013 Postgraduate Overseas Studying Awards

To cultivate leading researchers and highly talented medical personnel, the Postgraduate Overseas Studying Awards program was initiated in 2011. This award is presented to postgraduate students who have achieved excellent research in their field of study and are expected to be excellent researchers in the future.

2013 Postgraduate Overseas Studying Awards






Area	Host Institution
Graduate School of Medical and Dental Sciences	United Kingdom • Imperial College London
	Australia • Australian National University
	United States of America • West Virginia University • University of California, San Francisco • Medical University of South Carolina
Graduate School of Health Care Sciences	Sweden • Umea University
	United States of America • National Institute of Nursing Research • MD Anderson Cancer Center Texas Medical Center

Studying Abroad during Project Semester

Project Semester is aimed to cultivate fundamental skills that are necessary for medical doctors who have a scientific perspective. The 5-month program is open to undergraduate medical school students who have completed major subjects and experiments and is held in the second semester of the 4th year.

During Project Semester, students study and conduct research at TMDU and overseas collaborating institutions, such as Imperial College, the University of Chile and Clinica Las Condes, Chulalongkorn University, and the Noguchi Memorial Institute for Medical Research, University of Ghana.

2013 Students Studying Abroad during Project Semester

Imperial College (UK)		5
University of Chile and Clinica Las Condes (CLC) (Chile)		4
Chulalongkorn University (Thailand)		3
Noguchi Memorial Institute for Medical Research, University of Ghana (Ghana)		3
Others: Institutions in United States of America, Australia, and Korea		8

Tokyo Medical and Dental University
and Partners Healthcare International
— Alliance for Medical Education

United States of America
• Partners HealthCare International

Overseas Affiliated Universities / Inter- Faculty Agreements

Graduate School of Medical and Dental Sciences (Medical Division) / Graduate School of Health Care Sciences / Faculty of Medicine

Finland
• Seinajoki University of Applied Sciences
• University of Tampere Department of Nursing Science
United States of America
• University of Washington School of Nursing
• University of Colorado Denver College of Nursing
United Kingdom
• Imperial College London Faculty of Medicine
• The University of Sheffield School of Nursing and Midwifery

Thailand
• Faculty of Medicine and Faculty of Allied Health Sciences, Chulalongkorn University
• Faculty of Medicine Siriraj Hospital Mahidol University
• National Cancer Institute, Ministry of Public Health
Kazakhstan
• S.D.Asfendiyarov Kazakh National Medical University
Ghana
• Noguchi Memorial Institute for Medical Research

Overseas Affiliated Universities / Inter- University Agreements

Thailand
• Chulalongkorn University
Chile
• Clinica Las Condes and the Ministry of Health of Chile
Ecuador
• Ministry of Public Health, Ecuador
Paraguay
• Ministry of Health of Paraguay and Clinica Las Condes

Taiwan
• National Yang Ming University
• Taipei Medical University, College of Medicine
• School of Medicine, National Defense Medical Center
• National Taiwan University, College of Medicine
China
• Tianjin Medical University, Cardiovascular Institute
Denmark
• University of Copenhagen, Graduate School of Pharmaceutical Science
Chile
• Faculty of Medicine, Universidad de Chile
• Faculty of Medicine, Austral University
Korea
• Seoul National University College of Medicine
Australia
• John Curtin School of Medical Research, Australian National University
• Medical School, Australian National University

Graduate School of Medical and Dental Sciences (Dental Division) / Faculty of Dentistry

Korea
• College of Dentistry, Seoul National University
• School of Dentistry, Kyungpook National University
• School of Dentistry, Chonnam National University
Thailand
• Faculty of Dentistry, Chulalongkorn University
• Faculty of Dentistry, Mahidol University
• Faculty of Dentistry, Chiang Mai University
• Faculty of Dentistry, Prince of Songkla University
• Faculty of Dentistry, Khon Kaen University
• Faculty of Dentistry, Naresuan University
• Faculty of Dentistry, Srinakharinwirot University
China
• College of Stomatolgy, Jilin University
• Stomatology College of Dalian Medical University
• School of Stomatology, Peking University
• School of Stomatology, Capital Medical University
• Tongji University, School of Stomatology
• Inner Mongolia Medical College
• West China School of Stomatology Sichuan University

Taiwan
• College of Oral Medicine, Taipei Medical University
• School of Dentistry, College of Medicine, National Taiwan University
• College of Dental Medicine, Kaohsiung Medical University
• School of Dentistry, National Defense Medical Center

Indonesia
• Faculty of Dentistry, University of Indonesia
Singapore
• Faculty of Dentistry, National University of Singapore
Malaysia
• Faculty of Dentistry, University of Malaya
Denmark
• School of Dentistry, Faculty of Health Sciences, University of Copenhagen
Myanmar
• Institute of Dental Medicine, Yangon
Vietnam
• University of Odonto-Stomatology, Hanoi
• Faculty of Odonto-Stomatology, The University of Medicine and Pharmacy at Ho Chi Minh City
Mongolia
• School of Dentistry, Health Sciences University of Mongolia
Sri Lanka
• Faculty of Dental Sciences, University of Peradeniya
Cambodia
• Faculty of Odonto-Stomatology, University of Health Sciences, Phnom Penh Cambodia

Laos
• Faculty of Medical Sciences, National University of Laos

United Kingdom
• King's College London Dental Institute
Czech Republic
• Masaryk University, Faculty of Medicine
United States of America
• School of Dental Medicine, University of Pennsylvania

• Harvard School of Dental Medicine
• School of Dentistry, University of North Carolina at Chapel Hill
• School of Dentistry, University of California San Francisco
Canada
• Faculty of Dentistry, McGill University

Institute of Biomaterials and Bioengineering

United Kingdom
• Bioengineering Unit, University of Strathclyde
• Interdisciplinary Research Centre in Biomedical Materials and Science, Queen Mary and Westfield College, University of London
Sweden
• Department of Biomedical Engineering, Linköping University
Poland
• Institute of Biocybernetics and Biomedical Engineering and International Center of Biocybernetics, Polish Academy of Science
Korea
• Institute for Biomaterials Research and Development, Kyungpook National University
China
• School of Stomatology, Peking University

Medical Research Institute

Singapore
• Oncology Research Institute, National University of Singapore
Korea
• Institute of Molecular Biology and Genetics, Seoul National University

Biomedical Science PhD Program / Medical Research Institute

Poland
• Medical University of Gdansk
Germany
• Deutsches Rheuma-Forschungszentrum Berlin
• Humboldt-Universität zu Berlin
• Faculty of Biosciences, University of Heidelberg
• The Spemann Graduate School of Biology And Medicine, University of Freiburg
United Kingdom
• Univesity of Dundee
China
• Peking Union Medical College
• Health Science Center China Medical University
• Shanghai Center for Bioinformation Technology
Vietnam
• University of Hanoi Medical University, Hanoi

Number of International Students

(as of May 1, 2014)

Country / Area		Graduate Students					Undergraduate Students				Research Students				Japanese Language Course Students	Subtotal		Total	
		Medical and Dental Sciences		Health Care Sciences		Biomedical Science PhD Program	Faculty of Medicine		Faculty of Dentistry		Medical and Dental Sciences		Health Care Sciences						International Exchange Center
Asia	India	3	1													3	1	4	
	Indonesia	2										1				2	1	3	
	Korea		2					1	1							1	3	4	
	Cambodia	2														2	0	2	
	Sri Lanka	1														1	0	1	
	Thailand	16	3					2						1	1	19	4	23	
	Taiwan		7					1								0	8	8	
	China	20	45		1	1	1	2		4		11				21	64	85	
	Nepal	2	4													2	4	6	
	Bangladesh	6	2													6	2	8	
	Philippines	2														2	0	2	
	Vietnam	6	1													6	1	7	
	Malaysia		2													0	2	2	
	Myanmar	3	6									2	5			5	11	16	
	Mongolia	3	1												1	4	1	5	
Africa	Egypt		1			1									1	1	2	3	
	Ghana	1														1	0	1	
	Sudan	1														1	0	1	
	Libya		1													0	1	1	
The Middle and Near East	Afghanistan	1														1	0	1	
	Yemen	3														3	0	3	
	Iran		1													0	1	1	
	Saudi Arabia		5									1				0	6	6	
	Turkey	1														1	0	1	
	Jordan	2														2	0	2	
Latin America	Haiti														1	1	0	1	
	Brazil	2	1												1	3	1	4	
	Peru		1													0	1	1	
	Mexico		1													0	1	1	
North America	Canada					1									0	1	1		
Europe	Kyrgyzstan	1														1	0	1	
	Spain	1														1	0	1	
	Serbia											1				0	1	1	
	Belarus	1														1	0	1	
	Poland		1													0	1	1	
Subtotal		80	86	0	1	1	3	2	4	1	4	2	19	0	1	5	91	118	209
Total		Government Expense		Private Expense			Government Expense		Private Expense		Government Expense		Private Expense		Government Expense	209			
		81		90			3		8		2		20		5				
		171			11			22			5								

Number of Staff Members

(as of May 1, 2014)											
	Director	Academic Staff				Subtotal	Other Staff				Total
		Professor	Associate Professor	Junior Associate Professor	Assistant Professor		Clerk	Co-medical	Nurse	Subtotal	
President	1										1
Executive Director	5 (1)										5 (1)
Auditor	2 (1)										2 (1)
Internal Audit Office							3			3	3
Administration Bureau							144			144	144
Graduate School of Medical and Dental Sciences (Medical)		42	28	30	67	167					167
Graduate School of Medical and Dental Sciences (Dental)		29	28	23	83	163					163
Graduate School of Health Care Sciences		17	8	2	14	41					41
Faculty of Medicine							18	5		23	23
Medical Hospital		1	8	37	111	157	92	224	720	1,036	1,193
Faculty of Dentistry		5	1	3	3	12	35	3		38	50
Dental Hospital			4	14	20	38		81	55	136	174
College of Liberal Arts and Sciences		9	10		2	21	6			6	27
Institute of Biomaterials and Bioengineering		12	9	1	17	39	5			5	44
Medical Research Institute		20	22	2	24	68	9			9	77
Institute for Library and Media Information Technology		1			1	2	21			21	23
Student Support and Health Administration Organization		1	1		2	4	11		1	12	16
Health Administration Office for Employees					1	1	3	1		4	5
Research and Industry-University Alliance Organization		1				1	13			13	14
Center for Education Research in Medicine and Dentistry		2	1	1		4					4
Research Center for Medical and Dental Sciences		1	3		1	5	2			2	7
Center for Experimental Animal		1		1	2	4	1			1	5
International Exchange Center		1	3			4	10			10	14
Life Science and Bioethics Research Center		1		1	2	4					4
Center for Interprofessional Education			2	1		3					3
Bioresource Research Center		1				1					1
Center for Stem Cell and Regenerative Medicine		2			3	5					5
Center for Brain Integration Research			2			2					2
Hospital Administration Planning Division							9			9	9
Public Relations Division							6			6	6
Policy Planning Office							3			3	3
Number of Staff Members	8 (2)	147	130	116	353	746	391	314	776	1,481	2,235 (2)

*Note: The numbers in parentheses () indicate part-time directors.

Number of Graduate Students

Graduate School of Medical and Dental Sciences															(as of May 1, 2014)				
Specialized Courses	Capacity of Admission	Total Capacity	Master's Program						Doctoral Program						Total				
			1st year		2nd year		Subtotal		1st year		2nd year		3rd year				4th year		Subtotal
Medical and Dental Sciences	—	—	0	0	1	0	1	0										1	0
Medical and Dental Sciences (MMA Course)	—	—	0	0	0	0	0	0										0	0
Medical and Dental Science and Technology	95	190	91	37	103	59	194	96										194	96
Medical and Dental Science and Technology (MMA Course)	15	25	19	8	12	2	31	10										31	10
Oral Health Sciences	—	45							0	0	1	1	10	6	45	24	56	31	31
Maxillofacial and Neck Reconstruction	—	26							0	0	1	1	0	0	32	10	33	11	11
Bio-Matrix	—	15							0	0	0	0	1	0	15	5	16	5	5
Public Health	—	19							0	0	0	0	7	3	41	16	48	19	19
Gerontology and Gerodontology	—	16							0	0	0	0	1	0	29	15	30	15	15
Comprehensive Patient Care	—	9							0	0	0	0	1	1	17	11	18	12	12
Cognitive and Behavioral Medicine	—	17							0	0	0	0	0	0	16	6	16	6	6
Bio-Environmental Response	—	15							0	0	0	0	2	0	13	8	15	8	8
Systemic Organ Regulation	—	29							0	0	0	0	2	1	51	18	53	19	19
Advanced Therapeutic Sciences	—	23							0	0	0	0	2	1	36	11	38	12	12
Medical and Dental Sciences	189	567							248	102	238	105	215	80			701	287	287
Life Science and Technology	25	75							17	7	13	3	8	1			38	11	11
Subtotal	324	1,071	110	45	116	61	226	106	265	109	253	110	249	93	295	124	1,062	436	542

Graduate School of Health Care Sciences																			
Specialized Courses	Capacity of Admission	Total Capacity	Master's Program						Doctoral Program						Total				
			1st year		2nd year		3rd year		4th year		5th year						Subtotal		
Nursing Innovation Science	13	13	15	12													15	12	12
Cooperative Doctoral Course in Disaster Nursing	2	2	3	3													3	3	3

Specialized Courses	Capacity of Admission	Total Capacity	Master's Program						Doctoral Program						Total			
			1st year		2nd year		Subtotal		1st year		2nd year		3rd year				Subtotal	
Comprehensive Health Nursing Sciences	M D 8	M D 17 24	0	0	19	17	19	17	6	5	15	13	29	25	50	43	69	60
Biomedical Laboratory Sciences	M D 12 6	M D 24 18	15	14	14	12	29	26	10	6	2	2	7	2	19	10	48	36
Subtotal	D M D 15 12 6	D M D 15 41 42	18 15	15 14	0 33	0 29	0 48	0 43	0 16	0 11	0 17	0 15	0 36	0 27	18 69	15 53	18 117	15 96

Biomedical Science PhD Program																		
Specialized Courses	Capacity of Admission	Total Capacity	Master's Program						Doctoral Program						Total			
			1st year		2nd year		Subtotal		1st year		2nd year		3rd year				Subtotal	
Bioinformatics	—	M D —	0	0	0	0	0	0	0	0	0	0	3	0	3	0	3	0
Functional Biology	—	M D —	0	0	0	0	0	0	0	0	0	0	7	1	7	1	7	1
Subtotal	—	M D —	0	0	0	0	0	0	0	0	0	0	10	1	10	1	10	1

	Capacity of Admission	Total Capacity	Master's Program						Doctoral Program						Total				
			1st year		2nd year		Subtotal		1st year		2nd year		3rd year				4th year		Subtotal
Total	365	1,169	125	59	149	90	274	149	281	120	270	125	295	121	295	124	1,159	505	654

*Note: The numbers in red indicate female students.

Research Students			(as of May 1, 2014)	
Graduate Schools	Number of Students	Female Students (in number)		
Graduate School of Medical and Dental Sciences	192	95		
Graduate School of Health Care Sciences	3	2		
Total	195	97		

Research Students (as of May 1, 2014)

Graduate Schools	Number of Students	Female Students (in number)
Graduate School of Medical and Dental Sciences	192	95
Graduate School of Health Care Sciences	3	2
Total	195	97

Number of Undergraduate Students

Faculty of Medicine (as of May, 1, 2014)

	Capacity of Admission	Total Capacity	1st year		2nd year		3rd year		4th year		5th year		6th year		Total	
School of Medicine	101 {5}	607	104	28	116 (5)	32 (2)	110 (5)	36 (2)	103 [3]	33 [1]	100 [5]	33	91 [6]	28 [1]	624 [14] (10)	190 [2] (4)
School of Health Care Sciences	90	360	91	82	91	82	100	94	87	76					369	334
Nursing Science	55	220	56	54	52	59	59	53	50						222	215
Medical Technology	35	140	35	28	37	30	41	35	34	26					147	119

Faculty of Dentistry (as of May, 1, 2014)

	Capacity of Admission	Total Capacity	1st year		2nd year		3rd year		4th year		5th year		6th year		Total	
School of Dentistry	53	322	54	20	60	29	57	21	41	23	59 [2]	23 [1]	52	22	323 [2]	138 [1]
School of Oral Health Care Sciences	32	155	37	33	36	33	44	38	40	31					157	135
Oral Health Care Science	22 (6)	100	22	21	25	25	29 [6]	28 [6]	26 [5]	25 [5]					102 [11]	99 [11]
Oral Health Engineering	10 {5}	55	15	12	11 (2)	8 (1)	15 (4)	10 (1)	14 (5)	6 (2)					55 (11)	36 (4)

	Capacity of Admission	Total Capacity	1st year		2nd year		3rd year		4th year		5th year		6th year		Total	
Total	276	1,444	286	163	303 (7)	176 (3)	311 [6] (9)	189 [6] (3)	271 [8] (5)	163 [6] (2)	159 [7]	56 [1]	143 [6]	50 [1]	1,473 [27] (21)	797 [14] (8)

*Note 1: The numbers in red indicate female students.
*Note 2: The numbers in angle brackets < > indicate the maximum number of students who can transfer into the third-year program from other institutions. They are not included in the numbers above them.
*Note 3: The numbers in angle brackets { } indicate the maximum number of students who can transfer into the second-year program from other institutions. They are not included in the numbers above them.
*Note 4: The numbers in brackets [] indicate the students transferring into the third-year program from other institutions.
*Note 5: The numbers in brackets () indicate the students transferring into the second-year program from other institutions.

Degrees Conferred

Doctoral Programs (as of May, 1, 2014)

	Doctor									
	Philosophy in Medical Science	Philosophy in Dental Science	Philosophy	Nursing Science	Medical Laboratory Science	Philosophy in Bioinformatics	Philosophy in Functional Biology	Philosophy in Biomedical Science	Philosophy in Science	Philosophy in Engineering
Academic Year 2013	91	69	12	6	10	1	0	2	9	0
Total	2,035	2,196	161	99	61	3	3	6	89	3

Granted by Merit of Thesis (as of May, 1, 2014)

	Doctor				
	Philosophy in Medical Science	Philosophy in Dental Science	Philosophy	Nursing Science	Medical Laboratory Science
Academic Year 2013	2	0	1	1	0
Total	1,757	511	24	25	14

Master's Programs (as of May, 1, 2014)

	Master												
	Medical Science	Dental Science	Oral Health Care Science	Medical Administration (1)	Medical Administration (2)	Nursing Science	Medical Laboratory Science	Bioinformatics	Functional Biology	Biomedical Science	Science	Engineering	Philosophy
Academic Year 2013	46	0	4	6	12	14	13	0	0	3	22	12	0
Total	456	15	4	76	91	313	257	14	4	13	303	20	2

Entrusted Research Funds (Fiscal Year 2013)

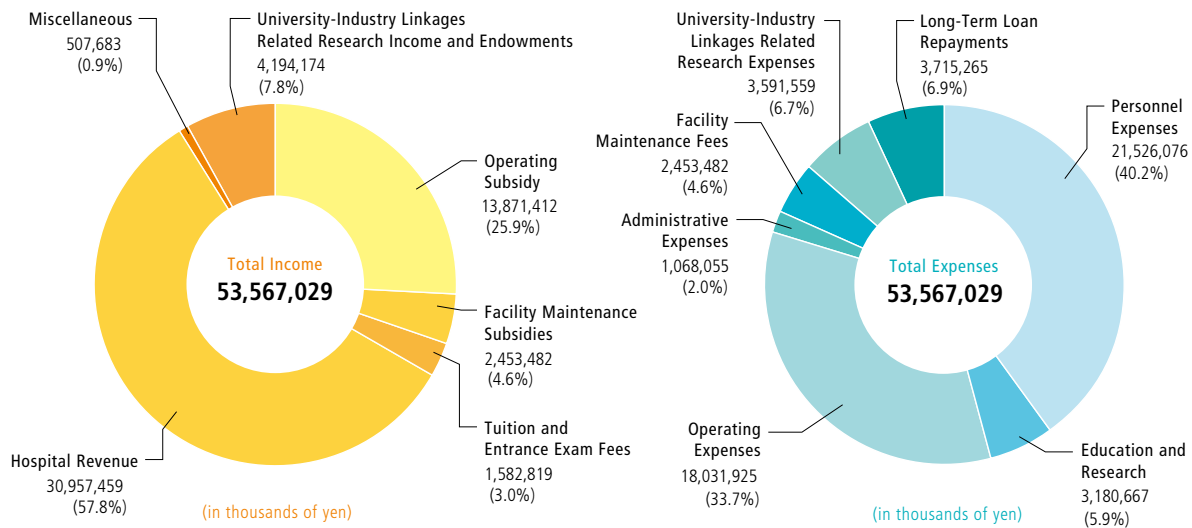
	Number	Amount
Entrusted Research	165	2,075,644
Cooperative Research	164	234,549
Donation for Promotion of Learning	841	1,424,906
Total	1,170	3,735,099

in thousands of yen

			(as of May 1, 2014)		
	Number	Amount		Number	Amount
Research on Policy Planning and Evaluation	2	35,565	Research on Rare and Intractable Diseases	4	74,810
Research on Regenerative Medicine for Clinical Application	1	69,852	Comprehensive Research on Disability Health and Welfare	3	22,700
Research on Global Health Issues	2	14,204	Research on Region Medical	1	6,000
Research on New Drug Development	1	50,960	Research on Health Security Control	1	3,500
			Research on Regulatory Science of Pharmaceuticals and Medical Devices	2	8,300
			Total	17	285,891
			in thousands of yen		

Finances (Fiscal Year 2014 Budget)

(as of May 1, 2014)		
Departments / Institutes	Term	Donor
Department of Pharmacovigilance	2005.4.1 - 2016.3.31	Mitsubishi Tanabe Pharma Corporation / Takeda Pharmaceutical Co., Ltd. / Abbvie Inc. / Eisai Co., / Chugai Pharmaceutical Co., Ltd. / Bristol-Myers K.K. / Astellas Pharma Inc. / UCB Japan Co., Ltd.
Department of Nanomedicine	2005.4.1 - 2016.3.31	Dai Nippon Printing Co., Ltd
Department of Translational Oncology	2005.10.1 - 2014.9.30	Taiho Pharmaceutical Co., Ltd.
Department of Liver Disease Control	2006.4.1 - 2016.3.31	Chugai Pharmaceutical Co., Ltd. / Toray Industries, Inc. / Dainippon Sumitomo Pharma Co., Ltd. / Bristol-Myers K.K. / MSD K.K.
Department of Cartilage Regeneration	2006.6.1 - 2015.3.31	Zimmer K.K. / Kyocera Medical Corporation
Department of Advanced Therapeutics for GI Diseases	2007.4.1 - 2015.3.31	Kyorin Pharmaceutical Co., Ltd. / Asahi Kasei Medical Co., Ltd. / Ajinomoto Pharma Co., Ltd. / UCB Japan Co., Ltd. / Otsuka Pharmaceutical Co., Ltd. / Eisai Co., Ltd. / JIMRO Co., Ltd. / Zeria Pharmaceutical Co., Ltd. / Mitsubishi Tanabe Pharma Corporation / Abbvie Inc. / Kyowa Hakko Kirin Co., Ltd.
Department of Orthopaedic Research and Development	2007.8.1 - 2015.3.31	Stryker Japan K.K. / Medtronic Sofamor Danek, Co., Ltd. / HOYA Technosurgical, Inc. / Itoh Medical, Inc. / Teijin Pharma Limited / AZ Co., Ltd.
Department of Sleep Modulatory Medicine	2009.6.1 - 2015.3.31	Fukuda Denshi Co., Ltd. / Teijin Home Healthcare Limited / GlaxoSmithKline Co., Ltd. / Philips Respironics GK / Saiwai Medix Co., Ltd. / Terumo Medical Care K.K. / Fukuda Life Tech Tokyo Co., Ltd.
Department of Pediatrics, Perinatal and Maternal Medicine	2014.4.1 - 2016.3.31	JA Ibaraki kouseiren
Department of Chronic Kidney Disease	2010.4.1 - 2015.3.31	Baxter Limited / Otsuka Pharmaceutical Co., Ltd. / Shinjinkai Medical Corporation / Seishokai Medical Corporation / Chugai Pharmaceutical Co., Ltd
Department of Organ Network and Metabolism	2011.4.1 - 2016.3.31	Shionogi & Co., Ltd.
Department of Joint Reconstruction	2011.5.1 - 2015.4.30	Biomet Japan, Inc / Johnson & Johnson K.K.
Department of Women's Health	2012.4.1 - 2016.3.31	Kikkoman Corporation
Department of Advanced Surgical Technology Research and Development	2012.9.1 - 2015.8.31	Nipro Corporation / Edwards Lifesciences Corporation / Senko Medical Instrument Mfg. Co., Ltd.
Department of Preemptive Medicine and Metabolism	2013.4.1 - 2016.3.31	Dainippon Sumitomo Pharma Co., Ltd. / Mitsubishi Tanabe Pharma Corporation
Department of Arteriosclerosis and Vascular Biology	2013.4.1 - 2016.3.31	Arteriosclerosis Res. Foundation



Location of University Campuses and Buildings (as of May 1, 2014)

Yushima Campus

Grounds 45,090m² (sq. Meter)
Buildings 249,646m² (sq. Meter)

- Administration Bureau
- Graduate School of Medical and Dental Sciences
- Graduate School of Health Care Sciences
- Biomedical Science PhD Program

1-5-45, Yushima, Bunkyo-ku, Tokyo 113-8510 03-3813-6111

- Faculty of Medicine
- Medical Hospital

1-5-45, Yushima, Bunkyo-ku, Tokyo 113-8519 03-3813-6111

- Faculty of Dentistry
- Dental Hospital

1-5-45, Yushima, Bunkyo-ku, Tokyo 113-8549 03-3813-6111

- Medical Research Institute
- Institute for Library and Media information Technology
- Student Support and Health Administration Organization
- Health Administration Office for Employees
- Research and Industry-University Alliance Organization
- Center for Education Research in Medicine and Dentistry
- Research Center for Medical and Dental Sciences
- Center for Experimental Animal
- International Exchange Center
- Life Science and Bioethics Research Center
- Center for Interprofessional Education
- Bioresource Research Center
- Center for Stem Cell and Regenerative Medicine
- Center for Brain Integration Research
- Center for Sports Medicine and Sports Dentistry
- Hospital Administration Planning Division
- Public Relations Division

1-5-45, Yushima, Bunkyo-ku, Tokyo 113-8510 03-3813-6111

Surugadai Campus

Grounds 5,597m² (sq. Meter)
Buildings 19,912m² (sq. Meter)

- Institute of Biomaterials and Bioengineering

2-3-10, Kanda Surugadai, Chiyoda-ku, Tokyo 101-0062 03-5280-8000

Kounodai Campus

Grounds 61,287m² (sq. Meter)
Buildings 13,900m² (sq. Meter)

- College of Liberal Arts and Sciences
- Institute for Library and Media information Technology-Kounodai Branch Library
- Health Administration Center, Kounodai Branch

2-8-30, Kounodai, Ichikawa-city, Chiba Prefecture 272-0827 047-300-7103

- International House
- International Student House

2-8-1, Kounodai, Ichikawa-city, Chiba Prefecture 272-0827 047-371-7936

		Grounds	Buildings
Toda Boat-House	1-60, Todakoen, Toda-city, Saitama Prefecture	696m ²	479m ²
Tateyama Oga-Resort House	Oga, Tateyama-city, Chiba Prefecture	4,357m ²	834m ²
Hakusan Residence Housing	2-36-3, Hakusan, Bunkyo-ku, Tokyo	497m ²	91m ²

		Grounds	Buildings
Wakamiyacho Residence Housing	26, Wakamiya-cho, Shinjuku-ku, Tokyo	995m ²	—
Tonoyama Residence Housing	1-50-3, Chuo, Nakano-ku, Tokyo	1,974m ²	1,945m ²
Etchujima Residence Housing	1-3, Etchujima, Koto-ku, Tokyo	17,967m ²	25,480m ²
The Ossuary (Nokotsu-do)	3-10-1, Kounodai, Ichikawa-city, Chiba Prefecture	(115m ²)	—

Total	Grounds 138,460m ² (115m ²) (sq. Meter)	Buildings 312,287m ² (sq. Meter)
-------	--	---

* The numbers in parentheses () show temporary or long-term rental grounds and buildings.

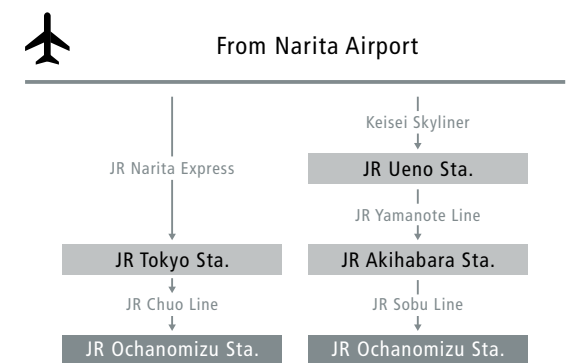
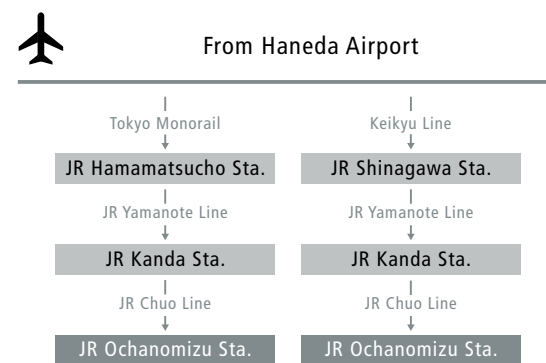
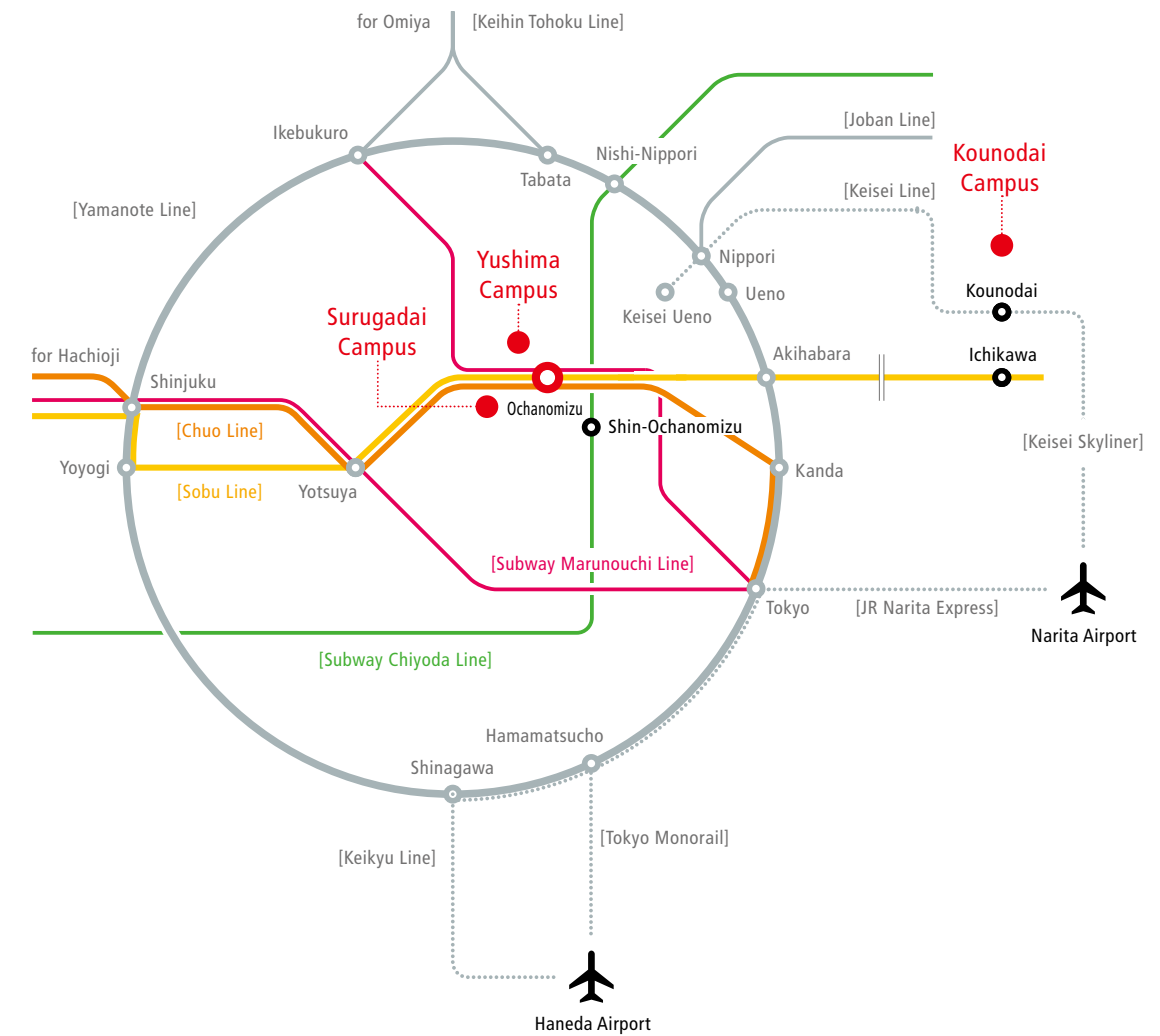
Access

Yushima and Surugadai Campuses

- JR Line Ochanomizu Sta.
- Subway Marunouchi Line Ochanomizu Sta.
- Subway Chiyoda Line Shin-Ochanomizu Sta.

Kounodai Campus

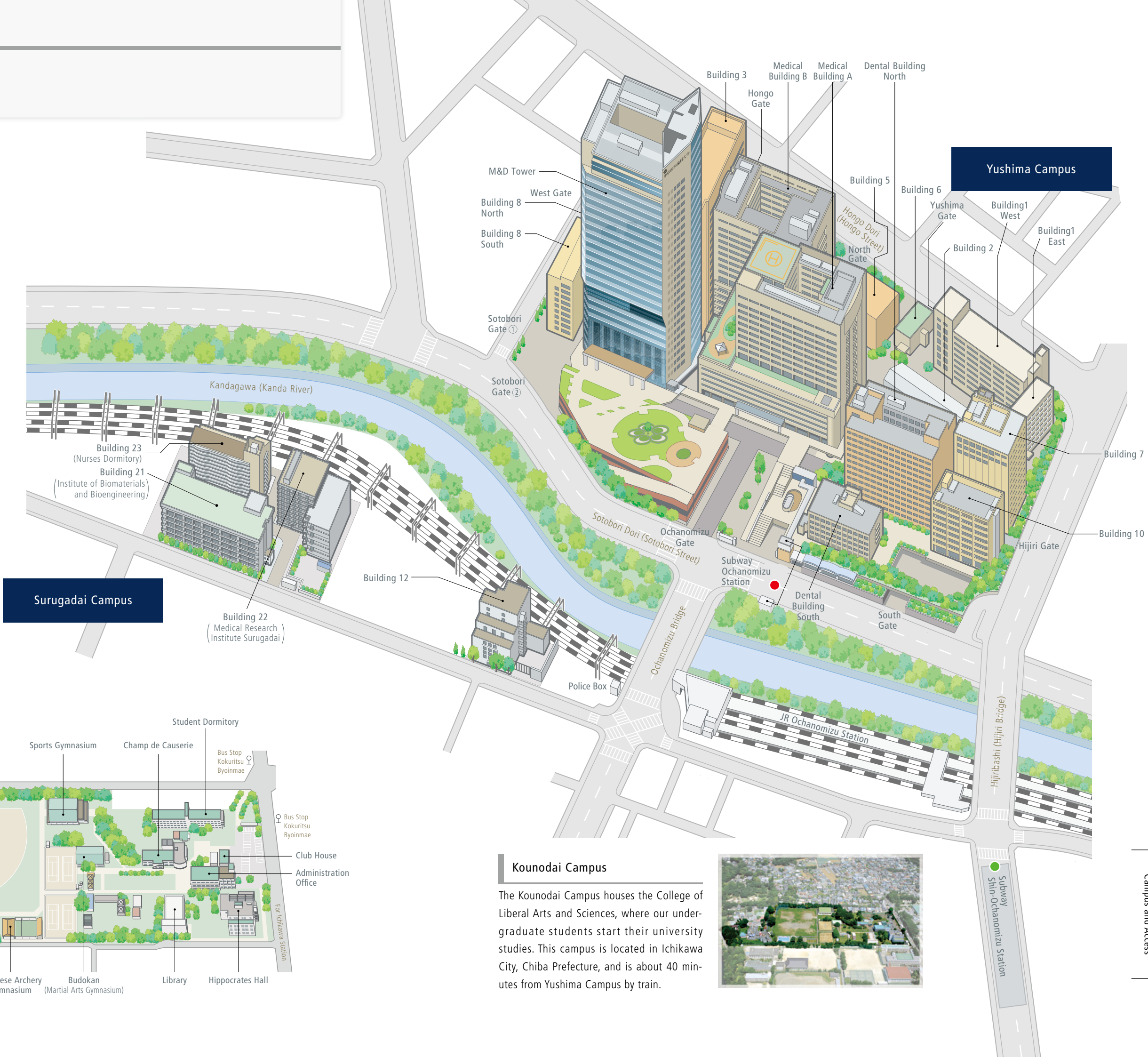
- Keisei Line Kounodai Sta.
- Sobu Line Ichikawa Sta.
- Bus for Matsudo Sta. from No.1 Keisei Bus Stop to Kokuritsu Byoinmae



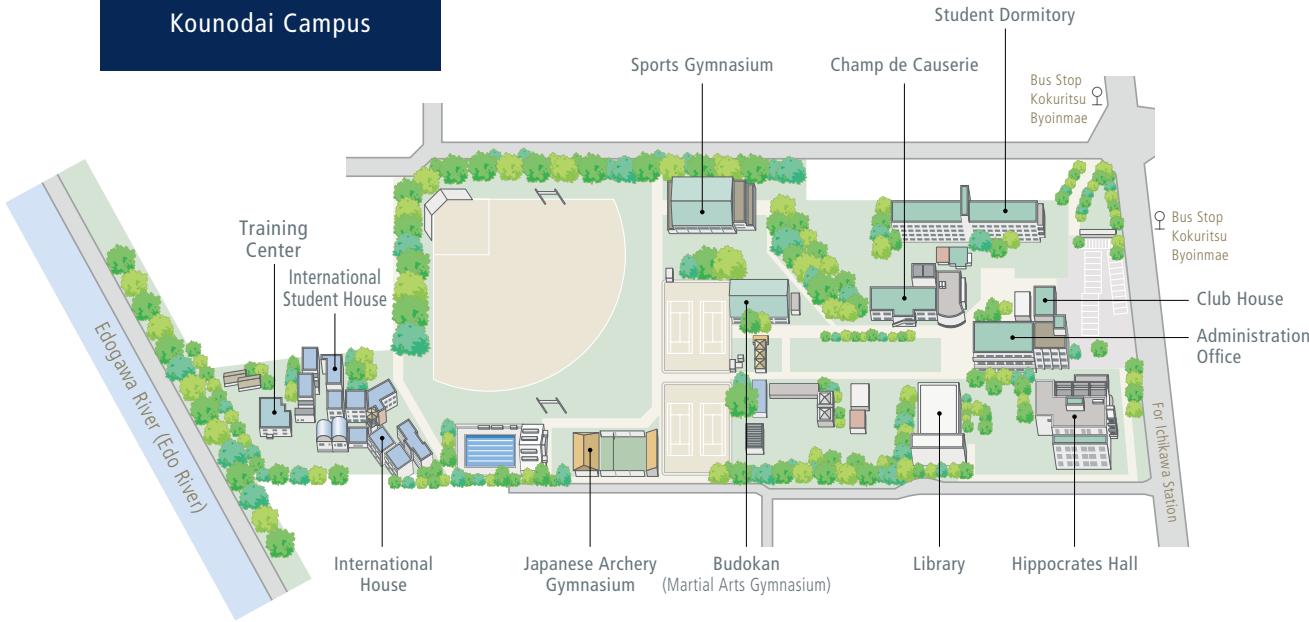
Campus and Access

Yushima and Surugadai Campuses

TMDU is headquartered in the center of Tokyo, amid many sites of historic interest. The main campus, Yushima Campus, and the satellite campus, Surugadai Campus, contain our research buildings and hospitals. At these campuses, highly specialized education in clinical and basic research contexts is offered so as to foster health care professionals with advanced knowledge and skills.



Kounodai Campus



Kounodai Campus

The Kounodai Campus houses the College of Liberal Arts and Sciences, where our undergraduate students start their university studies. This campus is located in Ichikawa City, Chiba Prefecture, and is about 40 minutes from Yushima Campus by train.

