

OVERVIEW 2013

**TOKYO
MEDICAL
AND
DENTAL
UNIVERSITY**



Cultivating Professionals with Knowledge and Humanity

Cultivating Professionals with Knowledge and Humanity

Our daily work is dedicated to a word of gratitude and a smile of contentment from our patients and their family members.

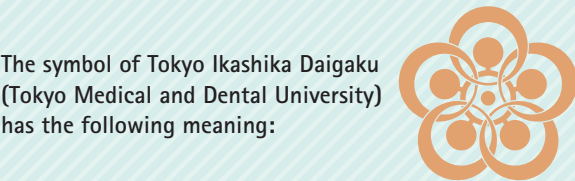
In order to win the trust of people we serve we affirm that:

- We will do our utmost to gain advanced knowledge and skills in medicine.
- We will cultivate empathy for the suffering and sorrow that accompany disease, and will always maintain a strong sense of ethics.
- We will support all those who are engaged in education, research and medical service as they continue their journey to become true professionals with knowledge and humanity.

The above is the mission of TMDU, which we declare with humility and strive to achieve.

TMDU's Educational Philosophies

- To provide students with a broad education and a rich sensibility
- To educate creative people capable of diagnosing and solving problems independently
- To train medical professionals with a rich international quality



1. This symbol was designed to show the history of the development of Tokyo Medical and Dental University. Its shape represents the plum blossom, which is also the symbol of the neighboring shrine Yushima Tenmangu. Yushima Tenmangu is also known as Yushima Tenjin; Tenjin is the Shinto god of knowledge.

- 2. The center circle of this symbol, the core of the flower, was the emblem of the former Tokyo Koto Shikaigakko (Tokyo National School of Dentistry) and the five petals around the core show the present university which has developed from that school.
- 3. The five petals express the Faculty of Medicine, Faculty of Dentistry, College of Liberal Arts and Sciences, Institute of Biomaterials and Bioengineering, and Medical Research Institute, and these five petals, which join together to make the flower bloom, represent the activity of the university.
- 4. The bold outline of these petals suggests further development and progress in the future.



Our university logo mark was designed based on the initial letters of Tokyo Medical and Dental University. It has following meanings:

- 1. By connecting the letters M and D, the logo mark implies fusion of Medicine and Dentistry.
- 2. Bold lines express confidence and strength which are the heritage of our university.

Message from the President..... 02

Brief History, Organization

Brief History..... 04

Management Structure..... 06

Education and Research Structure..... 08

Graduate Schools, Faculties

Graduate School of Medical and Dental Sciences.....10

Graduate School of Health Care Sciences..... 12

Biomedical Science PhD Program..... 13

Faculty of Medicine..... 13

Faculty of Dentistry..... 14

School of Dental Technologists..... 14

College of Liberal Arts and Sciences..... 15

Institute of Biomaterials and Bioengineering..... 16

Medical Research Institute..... 17

Institute for Library and Media Information Technology..... 18

Student Support and Health Administration Organization..... 19

Research and Industry-University Alliance Organization..... 20

Medical Hospital / Dental Hospital.....21

Nationwide Joint Institutes / Joint Institutes for Education and Research..... 24

Other Institutes..... 25

Current Projects

Educational Program..... 26

Research Program..... 27

Other Programs..... 29

International Exchange

Ghana-Tokyo Medical and Dental University Research Collaboration Program..... 30

Latin American Collaborative Research Center, TMDU, Santiago, Chile.....31

CU-TMDU Research and Education Collaboration Center in Thailand.....31

Tokyo Medical and Dental University and Partners Healthcare International-Alliance for Medical Education..... 32

Student Exchange Program between the Faculty of Medicine, Graduate School, Tokyo Medical and Dental University and the Faculty of Medicine, Imperial College of Science Technology and Medicine..... 33

International Summer Program (ISP)..... 34

Undergraduate Overseas Studying Awards..... 35

2012 Postgraduate Overseas Studying Awards, Studying Abroad during Project Semester..... 35

Overseas Affiliated Universities / Inter-Faculty Agreements..... 36

Number of International Students..... 37

Statistics

Number of Staff Members..... 38

Number of Graduate Students..... 39

Number of Undergraduate Students..... 40

Degrees Conferred.....41

Educational Facilities.....41

Grants-in-Aid for Scientific Research (Fiscal Year 2013)..... 42

Entrusted Research Funds (Fiscal Year 2012)..... 42

Grants-in-Aid for Scientific Research from Ministry of Health, Labour and Welfare..... 42

Endowed Departments..... 43

Finances (Fiscal Year 2013 Budget)..... 43

Campus and Access

Yushima and Surugadai Campuses / Kounodai Campus..... 44

Location of University Campuses and Buildings (as of May 1, 2013), Access..... 46

Cultivating Professionals with Knowledge and Humanity

Tokyo Medical and Dental University is unique among medical and dental universities in Japan in that we have two graduate schools, Medical and Dental Sciences and Health Care Sciences; four undergraduate faculties, Medicine, Dentistry, Health Care Sciences and Oral Health Care Sciences; two university hospitals; an undergraduate College of Liberal Arts and Sciences; and two research institutes, namely the Institute of Biomaterials and Bioengineering and the Medical Research Institute.

At TMDU we strive to produce scientists who are spirited and expend every possible effort to seek the unknown and use their knowledge in service to humanity. In addition, we expect that they must exhibit intellectual curiosity about anything they might encounter, respect for the diversity of experiences they will have, and a broad mind that allows for flexibility.

With the above goals in mind, we determined "Cultivating



Professionals with Knowledge and Humanity" as our mission statement. "Knowledge" consists of learning and techniques, and it is the axis of profession. "Humanity" encompasses education and sensitivity, and serves as a lubricant. The proper combination of these factors thus leads the way to becoming a professional, which we clearly see as a goal of our mission.

TMDU manifests three educational philosophies:

To provide students with a broad education and a rich sensibility

A teaching from the Discourses of Confucius holds that, "A scholar is not a vessel." In this context a "vessel" is a device with a single purpose. Thus, scholars must not be specialists who have been trained for only one purpose. Instead, they need broad knowledge, wide experience, and rich sensibility so they can cope with diversity. Similarly, health care providers must not be vessels: they should not impose artificial limits on themselves.

In a dialogue recounted in the Discourses, one of Confucius's disciples asked, "Is there any single word which can be a guide to conduct throughout one's life?" To this the great thinker answered, "Thoughtfulness. Do to others as you would have them do to you." Confucius meant that one had to be true to oneself while, at the same time, having the intellectual sympathy to be considerate of other people. The concept of "intellectual sympathy" is very important, as it means a sympathy that is not merely composed of kindness

or pity, but is rather a refined sentiment that is based on a broad education.

The ability to provide intellectual sympathy is the mark of a true health care professional. Certainly, when we treat our patients to the utmost of our abilities we can gain a sense of accomplishment. However, if we only do our best to treat patients, our actions can only result in a smug feeling of contented self-satisfaction.

Only when we see the joy of life restored to a patient or a family member of a patient can we be fully satisfied with our actions. To attain such a worthy accomplishment, we have to understand the pain a patient has and have sympathy for the patient's surrounding situation, family circumstances, occupation, viewpoints, and other factors.

To become an ideal professional, then, we need to obtain a broad range of knowledge and diverse ways of thinking, and we must also cultivate a rich education, deep insight into human nature, high ethical standards and a solid ability to explain what we do. A broad education rooted in liberal arts is thus necessary to become a true medical professional.

To educate creative people capable of diagnosing and solving problems independently

Practitioners of traditional Chinese medicine use a hundred-drawer chest. Medical students must make a chest of their own, storing knowledge and techniques as they are learned. In actual clinical and research situations, these drawers can be opened in various combinations. In time, you will learn new techniques and obtain new knowledge as you perfect your techniques. Sometimes you may refill your chest; other times you may need to make new drawers. This development will continue throughout your life.

Acquiring knowledge and techniques will help you identify and solve problems. In addition, concrete thinking is indispensable. The founder of critical philosophy, Immanuel Kant, said that knowledge can start with experience, but, without the use of thoughtful reflection, it may become blind. His idea echoes the teachings of Confucius.

The Master said, in the Discourses of Confucius, "If one learns from others but does not think, one will be bewildered. If, on the other hand, one thinks but does not learn

from others, one will be in peril." Thus, in your studies, try to learn as many things as possible. Thoroughly digest what you have learned, and then apply it to solve problems around you. When you understand the spirit of the Discourses you will be able to identify and solve problems independently.

Regardless of how much knowledge and information you acquire, unless you think about how it can be utilized in your life, that hard-won knowledge and information may turn out to be useless. At the other extreme, if you base your judgment only on your own reasoning, you may become self-righteous and make mistakes due to hubris or narrow-mindedness. Thus, only through thoughtful reflection and thinking can you appropriately solve problems.

Accordingly, a university's mission is not to fill students with knowledge, but rather to teach them how to learn. You therefore must study liberal arts and sciences as well as your specific field of science. By exerting yourself completely and learning to identify problems and ask questions you can become an independent leader and a first-class, full-fledged professional. Learning and thoughtful thinking form a perfect pair.

To train medical professionals with a rich international quality

We aim to nurture medical professionals who will be international leaders in clinical and research fields. However, one can become an international citizen only after first knowing one's own culture. For example, Japanese people need to first have a deep understanding of Japanese culture and tradition. Next, they must understand different cultures and traditions, such as found in the United States and France. In other words, to be a truly international citizen, you need to have a broad way of thinking and understanding of the world around you, and behave accordingly.

At TMDU, we offer various study abroad scholarships in

the hope that students can experience other cultures, while keeping their own culture.

First, each medical or dental student has the chance to go to a country of his or her choice under the short-term study abroad scholarship system. Last year, 14 students received such scholarships. In addition, TMDU sent 13 students to our three research centers abroad, in Ghana, Chile, and Thailand.

We also sent 10 sixth-year Faculty of Medicine students to Harvard University for clinical training, and 4 fourth-year medical students to Imperial College London (UK), from whom we received 5 exchange students.

Finally, we also encourage our graduate students to pursue research abroad.

Self Improvement

How wonderful it is that the more you review what you have learned, the deeper you understand it! By learning received wisdom from books and those who have mastered their arts, and by constantly reviewing what you have learned, you will naturally be ready to learn from your experiences. You may gain confidence in what you can do, and be able to challenge accepted wisdom and embrace new findings. How enjoyable this would be! This is what learning should be. If you train yourself properly, friends and followers will come to visit you from afar. It would be magnificent to be in such a position, wouldn't it? When your visitors share their truths with you and each other, you will wake to a completely new understanding of the world. How tremendous! It is not until you reach this point

that you can really understand the true meaning of Confucius' statement, "Even though others may not understand you, do not get upset about it." That is, once you reach a confident level of knowledge, you will not easily get upset with others or blame them for not understanding you. Instead, you will behave accordingly and appropriately, despite the lack of recognition for what you have attained.

Wouldn't this behavior describe a true medical professional? We can thank Confucius for making clear the importance of adhering to one's knowledge-based beliefs and sticking to them all the way through, regardless of what other people might think. We hope that our students will create their own art, weaving together knowledge, consisting of learning and techniques, and humanity, made of a rich sensitivity and a broad education. To help our students achieve this goal, we are unstinting in our assistance and support.

Brief History

Oct. 12, 1928	· Tokyo National School of Dentistry was founded.	Sep. 1973	· Medical Research Institute was established.
Apr. 1944	· Tokyo Medical and Dental College was established.	Apr. 1989	· School of Allied Health Sciences was established.
Aug. 1946	· Tokyo Medical and Dental College was established. · Tokyo Medical and Dental University (The Former System) was established.	May. 1989	· Laboratory for Biomedical Analysis was established. (closed in May. 1996)
Jun. 1949	· Medical Hospital and Dental Hospital were established.	Apr. 1992	· Dept. of Maxillofacial Rehabilitation established as a Core Departmente.
Apr. 1951	· Tokyo Medical and Dental University (The New system), Faculty of Medicine and Faculty of Dentistry were established. · Research Institute for Dental Materials was established. · School of Nursing was established. (closed in Mar. 1991) · School for Dental Hygienists was established. (closed in May. 2005)	Apr. 1993	· Medical Research Division (Health Care Sciences) was established. · Human Gene Sciences Center was established. (reorganized in Apr. 2010)
Apr. 1952	· School for Dental Technicians was established.	Jan. 1995	· Information Center for Medical Sciences was established. (reorganized in Apr.2010)
Apr. 1955	· Medical Research Division was established. · Dental Research Division was established. · Premedical and Predental Course was established in Faculty of Humanities and Sciences, University of Chiba. (closed in Mar. 1958)	May. 1996	· Instrumental Analysis Research Center for Life Science was established. (reorganized in Apr.2003)
Apr. 1958	· Premedical and Predental Course was established at Kounodai Annex.	Apr. 1998	· General Isotope Center was established. (reorganized in Apr. 2003)
Apr. 1962	· School of Medical Technology was established. (closed in Mar. 1973)	Apr. 1999	· Graduate School was established. · Institute of Biomaterials and Bioengineering was established.
Apr. 1965	· College of Liberal Arts and Sciences was established.	Apr. 2000	· Graduate School of Medical and Dental Sciences was established. · Graduate School of Allied Health Sciences was established. · International Student Center was established. (reorganized in Mar. 2009)
Apr. 1966	· Research Institute for Dental Materials renamed Institute for Medical and Dental Engineering.	Apr. 2001	· Graduate School of Health Care Sciences was established.
Apr. 1970	· Health Service Center was established.	Apr. 2002	· Center for Education Research in Medicine and Dentistry was established.
Apr. 1972	· Animal Research Center was established. (closed in May. 1991)	Apr. 2003	· School of Biomedical Science was established. · Biomedical Science PhD Program was established. · Research Center for Frontier Life Science was established. (reorganized in Apr. 2010)
		Sep. 2003	· Intellectual Property Division was established. (reorganized in Apr. 2011)

Principals and Presidents

Tokyo National School of Dentistry

Toru SHIMAMINE	Oct. 13, 1928 – Mar. 31, 1944
----------------	-------------------------------

Tokyo Medical and Dental College

Toru SHIMAMINE	Apr. 1, 1944 – Feb. 9, 1945
----------------	-----------------------------

Tokyo Medical and Dental College

Masaru NAGAO	Feb. 10, 1945 – Feb. 19, 1945
--------------	-------------------------------

Tokyo Medical and Dental College

Masaru NAGAO	Feb. 20, 1945 – Mar. 31, 1950
--------------	-------------------------------

Tokyo Medical and Dental University

Masaru NAGAO	Aug. 27, 1946 – Oct. 4, 1946
--------------	------------------------------

Tokyo Medical and Dental University
(The Former System)

Masaru NAGAO	Oct. 5, 1946 – Mar. 31, 1951
--------------	------------------------------

Tokyo Medical and Dental University
(The New System)

Masaru NAGAO	Apr. 1, 1951 – Jun. 30, 1961
Masahiro OKADA	Jul. 1, 1961 – Feb. 29, 1968

Tokyo Medical and Dental University

Keizo OTA	Mar. 1, 1968 – Mar. 15, 1968
-----------	------------------------------

Tokyo Medical and Dental University

Keizo OTA	Mar. 16, 1968 – Oct. 8, 1969
-----------	------------------------------

Tokyo Medical and Dental University

Fumihiko SHIMIZU	Oct. 9, 1969 – Sep. 17, 1970
------------------	------------------------------

Tokyo Medical and Dental University

Fumihiko SHIMIZU	Sep. 18, 1970 – Sep. 17, 1974
Yasuji KATSUKI	Sep. 18, 1974 – Jul. 31, 1977
Hisashi YOSHIDA	Aug. 1, 1977 – Jul. 31, 1985
Rokuro KANO	Aug. 1, 1985 – Jul. 31, 1991
Hajime YAMAMOTO	Aug. 1, 1991 – Jul. 31, 1995
Akio SUZUKI	Aug. 1, 1995 – Mar. 31, 2004

National University Corporation
Tokyo Medical and Dental University

Akio SUZUKI	Apr. 1, 2004 – Mar. 31, 2008
Takashi OHYAMA	Apr. 1, 2008 –

Organization

Management Structure



Associate Managing Trustees

- Hajime KARASUYAMA**
Planning and International Exchange
- Hiroshi KONDO**
General Affairs and Finance
- Tsukasa CHIBA**
Education
- Shigetaka KITAJIMA**
Research
- Hidehiro MIZUSAWA**
Research
- Yujiro TANAKA**
Medical Treatment
- Masahiko SHIMADA**
Dental Treatment

Executive Advisers to the President

- Yoko KAWAGUCHI**
Planning and International Exchange
- Masanobu KITAGAWA**
Education
- Ken OMURA**
Education
- Fumitoshi ISHINO**
Research
- Miyuki AZUMA**
Entrance Examination
- Tomohiro MORIO**
Entrance Examination and High School-University Collaboration
- Izumi SUGIHARA**
Evaluation
- Sachiko ISEKI**
Evaluation
- Chihiro AKAZAWA**
Evaluation
- Hikaru NAKASHIMA**
Evaluation
- Kohji MITSUBAYASHI**
Evaluation
- Masato MATSUURA**
Complaint Consultation and Student Support
- Yoshinobu EISHI**
Complaint Consultation and Student Support
- Kazuo TAKAKUDA**
Public Relations

Administrative Council

Deliberate on management issues

- | Internal Committee | External Committee |
|---|---|
| Takashi OHYAMA
President | Nobuyuki IDEI
Founder & CEO, Representative Director, Quantum Leaps Corporation |
| Kikuo OHNO
Trustee (Planning and International Exchange) | Takayoshi INOUE
President, National Association of Audio-Visual Techniques in Adult Education, Honorary President, Japan Audio-Visual Education Association |
| Isao ITO
Trustee (General Affairs, Finance, and Facilities) | Morio KOIKE
Director, Shuwakai Medical Corporation, Trustee, Educational Foundation Bunkyo Gakuen, Professor Emeritus |
| Hideaki SUDA
Trustee (Education) | Akira SESHIMO
Aioi Nissay Dowa Insurance Co., Ltd, Special Adviser |
| Ikuo MORITA
Trustee (Research) | Fujio MIURA
Director, Takahashi Orthodontic Office, Professor Emeritus |
| Yasuyuki YOSHIZAWA
Trustee (Medical and Dental Treatments) | Tsuneo WATANABE
Chairman, Board of Trustees, Editor-in-Chief, The Yomiuri Shimbun Holdings |

Education and Research Council

Deliberate on educational and research issues

- | Takashi OHYAMA
President | Takao HANAWA
Director, Institute of Biomaterials and Bioengineering |
|--|--|
| Kikuo OHNO
Trustee (Planning and International Exchange) | Shigetaka KITAJIMA
Director, Medical Research Institute |
| Isao ITO
Trustee (General Affairs, Finance, and Facilities) | Yujiro TANAKA
Director, Medical Hospital |
| Hideaki SUDA
Trustee (Education) | Masahiko SHIMADA
Director, Dental Hospital |
| Ikuo MORITA
Trustee (Research) | Atsuhiko KINOSHITA
Director General, Institute for Library and Media Information Technology |
| Yasuyuki YOSHIZAWA
Trustee (Medical and Dental Treatments) | Hisashi TANIGUCHI
Officer, Student Support and Health Administration Organization |
| Sei SASAKI
Vice President (Overall Management) | Hidehiro MIZUSAWA
Professor, Graduate School of Medical and Dental Sciences (Medical Division) |
| Yasuhito YUASA
Dean, Graduate School of Medical and Dental Sciences
Dean, Faculty of Medicine | Akira YAMAGUCHI
Professor, Graduate School of Medical and Dental Sciences (Dental Division) |
| Tomoko INOUE
Dean, Graduate School of Health Care Sciences | Yayoi SAITO
Professor, Graduate School of Health Care Sciences |
| Hiroyuki KAGECHIKA
Dean, Biomedical Science PhD Program | Masayuki NARA
Professor, College of Liberal Arts and Sciences |
| Junji TAGAMI
Dean, Faculty of Dentistry | Kimihiro YAMASHITA
Professor, Institute of Biomaterials and Bioengineering |
| Tsukasa CHIBA
Dean, College of Liberal Arts and Sciences | Fumitoshi ISHINO
Professor, Medical Research Institute |

Organization

Education and Research Structure



Graduate School

Yasuhito YUASA
Dean, Graduate School of Medical and Dental Sciences

Junji TAGAMI
Vice Dean, Graduate School of Medical and Dental Sciences

Hiroyuki KAGECHIKA
Vice Dean, Graduate School of Medical and Dental Sciences

Tomoko INOUE
Dean, Graduate School of Health Care Sciences

Hiroyuki KAGECHIKA
Dean, Biomedical Science PhD program

Faculty of Medicine

Yasuhito YUASA
Dean, Faculty of Medicine

Hidehiro MIZUSAWA
Director, School of Medicine

Minoru TOZUKA
Director, School of Health Care Sciences

Yujiro TANAKA
Director, Medical Hospital

Faculty of Dentistry

Junji TAGAMI
Dean, Faculty of Dentistry

Keiji MORIYAMA
Director, School of Dentistry

Kayoko SHINADA
Director, School of Oral Health Care Sciences

Masahiko SHIMADA
Director, Dental Hospital

Tetsuya SUZUKI
Head, School of Dental Technologists

College of Liberal Arts and Sciences

Tsukasa CHIBA
Dean, College of Liberal Arts and Sciences

Institute of Biomaterials and Bioengineering

Takao HANAWA
Director

Medical Research Institute

Shigetaka KITAJIMA
Director

Institute for Library and Media Information Technology

Atsuhiko KINOSHITA
Director General, Institute for Library and Media Information Technology

Atsuhiko KINOSHITA
Director, Multimedia Education Division

Atsuhiko KINOSHITA
Director, Library

Kazuyo KUROYANAGI
Director, Kounodai Branch Library

Kozo TAKASE
Director, Information Technology Division

Student Support and Health Administration Organization

Hisashi TANIGUCHI
Officer, Student Support and Health Administration Organization

Yoshinobu EISHI
Director, Support Center for Students and Female Staff

Yasunari MIYAZAKI
Director, Health Administration Center

Health Administration Office for Employees

Yasunari MIYAZAKI
Director

Research and Industry-University Alliance Organization

Ikuo MORITA
Officer, Research and Industry-University Alliance Organization

Ikuo MORITA
Senior Director, Research Promotion Division

Shuki MIZUTANI
Senior Director, Industry Alliances Division

Center for Education Research in Medicine and Dentistry

Nobuo NARA
Director

Research Center for Medical and Dental Sciences

Masataka NAKAMURA
Director

Center for Experimental Animal

Masami KANAI
Director

International Exchange Center

Ikuko MORIO
Director

Life Science and Bioethics Research Center

Masayuki YOSHIDA
Director

Center for Interprofessional Education

Kazuki TAKADA
Director

Bioresource Research Center

Joji INAZAWA
Director

Center for Stem Cell and Regenerative Medicine

Ichiro SEKIYA
Director

Center for Sports Medicine and Sports Dentistry

Kazuyoshi YAGISHITA
Director

Hospital Administration Planning Division

Hiroshi KONDO
Director

Graduate Schools

Graduate School of Medical and Dental Sciences

Human Resource Development Goals
Master's Program

This course is rooted in a systematic curriculum developed through the fusion of numerous fields, with the primary focus on medicine, dentistry, and life science and technology. The goals of the course are to inspire mutual cooperation in the various domains of life sciences and to develop capable educators, researchers, technicians, and other professionals in medicine, dentistry, and life science and technology who bring extensive knowledge and high ethical standards regarding human health and welfare to their work.

In detail, the Master of Medical Administration Course strives to effectively address today's social needs pertaining to medical services, based on a curriculum structured to

develop professionals who will excel in positions of leadership. Specifically, the course is designed to train individuals who will help establish social systems that supply increasingly efficient and superior patient-focused health care through the fields of medical administration and policy.

Master's Program

Medical and Dental Science and Technology

Medical and Dental Science and Technology,
Master of Medical Administration Course

Doctoral Programs
Medical and Dental Sciences

This course is devoted to developing researchers who are well-versed in specialized knowledge that spans both medicine and dentistry and who act as global leaders and cooperate closely with their counterparts in other fields; educators who are rich in spirit and have highly developed expertise in devising and implementing effective educational strategies; highly specialized medical professionals who have uncompromising ethical views and a passionate interest in research; and opinion leaders who will act as pioneers in a new and more progressive era.

Life Science and Technology

This program is designed to develop professionals who

have comprehensive knowledge in the field of life science and technology. These individuals will attain high degrees of specialization and problem-solving abilities and bring their impressive educational background and global perspective to interdisciplinary fields positioned to fuse the various domains of life science and technology with disease research. In particular, the envisioned outcomes include the training of researchers who have advanced capabilities in the fulfillment of research objectives, educators who achieve distinguished levels of scholarship and possess an exceptional sense of humanity, and professionals who have the high-caliber management skills required for cutting-edge innovation in such fields as biotechnology and medical equipment development and who can flourish on the frontlines of the business world.

Doctoral Programs

Medical and Dental Sciences

Oral Health Sciences

Oral Pathology	Anesthesiology and Clinical Physiology
Bacterial Pathogenesis	Orofacial Pain Management
Molecular Immunology	Pediatric Dentistry
Advanced Biomaterials	Orthodontic Science
Diagnostic Oral Pathology	Cariology and Operative Dentistry
Organic Biomaterials	Fixed Prosthodontics
Functional Material	Pulp Biology and Endodontics
Oral Radiation Oncology	Removable Partial Prosthodontics
Oral and Maxillofacial Surgery	Oral Implantology and Regenerative Dental Medicine
Oral and Maxillofacial Radiology	

Maxillofacial and Neck Reconstruction

Plastic and Reconstructive Surgery	Molecular Craniofacial Embryology
Head and Neck Surgery	Cellular Physiological Chemistry
	Metals
Radiation Therapeutics and Oncology	Biodesign
Maxillofacial Anatomy	Maxillofacial Surgery
Cognitive Neurobiology	Maxillofacial Orthognathics
	Maxillofacial Prosthetics

Bio-Matrix

Cell Biology	Pharmacology
Medical Biochemistry	Connective Tissue Regeneration
	Biochemistry
Joint Surgery and Sports Medicine	Cell Signaling
Biostructural Science	Inorganic Materials
	Periodontology

Public Health

Health Promotion	Health Policy and Informatics
Environmental Parasitology	Life Sciences and Bioethics
Forensic Medicine	Forensic Dentistry
International Health and Medicine	Health Care Economics
Health Care Management and Planning	Dental Education Development
Molecular Epidemiology	Oral Health Promotion
Research Development	Sports Medicine and Dentistry
	Educational System in Dentistry
	Educational Media Development

Gerontology and Gerodontology

Geriatrics and Vascular Medicine	Rehabilitation Medicine
	Gerodontology and Oral Rehabilitation

Comprehensive Patient Care

Laboratory Medicine	Acute Critical Care and Disaster Medicine
Critical Care Medicine	Clinical Oncology
Liaison Psychiatry and Palliative Medicine	Dentistry for Persons with Disabilities
Pharmacokinetics and Pharmacodynamics	General Dentistry
Medical Education Research and Development	Psychosomatic Dentistry
	Behavioral Dentistry
	Temporomandibular Joint and Oral Function

Cognitive and Behavioral Medicine

Neuroanatomy and Cellular Neurobiology	Ophthalmology and Visual Science
Systems Neurophysiology	Otorhinolaryngology
Pharmacology and Neurobiology	Neurology and Neurological Science
Molecular Neuroscience	Psychiatry and Behavioral Sciences
Neuropathology	Neurosurgery
	Endovascular Surgery
	NCNP Brain Physiology and Pathology

Bio-Environmental Response

Immune Regulation	Pathological Biochemistry
Molecular Virology	Immunology
Immunotherapeutics	Pediatrics and Developmental Biology
Cellular and Environmental Biology	Medicine and Rheumatology
Biodefense Research	Dermatology
Pathological Cell Biology	NCCHD Child Health and Development

Systemic Organ Regulation

Human Pathology	Stem Cell Regulation
Physiology and Cell Biology	Molecular Pharmacology
Molecular Cellular Cardiology	Molecular Cell Biology
Molecular Medicine and Metabolism	Epigenetics
	Chronobiology

Stem Cell Biology
Respiratory Medicine
Gastroenterology and Hepatology
Surgical Oncology
Cardiovascular Medicine
Anesthesiology
Cardiovascular Surgery

Nephrology
Comprehensive Reproductive Medicine
Urology
Esophageal and General Surgery
Thoracic Surgery
Igakuken Disease-oriented Molecular Biology

Advanced Therapeutic Sciences

Clinical Anatomy	Genetic Regulation
Systems BioMedicine	Bioinformatics
Comprehensive Pathology	Applied Gene Medicine
Molecular Oncology	Molecular Cytogenetics
Surgical Pathology	Biochemical Genetics
Experimental Animal Model for Human Disease	Structural Biology
Signal Gene Regulation	Hematology
Biofunctional Molecular Science	Molecular Endocrinology and Metabolism
Medicinal Chemistry	Hepato-Biliary-Pancreatic Surgery
Biomedical Devices and Instrumentation	Orthopaedic and Spinal Surgery
Medical Instrument	Diagnostic Radiology and Nuclear Medicine
Biomechanics	Disease Genomics
Biointerface Engineering	Human Genetics and Disease Diversity
Material Biofunctions	Applied Regenerative Medicine
	JFCR Cancer Biology

Doctoral Program

Life Science and Technology

Life Science and Technology

Microbial Genomics and Ecology	Developmental and Regenerative Biology
Biomedical Devices and Instrumentation	Immunology
Biomedical Information	Epigenetics
Bioelectronics	Computational Biology
Material-Based Medical Engineering	Structural Biology
Organic and Medicinal Chemistry	Neuroscience
	Bio-informational Pharmacology
	Therapeutic Genomics
	Molecular Genetics
	Epigenetic Epidemiology
	Genome Structure and Regulation
	RIKEN Molecular and Chemical Somatology
	Molecular Biomedicine
	NCC Cancer Science

Graduate Schools

Endowed Departments

Department of Pharmacovigilance	Department of Advanced Therapeutics for GI Diseases	Department of Chronic Kidney Disease	Department of Advanced Surgical Technology Research and Development
Department of Nanomedicine	Department of Orthopaedic Research and Development	Department of Organ Network and Metabolism	Department of Preemptive Medicine and Metabolism
Department of Translational Oncology	Department of Sleep Modulatory Medicine	Department of Joint Reconstruction	Department of Arteriosclerosis and Vascular Biology
Department of Liver Disease Control	Department of Pediatrics, Perinatal and Maternal Medicine	Department of Women's Health	
Department of Cartilage Regeneration			

Graduate Schools

Graduate School of Health Care Sciences

Human Resource Development Goals

The Nursing Sciences and Laboratory Sciences course was founded upon the goal of developing individuals who are scrupulously steeped in the professional knowledge and technology of these domains. Graduates will manifest highly advanced practical skills on clinical frontlines, exhibit extensive intellectual and ethical understanding and interest in related fields, and retain a healthy zeal for learning and problem-solving using directed thought. The course has the ultimate goal of producing professionals who will strive, through the vigorous promotion of clinical-oriented research, to address issues in their specialized fields of expertise, going on to demonstrate leadership and educational prowess rooted in international and interdisciplinary perspectives.

Master's Course

This course is meant to nurture specialized professionals who have advanced practical abilities, leadership skills in clinical work, and clinically oriented research know-how as they forge the foundations to excel as outstanding educators and global and interdisciplinary leaders in research and practical applications.

Doctor's Course

This course is designed to develop individuals who were groomed through the Master's Course and who can work as dedicated professionals and clinical researchers while manifesting the aptitude needed to excel as international leaders in international and interdisciplinary research and practical applications of such research, while likewise shouldering the burdens of educating and developing outstanding medical practitioners, researchers, and fellow educators.

Doctoral Programs (Master's Course-Doctor's Course)

Comprehensive Health Nursing Sciences

Community Health and Home Care Nursing

Community Health Nursing
Home Care Nursing
Reproductive Health Nursing

Mental Health and Psychiatric Nursing

Nursing Function and Care Management

Fundamental Nursing and Life Support
Child and Family Nursing

Critical and Invasive-Palliative Care Nursing

Gerontological Nursing and Health Care System
System Management in Nursing

Health Care Education and Development

Analytical Health Science
Health Education
International Nursing Development

Biomedical Laboratory Sciences

Life Sciences and Bio-informatics

Biochemistry and Biophysics
Anatomy and Physiological Science
Biofunctional Informatics
Biophysical System Engineering

Moleculo-genetic Sciences

Analytical Laboratory Chemistry
Microbiology and Immunology
Molecular Pathology
Laboratory Molecular Genetics of Hematology
Advanced Analytical Chemistry

Graduate Schools

Biomedical Science PhD Program

Doctoral Programs (Master's Course-Doctor's Course)

Bioinformatics

Functional Biology

Faculties

Faculty of Medicine

School of Medicine

School of Health Care Sciences

Nursing Science

Medical Technology

Mission Statement

The Faculty of Medicine was established in 1951 and now consists of the School of Medicine and the School of Health Care Sciences. Subjects taught at the School of Medicine include Functional Morphology, Physiology and Pharmacology, Molecular Genetics, Infectious Immunology, Pathology, Environmental Social Medicine, Comprehensive Diagnostics, Internal Medicine, Pediatric Medicine, Neurology and Psychiatry, Surgery, Sensory Organ Sciences, Dermatology and Plastic Surgery, Female Medicine and Urology and Reproductive Medicine. School of Health Care Sciences includes two courses of Nursing Science and Medical Technology. Subjects of the former are Fundamental and Clinical Nursing and Community Health Nursing. Subjects of the latter are Laboratory Science and Laboratory Technology.

The School of Medicine and the School of Health Care Sciences welcome talented students who will become leaders in medical science and treatment not only in the future Japan but also in the future world. Furthermore, we seek students of lively imagination, with deep consideration for others and



M&D Tower

with strong spirit for contribution to people's welfare.

Based on the three fundamentals of educational philosophy of Tokyo Medical and Dental University (TMDU), all staff in the School of Medicine concentrate on training students to obtain academic and medical knowledge, high professional skills in clinical medicine, a researcher's mind, a heart full of humanity, and excellent insights. We hope that many of our students will contribute to our and international societies.

The School of Medicine has been improving its educational curriculum in recent years, introducing a tutor system in problem-based medicine, the MD-PhD course, the TMDU-Imperial College (London) Student Exchange Program and other international exchange programs, the Harvard Medical School Externship program for 8-11 selected students every year, the project semester program for learning basic research for the 4th-year students, and clinical clerkship for the 5th- and 6th year students.

The philosophy of the School of Health Care Sciences is based on sound knowledge and a high moral and ethical standard. We aspire to the development and personal training of health care professionals who possess originality and creativity in their ideas. The school offers professional education in nursing science and laboratory science based on an interdisciplinary approach.

Currently running projects in the Faculty of Medicine include "Human Resource Development Plan for Cancer," which is a training program for specialists in cancer in collaboration with Graduate School, "Program to Create an Infectious Diseases Research Center" which involves extensive research of emerging and re-emerging infectious diseases at the research center (Noguchi Memorial Institute for Medical Research) in Ghana, West Africa, and "Special Funds for Education and Research" which offers students medical education that meets the highest global standards.

Faculties

Faculty of Dentistry

School of Dentistry

Mission Statement

The educational philosophy of the School of Dentistry is primarily to foster dentists who can promote and maintain health by faithfully providing comprehensive dental care and contributing to the development of dental medicine and service from a global perspective. We deem it our mission to educate dental students who have attained the following goals at the time of graduation:

- 1. Acquire a broad range of general knowledge and have wide experience, so as to become a dentist with a rich sense of humanity.
- 2. Understand scientific principles and concepts and acquire knowledge in bioscience.
- 3. Have an inquiring mind to enable the independent discovery of problems and the solutions thereto.
- 4. Acquire knowledge and basic skills necessary for the prevention, diagnosis and treatment of diseases in the oral and maxillofacial regions, based on a deep understanding of normal and pathologic general conditions.
- 5. Fully understand the importance of the role of dental medicine and dental care in society.

School of Oral Health Care Sciences

Mission Statement

The educational philosophy of the School of Oral Health Care Sciences is to promote professional leaders with kind and well-rounded humanity, based on knowledge and technology of oral health and welfare, who can contribute to society for people's healthy and happy lives. The following goals are to be met by graduation:

- 1. Understand the dignity of life as well as scientific principles and concepts, and acquire knowledge in bioscience.
- 2. Respect fundamental human rights and acquire the ability to associate with people who understand the way other people feel and behave.
- 3. Understand the role and importance of oral health and welfare in society.

Oral Health Care Sciences

- | | |
|---------------------------------------|--|
| Lifetime Oral Health Care Sciences | Oral Health Care Science for Community and Welfare |
| Oral Care for Systemic Health Support | Oral Health Care Education |
| Preventive Oral Health Care Sciences | Basic Sciences of Oral Health Care |

Oral Health Engineering

- | | |
|--|--|
| Fundamental Oral Health Engineering | Oral Materials Science and Technology |
| Basic Oral Health Science | Oral Health Information Technology |
| Comprehensive Oral Health Engineering | Oral Biomaterials Engineering |
| Oral Clinical Science | Oral Prosthetic Sciences |
| | Fixed Prosthetic Engineering |
| | Oral Prosthetic Engineering |

Affiliated Educational and Research Facilities

School of Dental Technologists

Provide high level technology to dental technologists.

College of Liberal Arts and Sciences

Mission Statement

To become health professionals and citizens who can contribute to a global society, students need to develop the intellectual capacity to appreciate diverse cultures and values, and the emotional capacity to understand and empathize with others. In addition, these students need to learn about ethical standards and improve their ability to communicate with others.

To develop such students is the responsibility of the College of Liberal Arts at TMDU, the only national university in Japan with a faculty of liberal arts. To serve our institution's mission as a graduate university, we have the following aims for students in the College:

- 1. To develop as civic-minded professionals who can participate in a global society.
- 2. To develop the scientific and analytic mindset needed both to identify and solve problems.
- 3. To acquire the communication skills required to contribute to the global healthcare profession.
- 4. To acquire the strong foundation needed to support future study.

Human Sciences

- Humanities and Social Sciences
 - Philosophy
 - Literature
 - Sociology
- Health Sciences and Physical Education

Natural Sciences

- Mathematics
- Physics
- Chemistry
- Biology

Foreign Languages

- English
- Additional Foreign Languages
 - German
 - French
 - Chinese



Hippocrates Hall



Champ de Causerie

Research Institutes

Institute of Biomaterials and Bioengineering

Mission Statement

The Institute of Biomaterials and Bioengineering (IBB) was originally established in 1951 as the Research Institute of Dental Materials with the aim of developing innovative dental devices and materials. After being reorganized into the Institute for Medical and Dental Engineering in 1966, the Institute was given its present name in 1999. In 2012, the IBB took its present shape of having 4 large divisions consisting of 12 departments and the newly opened Medical and Dental Device Technology Incubation Center. Since its establishment, the IBB has been contributing to the development of biomaterials and medical devices as an international forerunner through the harmonizing of engineering and technological science with medical and dental sciences.

In particular, the IBB has been promoting three objectives in order to expand and deepen the basic science for biomaterials and bioengineering since 2004, when Tokyo Medical and Dental University was reorganized into a national university corporation, leading to the development of applied science and technologies for the advanced medicine and dentistry:

- (A) An inquiry into Nano-Bioscience for Advanced Medicine and Dentistry
- (B) The creation of Bio-Inspired Biomaterials for New Clinical Applications
- (C) The development of Bio-System Engineering for Advanced Medical and Dental Devices

While the research environment around us is drastically and rapidly changing, the IBB has been making continuous efforts to take a leading role as an international center of excellence of biomaterials and bioengineering.

Biomedical Materials

- Metallic Biomaterials
- Inorganic Biomaterials
- Organic Biomaterials

Biofunctional Restoration

- Material Biofunctions
- Material-based Medical Engineering
- Biomechanics

Medical Devices

- Bioelectronics
- Biomedical Information
- Biomedical Devices and Instrumentation

Biomolecular Chemistry

- Medicinal Chemistry
- Chemical Bioscience
- Organic and Medicinal Chemistry

Medical and Dental Device Technology Incubation Center



Institute of Biomaterials and Bioengineering



Street view of the IBB

Research Institutes

Medical Research Institute

Mission Statement

Our research focus is to tackle issues in medical science with the hope of contributing to the development of measures for patients who are suffering from intractable diseases. These disorders include metabolic, neurological, psychiatric, cardiovascular, loco-motor, immunological, genetic, infectious and neoplastic diseases. The pathophysiological bases of these diseases should be understood on the bases of molecular analyses of the malfunction and impaired regulation of homeostasis.

State-of-the-art science into the cellular and molecular mechanisms operating in the life of basic organisms as well as humans has been sought vigorously in our institute and this activity has been continuously expanding in recent years. This is reflected in our record of recent publications as well as the amounts of major grants obtained in the field of medical science including the participation of many staff members of our institute in the 21st Century COE program of our university. The strength of the Medical Research Institute also lies in its close ties with the newly commenced graduate school system. The number of young investigators in our institute has increased significantly and the new educational system has been attracting attention of the medical science society.

The activity of our institute has been international. We have established scientific ties with a number of overseas universities and institutions such as Harvard University in addition to the various international collaborations in our research activities, we have been accepting many visitors worldwide including scientists from major institutes. International symposiums and seminars have been constantly held to provide cutting edge knowledge in medical science but also opportunities to establish relationship among young scientists and world top class investigators.

As the Medical Research Institute is growing in a number of respects as a young institution in the field of molecular medical science, we are welcoming everyone who is interested in joining us in our endeavor to seek for the clues to cure patients with intractable diseases in the future by unraveling the great mysteries of nature.

Advanced Molecular Medicine

- Molecular Medicine and Metabolism
- Molecular Pharmacology
- Molecular Cell Biology
- Molecular Neuroscience
- Biodefense Research
- Bio-informational Pharmacology
- Stem Cell Regulation
- Structural Biology
- Frontier Research Unit Oxygen Biology
- Tenure Track Unit Cellular and Molecular Medicine

Pathophysiology

- Neuropathology
- Pathological Biochemistry
- Pathological Cell Biology
- Developmental and Regenerative Biology
- Stem Cell Biology
- Immunology
- Molecular Pathogenesis
- Frontier Research Unit Virology
- Project Research Unit Stress Bio-Marker Research

Medical Genomics

- Molecular Cytogenetics
- Molecular Genetics
- Molecular Epidemiology
- Biochemical Genetics
- Genomic Pathology
- Epigenetics
- Bioinformatics
- Frontier Research Unit Redox Response Cell Biology
- Project Research Unit Neuroinformatics

Biosystem Generation

Pathogenetic Regulation

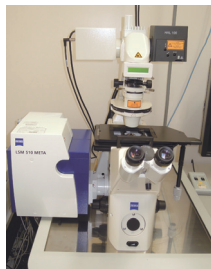
Integrative Research

Advanced Technology Laboratory

- Genome Laboratory
- Laboratory of Cytometry and Proteome
- Laboratory of Recombinant Animals
- Laboratory of Anatomy and Cell Function
- Bioresource Laboratory
- Laboratory for Structure Analysis
- Stem Cell Laboratory



Genome Laboratory



Laboratory of Anatomy and Cell Function



Laboratory of Cytometry and Proteome



Bioresource Laboratory

Library and Media Information Technology

Institute for Library and Media Information Technology

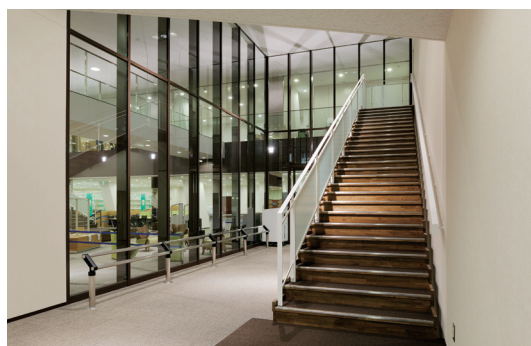
Mission Statement

The Institute for Library and Media Information Technology was established to collect, organize, manage, provide, and use publications and other essential materials with information on dentistry and medicine required for education, research, and studies at TMDU. It also strives to promote the development of educational media related to dentistry and medicine and the comprehensive use of information technology.

The way of using information in our university has changed greatly in tandem with advances in digitalizing academic data. As a core body for the institute responsible for handling academic information at TMDU, the institute continues changing in tune with the times, ensuring that we have the full spectrum of electronic materials required for research at TMDU, collecting publications that fulfill study requirements, and providing information systems to support the latest teaching methods. We also disseminate research results through research databases and repositories, improve the convenience by implementing the unified user authentication and the institutional composite portal site, and strengthen data security to the maximum extent.

Department of Educational Media Development

The Institute for Library and Media Information Technology's faculty organization: It conducts research related to the development and use of computer simulation-based educational systems, and use of e-learning systems and educational media in medical and dental education.



Lobby of the TMDU Library M&D Tower, 3F)

Library / Kounodai Branch Library

The TMDU libraries handle the following: Administration of specialized publications and periodicals related to dentistry and medicine (Main library) and liberal arts and sciences publications (Kounodai Branch Library), provision of electronic journals and publications and academic databases, provision of interlibrary loan (ILL) services, full range of services for library visitors and network users, maintenance of the libraries' environments, editing of the University and College of Liberal Arts and Sciences journals, and the curation of rare books.

(Fiscal Year 2012)

	Main Library Weekdays 8:30–22:00 Holidays 10:30–18:30	Kounodai Branch Library Weekdays 9:00–20:00
Library Holdings	214,889	89,343
Floor Space	2,222m ²	280m ²
Seats	301	125
Visitors	146,011	15,845
E-Journals	7,952	-
E-Books	316	-
Data Base	11	-

Information Technology Division

Management and maintenance of the information and communication infrastructure of the University Technical supervision of information under the control of the Institute.

Mission Statement

According to the sharp increase of demands on service and security in the academic information and communication infrastructure, Information Technology Division of the Institute for Library and Media Information Technology has been promoting the enhancement of performance and security of the University local area network and local servers, and implementing the unified user authentication and the institutional composite portal site.

In addition, the Division supervises technical aspects of the University WEB site, the individual database for researchers, and the University Repository.

Multimedia Education Division

The division handles the following: ICT backup related to education at TMDU, including management and implementation and support for the use of Web Class, Net Academy, and other forms of e-learning for educational purposes; administration of computer-based testing (CBT) servers; management of PCs used for educational purposes; computer simulation education; data literacy education (document searches, copyrights, and data security); support for the recording, transmission, and simulcast of lecture videos; video content production; and provision of network environments within the libraries.

Student Support and Health Administration

Student Support and Health Administration Organization

Supporting students and women, promoting a healthy working environment, and planning welfare programs for students.

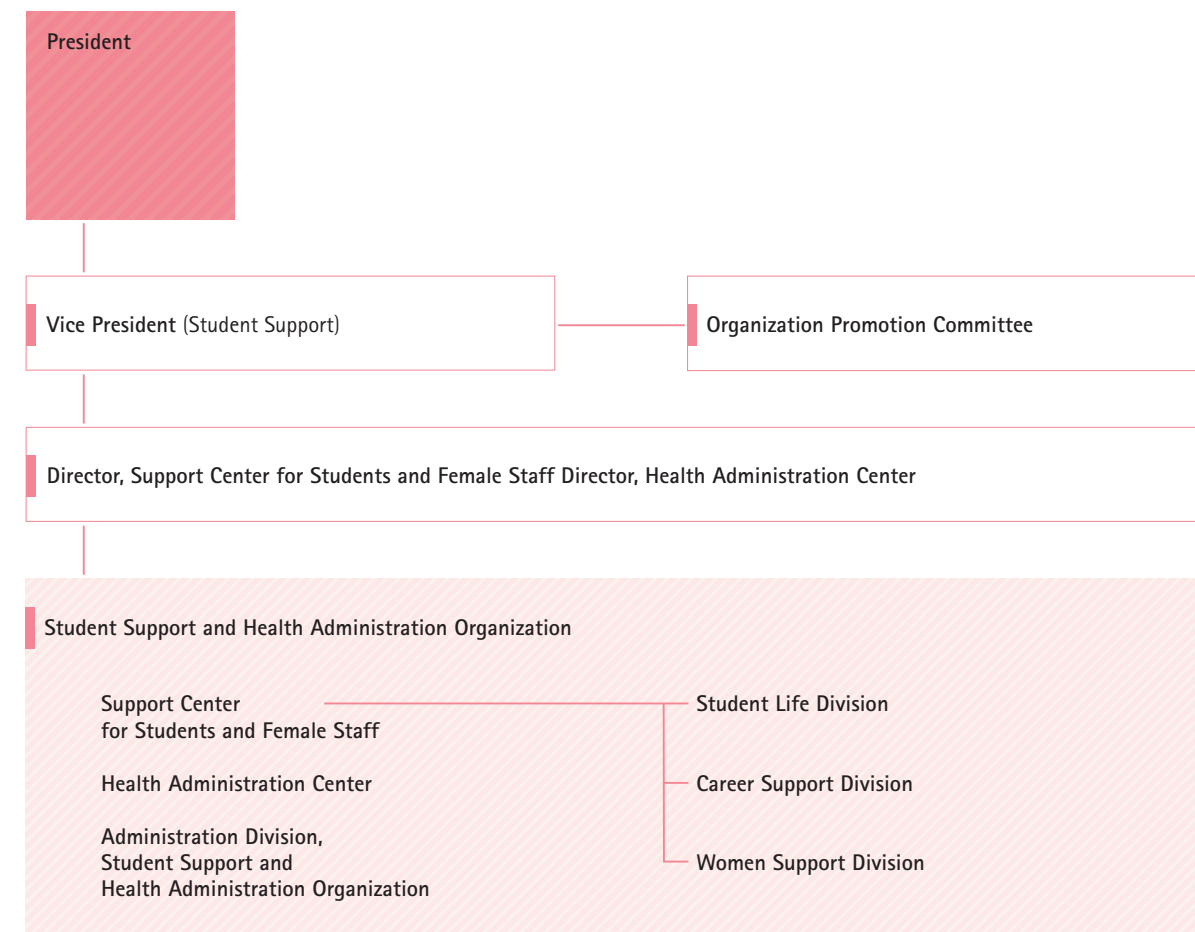
Support Center for Students and Female Staff

Supporting students' campus life – daily life, school work, career options, counseling for mental health issues and harassment, as well as promoting other student support activities.

The Center also implements plans for supporting research activities and work – life balance for female researchers, including graduate students.

Health Administration Center

Improving healthcare management at the university and promoting the health of students and faculty.



Research & Industry Collaboration

Research and Industry–University Alliance Organization

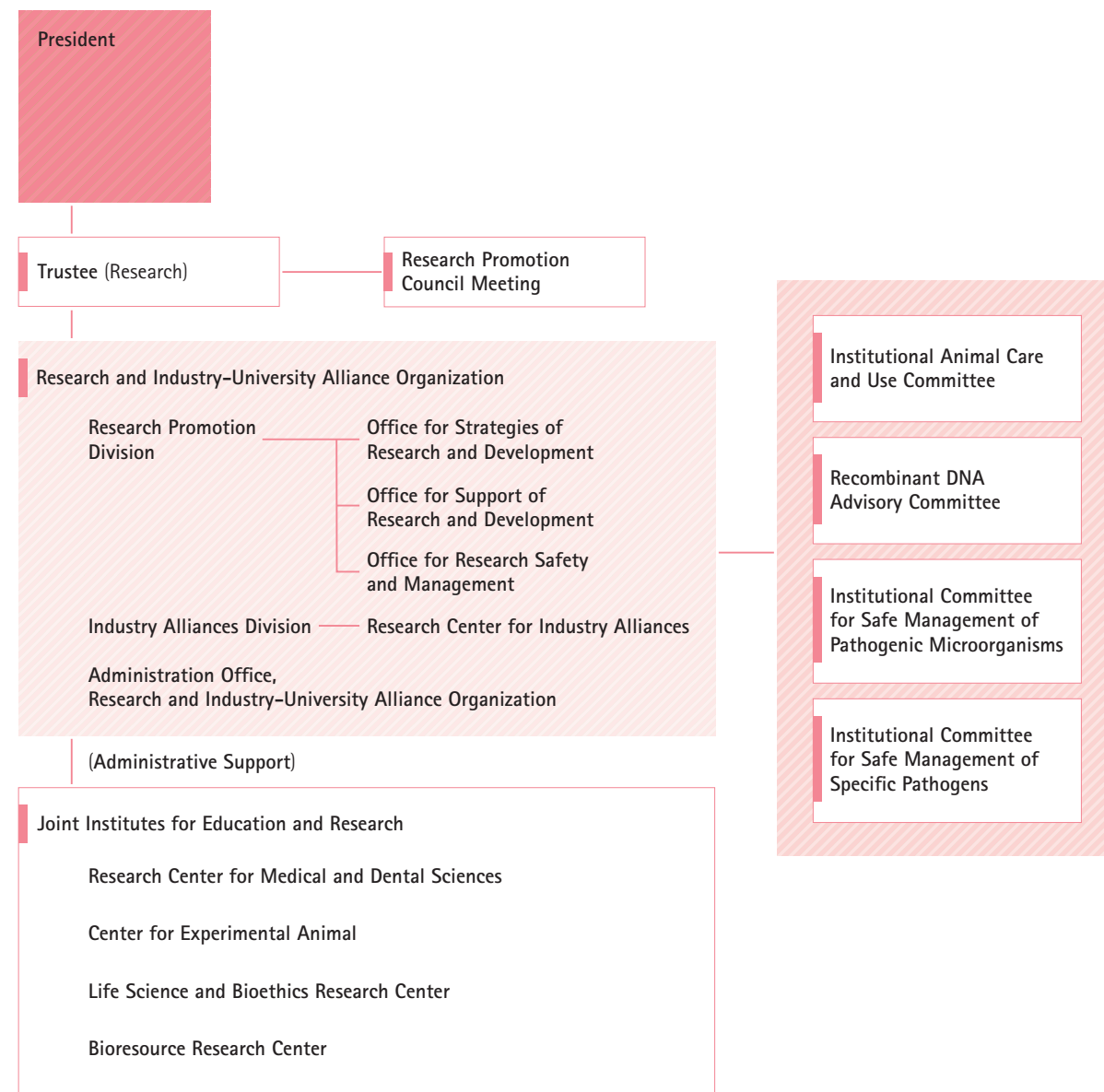
Supporting the promotion research activity, the planning of research activity and the creation / protection / management /exploitation of intellectual property.

Research Promotion Division

Supporting the promotion of research activity and the planning of research strategy.

Industry Alliances Division

Supporting research activity through the promotion of intra-/international alliances and contributing to society through the planning of research strategy and the creation/ protection/management/exploitation of intellectual property.



University Hospitals

Medical Hospital

Dental Hospital

Mission Statement

The Medical Hospital is committed to providing excellent patient care as well as advanced medical technology to the community. The mission of the Dental Hospital includes developing world-class staff as well as providing excellent dental care tailored to individual patient's needs. The success of these missions requires (1) the practical training of faculty, staff, students, and trainees and (2) innovative scientific research and breakthrough discoveries. Each member of Tokyo Medical and Dental University is devoted to accomplishing our missions by delivering high quality patient care, education, and research while respecting the human spirit.

Our ultimate goal is to provide the highest quality medical care and scientific knowledge in the future, which includes:

1. To provide patients with the best possible medical care and enable them to enjoy their daily life and health to the utmost extent.
2. To reduce the likelihood of illness with the application of new findings in preventive medicine and clinical studies.
3. To improve the cure rate of illness with the swift application of new findings from clinical trials.
4. To educate medical professionals who are sensitive to society's needs.
5. To train medical professionals who can offer clinical training for students in their internship in the TMDU teaching hospitals and other affiliated hospitals.

6. To develop medical educators and researchers who have vision for the future, and who can advance medical education and practice for coming generations.

In line with these general purposes, we have the following specific aims:

1. To provide a well-organized learning environment with multiple attending teaching staff and a variety of clinical experiences for undergraduate and postgraduate education.
2. To provide patients with safe and high quality medical care.
3. To develop cooperative relations with central hospitals in the Tokyo area, as well as establishing a support system for providing significant medical contributions to the global community.
4. To conduct collaborative studies including clinical trials with other affiliated hospitals, and widen the coverage of high quality medical care.
5. To promote an effective intercollegiate research environment and bring our intellectual resources in cutting-edge medical science to society.
6. To establish efficient and economical management of the hospitals and help bring medical security to the nation.



Medical Hospital
(Medical Building A)

Dental Hospital
(Dental Building South)

University Hospitals

Medical Hospital Beds: 763

Hospital Departments

Departments of Internal Medicine

Hematology	Geriatrics
Medicine and Rheumatology	Gastroenterology and Hepatology
Diabetes, Endocrinology and Metabolism	Cardiovascular Medicine
Nephrology	Pulmonary Medicine

Departments of Surgery

Esophageal and Gastric Surgery	Vascular Surgery
Colorectal Surgery	Cardiovascular Surgery
Hepato-Biliary-Pancreatic Surgery	Thoracic Surgery
Breast Surgery	Urology
	Head and Neck Surgery

Departments of Sensory, Motor System Medicine and Dermatology

Ophthalmology	Plastic, Reconstructive and Aesthetic Surgery
Oto-Rhino-Laryngology	Orthopaedic Surgery
Dermatology	

Departments of Pediatrics, Maternal and Woman's Clinic

Pediatrics	Clinical Genetics Division
Maternal and Woman's Clinic	

Departments of Neurology, Neurosurgery and Neuropsychiatry

Neurosurgery	Psychosomatic and Palliative Medicine
Neurology	Anesthesiology and Pain Clinic
Endovascular Surgery	
Neuropsychiatry	

Departments of Radiology

Diagnostic Radiology and Oncology

Trauma and Acute Critical Care Medical Center

Department of Insured Medical Care Management

Quality Management Section

Infection Control Section

Central Clinical Facilities

Department of Pharmacy	Clinical Research Center
Clinical Laboratory	Center for Postgraduate Medical Education
Operating Center	Hyperbaric Medical Center
Radiological Center	Medical Engineering Center
Hospital Blood Transfusion Center	Center for Cell Therapy
Physical Medicine Center	Center for Minimally Invasive Surgery
Intensive Care Unit	Heart Rhythm Center
Supply Unit	Clinical Center for Pleasant Sleep
Maternal Fetal Medicine Division	Sports Medicine Clinical Center
Department of Pathology	Department of Intractable Disease Treatment
Department of Endoscopy	Cancer center
Department of Medical Informatics	Department of Medical Records
Department of Blood Purification	Department of Nutrition
Department of General Medicine	
Center for Medical Welfare and Liaison Services	

Department of Nursing

University Hospitals

Dental Hospital Beds: 60 Chair Units: 317

Hospital Departments

Clinics for Dentofacial Growth and Development

Orthodontics	Pediatric Dentistry
--------------	---------------------

Clinics for Conservation of Oral and Maxillofacial Function

Operative Dentistry and Endodontics	Psychosomatic Dentistry Clinic
Periodontics	Temporomandibular Joint Clinic
Orofacial Pain Clinic	

Clinics for Oral and Maxillofacial Rehabilitation

Oral Surgery	Maxillofacial Prosthetics
Maxillofacial Surgery	Sports Dentistry
Prosthodontics	Speech Clinic
Dental Clinic for Sleep Disorders (Apnea and Snoring)	Dental Implant Clinic

Clinics for General Dentistry

Oral Diagnosis and General Dentistry	Special Care Clinic
General Dentistry I	Dysphagia Rehabilitation
General Dentistry II	Fresh Breath Clinic
General Dentistry III	Cleanroom
Ambulatory Anesthesia Service	Oral Health Care
Oral and Maxillofacial Radiology Clinic	Dental Allergy

Central Clinical Facilities

Clinical Laboratory	Center for Clinical Cooperation
Dental Laboratory	Center for Dental Information
Section of Clinical Safety Management	Center for Development of Devices and Drugs in Dentistry
Section of Infection Control	Division of Surgical Operation
Section of Clinical Information Management	Dental Ward
Center for Advanced Dental Clinical Education	Section of Central Supplies

Department of Pharmacy

Department of Nursing

Department of Dental Hygiene

Nationwide Joint Institutes

Center for Education Research in Medicine and Dentistry

Research on the Model Core Curricula in Medicine and Dentistry, educational evaluation methods, and other matters regarding the improvement of the Japanese educational system for physicians and dentists.



Left: Clinical Skills Laboratory I Training of medical procedure using a simulator (e.g. endoscopic surgery)
Right: Clinical Skills Laboratory II Training of dental procedure using a simulator

Joint Institutes for Education and Research

Research Center for Medical and Dental Sciences

Human Gene Sciences Research Division

Research and education of disease related genes.

Instrumental Analysis Research Division

Development, research and education of the technology for advanced measurement and analysis. Promotion of individual utilization of shared analytical equipments and analysis service offer.

General Isotope Research Division

Education and research on radiology and radioisotope medicine.

Advanced Young Researchers Incubation Division

Promoting independent research opportunities for young researchers.

Center for Experimental Animal

Analysis of diseases and studies of animal care for medical use.

International Exchange Center

To integrate affairs related to the international exchange area, and to support the school's promotion of international exchange.

Life Science and Bioethics Research Center

Implementing bioethics education and supporting clinical research planning.

Center for Interprofessional Education

Promoting comprehensive education for health professionals in an aging society by utilizing educational resources in the university. Compiling new undergraduate curricula in medicine and dentistry with an emphasis on a tighter integration between medicine and dentistry, and establishing a system for their effective and efficient management.

Bioresource Research Center

Banking tissue, serum and/or DNA from participants together with the clinical information to facilitate the translational research in the field of personalized medicine as well as future joint research between industry and academia.

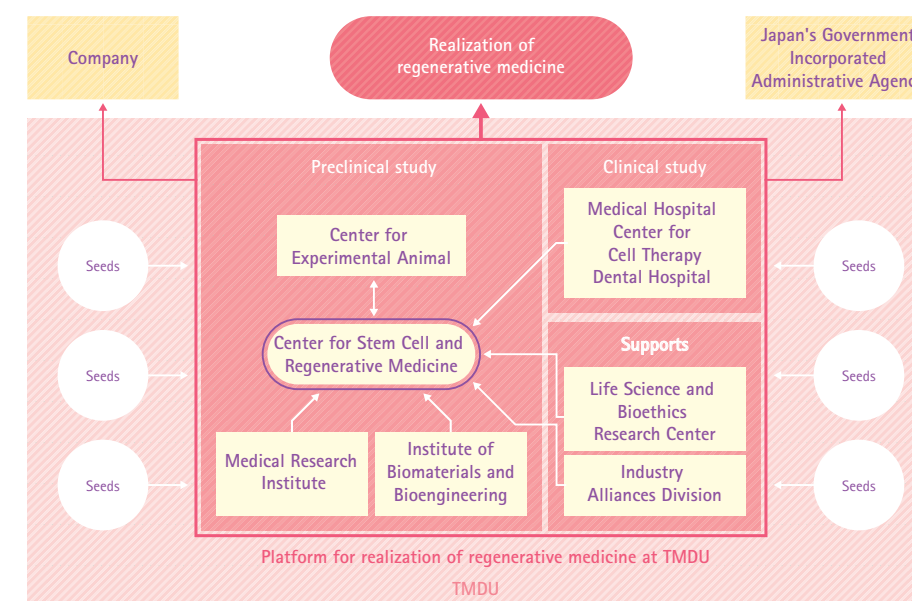


Large-scale liquid nitrogen tanks for preservation of human bioresources

Other Institutes

Center for Stem Cell and Regenerative Medicine

Promoting translational researches and developing human resources for regenerative medicine.



Center for Sports Medicine and Sports Dentistry

Through this Center, the Medical Hospital and the Dental Hospital cooperate closely to provide a multidisciplinary approach to treating diseases and injuries endemic in sports. The information shared between the two hospitals leads to advances in basic and clinical research, which in turn lead to improved diagnosis, treatment, and further research. The Center also supports the development of advanced medical technology in the sports medicine and dentistry areas so as to help top-class athletes prevent injuries and perform to the best of their abilities.

Health Administration Office for Employees

Providing professional services to support the safety and health of employees.

Hospital Administration Planning Division

Analysis and management of planning, execution, and the financial condition of the financial management strategy of the university hospitals.

Educational Program

Program for Leading Graduate Schools	
Disaster Nursing Global Leader Degree Program	<div>Program Leader of TMDU</div> <div>Tomoko INOUE</div> <div>Dean, Graduate School of Health Care Sciences</div>
Program for Promoting Inter-University Collaborative Education	
Establishment of DPSC based on the Tokyo Consortium (DPSC: Disease Prevention Science Course)	<div>Program Leader</div> <div>Hiroyuki KAGECHIKA</div> <div>Vice Dean, Graduate School of Medical and Dental Sciences</div>
Standardization and Nation-wide Implementation of Responsible Conduct of Research Education (CITI Japan Project)	<div>Program Leader of TMDU</div> <div>Yasuhito YUASA</div> <div>Dean, Graduate School of Medical and Dental Sciences</div>
Project for Promotion of Global Human Resource Development	
Think Globally: Nurturing skills and perspectives of future healthcare professionals	<div>Project Leader</div> <div>Yujiro TANAKA</div> <div>Dean, Graduate School of Medical and Dental Sciences</div>
Re-Inventing Japan Project	
Inter-University Exchange Program toward Medical and Dental Networking in Southeast Asia	<div>Program Leader</div> <div>Junji TAGAMI</div> <div>Vice Dean, Graduate School of Medical and Dental Sciences</div>
New Paradigms – Establishing Centers for Fostering Medical Researchers of the Future	
●Fostering Human Resources for Producing Medical Innovation	
Creating Medical Innovators - a Whole-brain Approach to Healthcare	<div>Program Leader</div> <div>Yasuhito YUASA</div> <div>Dean, Graduate School of Medical and Dental Sciences</div>
Promotion Plan for the Platform of Human Resource Development for Cancer	
Training program for cancer therapy promoting specialists of next generation	<div>Program Leader</div> <div>Yasuhito YUASA</div> <div>Dean, Graduate School of Medical and Dental Sciences</div>
Fostering Global Physicians – Reform of Medical Education by Balancing Basic Research and Clinical Practice	
●Fostering Physicians in Basic Research for Coping with Advancing Sophistication of Medicine and Medical Care	
Seamless Support for Cultivating World-class Researchers	<div>Program Leader</div> <div>Yasuhito YUASA</div> <div>Dean, Graduate School of Medical and Dental Sciences</div>
●Implementation of Medical and Dental Education Certification System	
Establishment of Accreditation System for Medical Education in Japan based on the Global Standards	<div>Program Leader</div> <div>Nobuo NARA</div> <div>Director, Center for Education Research in Medicine and Dentistry</div>

●Implementation of Medical and Dental Education Certification System	
Research on the establishment of dental accreditation system in Japan	<div>Program Leader</div> <div>Koji ARAKI</div> <div>Professor, Center for Education Research in Medicine and Dentistry</div>
Development of Human Resource System for Nurses	
Development of The IKASHIKA Career Path for Nurses based on Mentorship and Problem-based Learning	<div>Program Leader</div> <div>Tomoko KOMUTA</div> <div>Director of Nursing, Medical Hospital</div>
Research Program	
Program for Promoting the Improvement of Research Universities	
TMDU program for promoting the improvement of research university	<div>Program Leader</div> <div>Ikuo MORITA</div> <div>Trustee (Research) / Vice President</div>
Japan Initiative for Global Research Network on Infectious Diseases (J-GRID)	
Strategic promotion of collaboratory research on infectious diseases between Ghana and Japan	<div>Program Leader</div> <div>Nobuo OHTA</div> <div>Professor, Graduate School of Medical and Dental Sciences</div>
Science and Technology Research Partnership for Sustainable Development (SATREPS)	
Studies of Anti-viral and Anti-parasitic Compounds from Selected Ghanaian Medicinal Plants	<div>Program Leader</div> <div>Shoji YAMAOKA</div> <div>Professor, Graduate School of Medical and Dental Sciences</div>
Research Center Network for Realization of Regenerative Medicine	
●Centers for Clinical Application Research on Specific Disease / Organ (Type B)	
Center for the development of cultured intestinal stem cell-based mucosal regeneration therapy for inflammatory bowel diseases	<div>Field Leader</div> <div>Mamoru WATANABE</div> <div>Professor, Graduate School of Medical and Dental Sciences</div>
●Projects for Technological Development	
Development of novel quality assurance technique applied to tissue-engineered medical products from iPS cells and somatic stem cells	<div>Principal Investigator</div> <div>Tomohiro MORIO</div> <div>Associate Professor, Graduate School of Medical and Dental Sciences</div>
●Highway Program for Realization of Regenerative Medicine	
Meniscus Regeneration by Mesenchymal Stem Cells Derived from Synovium	<div>Principal Investigator</div> <div>Ichiro SEKIYA</div> <div>Director, Center for Stem Cell and Regenerative Medicine</div>

Research Program

Funding Program for Next Generation World-Leading Researchers (NEXT Program)

Development of Postgraduate Educational Program for Mid-Level Providers (Advanced Practice Nurses) and the Innovation of a Healthcare Delivery Model	Project LeaderTomoko INOUE Dean, Graduate School of Health Care Sciences
Elucidation of the Mechanisms of Hair Follicle Ageing by Focusing on Stem Cells	Project LeaderEmi NISHIMURA Professor, Medical Research Institute

Strategic Research Program for Brain Sciences

●Development of Biomarker Candidates for Social Behavior

Development of Neurodevelopmental Analyses and Molecular Markers for the Pathogenesis and Pathophysiology of Schizophrenia	InvestigatorToru NISHIKAWA Professor, Graduate School of Medical and Dental Sciences
--	---

●Understanding of Molecular and Environmental Bases for Brain Health

Elucidation of Molecular Bases, Environmental Factors and their Organization in the Brain, Enabling Lifelong Mental and Physical Health			
Field Leader	Hidehiro MIZUSAWA Professor, Graduate School of Medical and Dental Sciences	Investigator	Kohichi TANAKA Professor, Medical Research Institute
		Investigator	Hitoshi OKAZAWA Professor, Medical Research Institute

●Research on Resolving Key Issues in Bioethics

An integrative counseling approach toward ethical issues surrounding brain sciences	InvestigatorMasumi AI Professor, Medical Hospital
---	--

A3 Foresight Program

Epigenetic Signatures in Gastric Carcinogenesis					
Principal Investigator	Yasuhito YUASA Professor and Dean, Graduate School of Medical and Dental Sciences	Chinese PI	Deng Dajun Professor and Director, Department of Aetiology, Peking University School of Oncology, China	Korean PI	Kim Woo Ho Professor, Department of Pathology, Seoul National University College of Medicine, Korea

Core-to-Core Program

●A. Advanced Research Networks

Center of international research platform for biomedical science and drug discovery against intractable diseases	
Core InstituteResearch and Industry–University Alliance Organization	CoordinatorHiroyuki KAGECHIKA Professor, Institute of Biomaterials and Bioengineering

Strategic Young Researcher Overseas Visits Program for Accelerating Brain Circulation

Development of international research center for mechanisms of homeostasis of organs and their impairments	Principal InvestigatorSei SASAKI Professor, Graduate School of Medical and Dental Sciences
Fostering international young leaders in the interdisciplinary area between medical / dental science and engineering through collaboration research on bacterial infections	Principal InvestigatorYuji MIYAHARA Professor, Institute of Biomaterials and Bioengineering

JST Strategic Basic Research Programs (CREST)

	Principal Investigator
Novel Mechanisms of Allergy and its Regulation	Hajime KARASUYAMA Professor, Graduate School of Medical and Dental Sciences
Regulation of Inflammatory Time Axis at the RNA Level	Hiroshi ASAHARA Professor, Graduate School of Medical and Dental Sciences
Development of molecular design and its clinical application of heteroduplex oligonucleotide drug	Takanori YOKOTA Professor, Graduate School of Medical and Dental Sciences
Analysis of Molecular and Cellular Basis of Synapse-Glia-D-Serine System Dysfunction in Schizophrenia toward the Development of Novel Strategies for its Diagnosis and Treatment	Toru NISHIKAWA Professor, Graduate School of Medical and Dental Sciences
Conquest of mucosal immune disorders on the basis of dendritic cell regulation	Toshiaki OHTEKI Professor, Medical Research Institute
Research on Developing Diagnosis and Therapy of Purkinje Cell Degeneration Based on its Molecular Pathogenesis	Hidehiro MIZUSAWA Professor, Graduate School of Medical and Dental Sciences
Creation of bio-transistors for carbohydrates, proteins and DNA analyses	Yuji MIYAHARA Professor, Institute of Biomaterials and Bioengineering
Therapeutics development targeting transcription and DNA damage repair	Hitoshi OKAZAWA Professor, Medical Research Institute
Elucidation of Molecular and Cellular Basis of Synapse-Glia System Dysfunction in Schizophrenia toward Creation of Novel Strategies for its Diagnosis and Treatment	Kohichi TANAKA Professor, Medical Research Institute
Synthesis of small molecules for drug discovery targeting the epigenome	Takamitsu HOSOYA Professor, Institute of Biomaterials and Bioengineering
Study on activation of fibroblasts in rheumatoid arthritis and other rheumatic diseases	Hitoshi KOHSAKA Professor, Graduate School of Medical and Dental Sciences

Other Programs

Overseas Development Support of Japanese Medical Technologies and Services

Overseas research project for distributing Japanese colorectal cancer screening methods	Project LeaderYoshinobu EISHI Professor, Graduate School of Medical and Dental Sciences
---	--

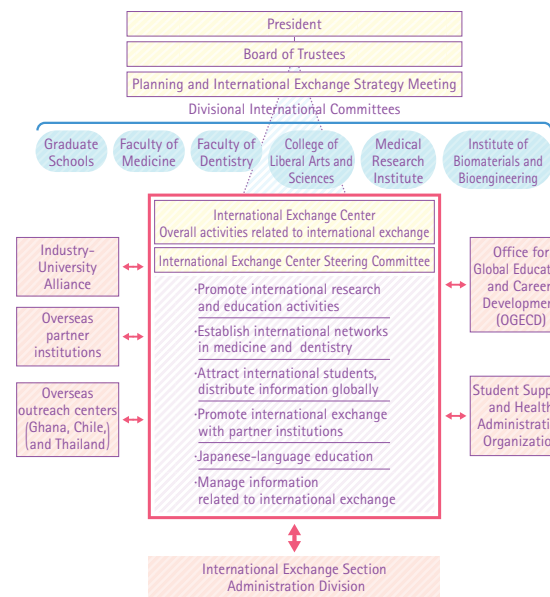
Project for demonstrating academia–industry cooperation index and for establishing advanced model of academia–industry cooperation activity

Research on promoting minimally invasive surgery method by visualization technique	Project LeaderKaori IIDA Professor and Director, Research Center for Industry Alliances
--	--

Project for demonstrating academia–industry cooperation index and for establishing advanced model of academia–industry cooperation activity

Project for establishing valuation basis to promote medical academia–industry cooperation	Project LeaderKaori IIDA Professor and Director, Research Center for Industry Alliances
---	--

In April 2009, the TMDU International Student Center (ISC) was reorganized, given many new responsibilities, and rechristened as the "International Exchange Center", or IEC. One of the newly assumed tasks of the IEC is to facilitate and coordinate the international activities of the various divisions of the university. While each division of TMDU has been actively engaged in international exchange in the past decade, it was decided that it was necessary to set up unified procedures and promote coordination for the most effective implementation of our international endeavors. The IEC is thus expected to set up a system which will enable the leadership of the university to readily use and refer to necessary information on international activities and former international students as part of their decision-making. Encouraging promising students and young researchers to attend TMDU is another important activity of the IEC. We organized our first International Summer Program (ISP) in September 2009, and have held ISPs annually ever since. The number of ISP participants who have become graduate students at TMDU is steadily increasing. The IEC will continue to support and implement an array of activities to promote TMDU's international profile.



Ghana-Tokyo Medical and Dental University Research Collaboration Program

The Gate for International Exchange between Ghana and Japan

Dr. Hideyo Noguchi, the eminent Japanese microbiologist, died of yellow fever in 1928 in Ghana. His activities are the basis of the current exchange between Ghana and Japan, especially in the field of medical sciences. Since its establishment in 2008, the Ghana-TMDU Research Collaboration Center has been expected to have more profound roles in expanding research exchanges between the two countries.

Soon after the Center was established, TMDU dispatched two experts, Professors Ido and Suzuki, to the Ghana-TMDU Center to implement research on HIV/AIDS, African trypanosomiasis and on malaria-transmitting mosquitoes. Research on mosquito-transmitted diseases was added to our project in 2012, including an ecological analysis of mosquitoes that transmit viral hemorrhagic diseases and several virological / epidemiological studies on viral hemorrhagic diseases such as Lassa fever and yellow fever. We are mindful that yellow fever killed Dr. Noguchi 85 years ago in Ghana.

The Asian-African Research Forum is an annual meeting

in which researchers share scientific progress in studies being carried out in Asia and Africa. The meeting is held under the research program of Ministry of Education, Culture, Sports and Technology, and TMDU hosted AARF2013 January 23-24, 2013. One of the main subjects at AARF2013 was "Infectious Diseases in Africa", and researchers from Ghana and Japan presented their research at the meeting. More than 300 researchers from Asia and Africa attended. In addition, TMDU dispatches medical students to Ghana every year to experience medical issues in Africa. The students come back strongly impressed by the state of medicine in developing countries.

In line with the above activities, the Center is expected to promote more intense medical exchanges between Ghana and Japan, and we believe the Ghana-TMDU Research Collaboration Center will prove to be a gate for mutual collaboration in medical sciences and human development between Japan and Africa.



Left: Asian-African Research Forum 2013



Right: Parliamentary Vice-Minister for Foreign Affairs Toshiko Abe and five medical students dispatched from TMDU on a visit to NMIMR in Accra

Latin American Collaborative Research Center, TMDU, Santiago, Chile

TMDU Colorectal Cancer Screening Project: Expanding from Santiago to Other Cities in Chile, and from Chile to Ecuador and Paraguay

The Latin American Collaborative Research Center (LACRC) was established in 2010 by an agreement between TMDU, the Ministry of Health of Chile, and Clinica Las Condes (CLC), the most advanced hospital in Chile.

Three TMDU professionals — an endoscopist, a pathologist, and a molecular biologist — are concentrating their work at LACRC on advancing a national colorectal cancer screening project and cancer research.

The project, although it is still in its pilot stage, is now expanding from Santiago to other cities in Chile, including Punta Arenas, Valparaiso, and La Serena, and it will eventually have a presence in at least eight cities. The endoscopists and pathologists who will participate in the national project will be trained at the Chilean-Japanese Institute for Digestive Diseases in Santiago, and TMDU will give each trainee that successfully completes the course a certificate that will allow participation in the relevant national program.

In a related project, TMDU has been collaborating with the Ministry of Public Health of Ecuador since 2012. Every August, TMDU professors visit Quito and

provide a one-day TMDU-sponsored conference on digestive diseases. In addition, LACRC staff members visit Quito several times a year to provide a one-week training course at the Pablo Arturo Suarez national hospital, where a colorectal cancer screening project is already underway.

TMDU's presence in South America was further illuminated by President Takashi Ohyama's recent visit to Paraguay upon the official invitation from the President of Paraguay. At their meeting, President Ohyama expressed his intention that TMDU will support the colorectal cancer screening project in Paraguay through the activities of LACRC and CLC.

Another important connection between TMDU and South America is that six 4th year TMDU medical students are sent each year to CLC and the University of Chile for a 5-month internship. These internships began in 2010, and a total of 18 students have thus stayed in Chile as researchers during their project semester. To be sure, the students enjoyed the culture, food, and climate that Chile has to offer as well as the work they were able to do in the lab.

Left: Signing the agreement between the Ministry of Health of Chile, CLC, and TMDU.
Middle: A colonoscopy demonstration at CLC by Dr. NISHIKAGE, a visiting doctor from TMDU.
Right: TMDU project semester students with their CLC laboratory colleagues.



CU-TMDU Research and Education Collaboration Center in Thailand

"The 1st Overseas Dental Seminar and Consultation" was held for Japanese residents in Thailand

"The 1st Overseas Dental Seminar and Consultation" was held on September 9, 2012 at the Imperial Queen's Park Hotel, Bangkok. This event was organized by the CU-TMDU Research and Education Collaboration Center as a part of its activities was held with the kind support of the Japan Dental Alumni of Thailand (JDAT).

The Seminar and Consultation was meant to reach students of the Thai Japanese Association School in Bangkok and their parents. Ten TMDU dental students, who were attending at the CU dental training program and who hail from the Schools of Dentistry and Oral Hygiene, helped conduct these activities.

After an opening address by TMDU President Takashi OHYAMA, Professor Ikuko MORIO, Director of the International Exchange Center, gave a speech outlining the history, current projects, and future endeavors of the CU-TMDU Center. After that, eight lecturers from TMDU made presentations on dental topics related to their specialized fields.

While the lecturers were addressing the

schoolchildren, dental consultations for Japanese residents in Thailand were carried out in private compartments by two-person teams consisting of a member of TMDU and a Japanese-speaking Thai dentist (JDAT member) who share the same specialty. In all, 75 Japanese who had particular dental problems or concerns received professional advice from these consultations. Continuing these types of activities and expanding the amount of information available to Japanese residents in Thailand will be critically important future CU-TMDU center activities.

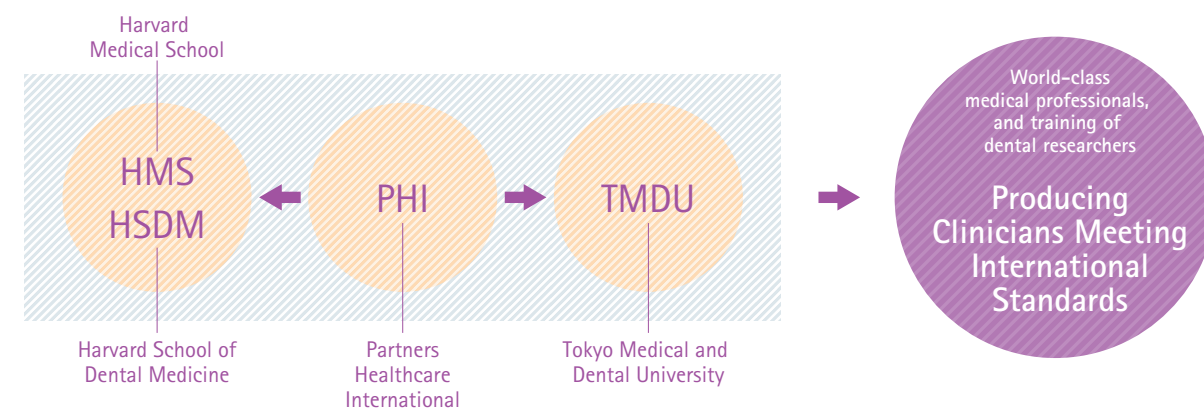


Left: Opening address for the dental seminar and consultation by President OHYAMA
Right: TMDU staff and students and JDAT participants at the dental seminar and consultation

Tokyo Medical and Dental University and Partners Healthcare International – Alliance for Medical Education

Since 2002, TMDU has formed an alliance with Harvard Medical International, Inc. (Partners Healthcare International, since 2012) for medical education. One of the chief missions of this alliance was to create a new model of medical education in Japan in order to meet various needs and challenges we face in the 21st century. Partnering with PHI allowed access to educational resources and expertise of the Harvard Medical School, from which TMDU has learned and implemented a wide variety of new learning methodologies into its curriculum, such as hybrid programs integrating basic science and clinical studies as well as lectures and tutorials, patient-doctor courses, and participatory clinical clerkship.

The alliance with PHI also gave TMDU students with opportunities to participate in clinical clerkship at affiliated hospitals of the Harvard Medical School. Since 2004, highly motivated and qualified students (four to ten) have been selected every year and, after 6 to 9 months of preparatory training, had spent two to three months doing clerkship with Harvard students. Studying together with Harvard students and those from other high-tier medical schools throughout the world, TMDU students have acquired sophisticated clinical skills and approaches, had a hands-on learning of the American healthcare system, and acquired a global mindset.



Student Exchange Program between the Faculty of Medicine, Graduate School, Tokyo Medical and Dental University and the Faculty of Medicine, Imperial College of Science Technology and Medicine

Imperial College

Imperial College London is a science-based university founded in 1907, and its main campus is located in South Kensington in London. It has Faculties of Engineering, Medicine, and Natural Sciences, as well as a School of Business. Imperial College has long enjoyed a high reputation and is consistently rated among the world's top universities, placing second through fourth in university rankings in the United Kingdom, and 10th worldwide.

Exchange Program

The exchange program between TMDU and Imperial College London was launched in 2004. This program provides students with a chance to gain firsthand experience doing world-class research. Credits attained by students at the host institution can be transferred to their home institution. Participants are provided with accommodations and are exempt from tuition fees at the host institution. Participants can enjoy strong and warm support during their stay. The experience of the past nine years has shown that students can gain valuable experience through this exchange program, which has led this program to become very popular and competitive.

From Tokyo to London

Each year, four to five highly motivated and qualified TMDU students have been selected and spent the second semester of their fourth year at Imperial College. Over the last nine years, a total of thirty-two TMDU students have participated in this program.

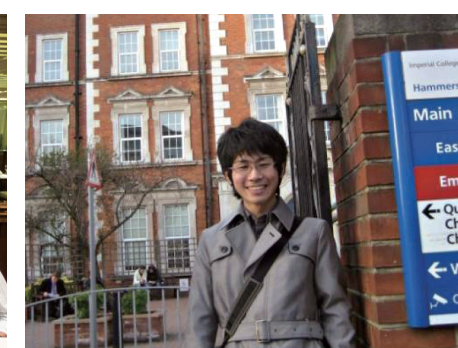
From London to Tokyo

As partial fulfillment of the BSc degree at Imperial College, each student undertakes a three-month research project. Each year, four to five Imperial College students have participated in this program and engaged in research at TMDU. Over the last nine years, a total of thirty-six Imperial College students have participated. Research topics offered at TMDU extend to a wide range of health sciences from which Imperial College students choose one of their interest.

Upper left:
Incoming students (2010)
and Supervisors

Lower left:
President Ohyama and
Incoming students (2010)

Upper right and lower right:
Dispatched students (2010)



International Summer Program (ISP)

To introduce TMDU to the world and attract top international students, especially from Asia, TMDU has held an annual International Summer Program (ISP) from 2009. Each year, the ISP includes lectures by invited overseas leading researchers and TMDU professors, an international symposium, and poster presentations by invited participants as well as TMDU international students. The theme of the fourth ISP (August 26–29, 2012) was Brain and Mind: Neuroscience Up-to-date. The ISP2012 Working Group was chaired by Prof. Hidehiro MIZUSAWA. Due to the leadership of Prof. MIZUSAWA and the support of the members of Working Group, the invited speakers, and the TMDU speakers, ISP2012 was successfully held. Twenty-four participants from 10 Asian countries and regions were invited to ISP2012. (Please see the below table for details.) We are glad to report that several students who participated in the International Summer Program are now TMDU graduate students. As ISP has evolved, the participants have been given more opportunities and a greater amount of time to visit labs and communicate

face-to-face with potential future advisers at TMDU. TMDU professors were very keen to meet invited students even though ISP was held during the summer holidays. The opportunity for TMDU and ISP participants to get to know each other has helped us recruit excellent international students. The number of invited students for ISP who were later admitted to TMDU is increasing.

ISP2013, the fifth annual ISP, was held August 26th – 29th 2013 under the theme of Biomaterials: from the Laboratory to the Clinic. Prof. Kazuo TAKAKUDA of the Institute of Biomaterials and Bioengineering (IBB) was the ISP2013 Committee Chair. As in previous years, ISP2013 provided the opportunity for excellent exchanges between the invited speakers, TMDU professors and the ISP participants. Also, the "Special Selection for ISP International Student PhD Program" was held for the second year. Under this program, ISP2013 participants were able to take an entrance examination for TMDU's Graduate School the day after ISP2013 finished (August 30).

ISP2012 Invited Students / Researchers

Country / Region	Applicants			Invited participants		
	M	F	Total	M	F	Total
Vietnam	3	5	8	2	1	3
China	7	9	16	3	4	7
Bangladesh	4	1	5	1		1
Thailand	1	10	11		5	5
Nepal	2	1	3			0
Malaysia	1	1	2	1		1
Sri Lanka		1	1			0
India	3	2	5	2	1	3
Mongolia		1	1			0
Republic of Korea	1	4	5		1	1
Cambodia	2	2	4			0
Myanmar	1	1	2		1	1
Indonesia		1	1			0
Taiwan	1		1	1		1
Laos	2		2	1		1
Turkey		1	1			0
Total	28	40	68	11	13	24



ISP2012 Social Hour
(M&D Tower, Faculty Lounge, August 28th, 2012)

ISP2009	76 applicants, from 15 countries or regions 35 invited participants, from 11 countries or regions
ISP2010	96 applicants, from 16 countries or regions 26 invited participants, from 14 countries or regions
ISP2011	69 applicants, from 16 countries or regions 23 invited participants, from 14 countries or regions

Undergraduate Overseas Studying Awards

To cultivate professionals with sensitivity and international awareness, TMDU offers Undergraduate Overseas Studying Awards to excellent undergraduate students who wish to undergo overseas training. This award was initiated in 2006 and 66 students, 12 in 2012, have taken advantage of this opportunity to study abroad.

2012 TMDU Undergraduate Overseas Studying Awards

Area	Host Institution	Number of students
Faculty of Medicine School of Medicine 4 th year	USA · Beckman Research Institute of City of Hope · University of California, San Diego	3
	Netherlands · Academic Medical Center, University of Amsterdam	
Faculty of Medicine School of Health Care Sciences 3 rd year	Finland · Seinäjoki University of Applied Sciences	4

Area	Host Institution	Number of students
Faculty of Dentistry School of Dentistry 6 th year	USA / Canada · University of California, San Francisco / McGill University	3
	USA · Harvard School of Dental Medicine / University of Pennsylvania · Harvard School of Dental Medicine	
Faculty of Dentistry School of Dentistry 4 th year		
Faculty of Dentistry School of Oral Health Care Sciences 4 th year	Finland · Metropolia University of Applied Sciences	2
Faculty of Dentistry School of Oral Health Care Sciences 3 rd year	Sweden · Malmö University / Karlstad University	

2012 Postgraduate Overseas Studying Awards

To cultivate leading researchers and highly talented medical personnel, the Postgraduate Overseas Studying Awards program was initiated in 2011. This award is presented to postgraduate students who have achieved excellent research in their field of study and are expected to be excellent researchers in the future.

2012 Postgraduate Overseas Studying Awards






Area	Host Institution
Graduate School of Medical and Dental Sciences	USA · Salk Institute for Biological Studies · University of Minnesota · University of Pennsylvania · Harvard Medical School
	Australia · Australian National University
Graduate School of Health Care Sciences	USA · University of Alabama
	Chile · University of Chile

Studying Abroad during Project Semester

Project Semester is aimed to cultivate fundamental skills that are necessary for medical doctors who have a scientific perspective. The 5-month program is open to undergraduate medical school students who have completed major subjects and experiments and is held in the second semester of the 4th year.

During Project Semester, students study and conduct research at TMDU and overseas collaborating institutions, such as Imperial College (UK), the University of Chile, Clinica Las Condes (Chile), Chulalongkorn University (Thailand), and the Noguchi Memorial Institute for Medical Research, University of Ghana (Ghana).

Students Studying Abroad during Project Semester

Imperial College (UK)		4
University of Chile and Clinica Las Condes (CLC) (Chile)		6
Chulalongkorn University (Thailand)		2
Noguchi Memorial Institute for Medical Research, University of Ghana (Ghana)		5
Others: Institutions in the USA, Australia, and the Republic of Korea		19

Tokyo Medical and Dental University
and Partners Healthcare International –
Alliance for Medical Education

Overseas Affiliated Universities /
Inter- University Agreements

United States of America
· Partners Healthcare International

King of Thailand
· Chulalongkorn University

Republic of Ecuador
· Ministry of Public Health, Ecuador
Republic of Chile
· Clinica Las Condes and
the Ministry of Health of Chile

Overseas Affiliated Universities / Inter-Faculty Agreements

Graduate School of Medical and Dental Sciences (Medical Division) /
Graduate School of Health Care Sciences / Faculty of Medicine

Republic of Finland
· Seinajoki University of Applied Sciences
· University of Tampere
Department of Nursing Science
United States of America
· University of Washington
School of Nursing
· University of Colorado
Denver College of Nursing

United Kingdom of Great Britain
and Northern Ireland
· Imperial College London
Faculty of Medicine
· The University of Sheffield
School of Nursing and Midwifery
Kingdom of Thailand
· Faculty of Medicine,
Chulalongkorn University

Republic of Kazakhstan
· S.D.Asfendiyarov Kazakh
National Medical University
Republic of Ghana
· Noguchi Memorial Institute for
Medical Research
Taiwan
· National Yang Ming University
People's Republic of China
· Tianjin Medical University

Kingdom of Denmark
· University of Copenhagen,
Graduate School of
Pharmaceutical Science
Republic of Chile
· Faculty of Medicine, Universidad de Chile
Republic of Korea
· Seoul National University
College of Medicine

Graduate School of Medical and Dental Sciences (Dental Division) / Faculty of Dentistry

Republic of Korea
· College of Dentistry,
Seoul National University
· School of Dentistry,
Kyungpook National University
· School of Dentistry,
Chonnam National University
Kingdom of Thailand
· Faculty of Dentistry,
Chulalongkorn University
· Faculty of Dentistry,
Mahidol University
· Faculty of Dentistry,
Chiang Mai University
· Faculty of Dentistry,
Prince of Songkla University
· Faculty of Dentistry,
Khon Kaen University
· Faculty of Dentistry,
Naresuan University
· Faculty of Dentistry,
Srinakharinwirot University

People's Republic of China
· College of Stomatolgy, Jilin University
· Stomatology College of
Dalian Medical University
· School of Stomatology,
Peking University
· School of Stomatology,
Capital Medical University
· Tongji University,
School of Stomatology,
· Inner Mongolia Medical College
· West China School of Stomatology
Sichuan University
Taiwan
· College of Oral Medicine,
Taipei Medical University
· School of Dentistry,
College of Medicine,
National Taiwan University,
· College of Dental Medicine,
Kaohsiung Medical University

Republic of Indonesia
· Faculty of Dentistry,
University of Indonesia
Republic of Singapore
· Faculty of Dentistry,
National University of Singapore
Malaysia
· Faculty of Dentistry,
University of Malaya
Kingdom of Denmark
· School of Dentistry,
Faculty of Health Sciences,
University of Copenhagen
Union of Myanmar
· Institute of Dental Medicine, Yangon
Socialist Republic of Vietnam
· University of Odonto-Stomatology, Hanoi
· Faculty of Odonto-Stomatology,
The University of Medicine and
Pharmacy at Ho Chi Minh City
Mongolia
· School of Dentistry,
Health Sciences University of Mongolia
Democratic Socialist
Republic of Sri Lanka
· Faculty of Dental Sciences,
University of Peradeniya

Kingdom of Cambodia
· Faculty of Odonto-Stomatology,
University of Health Sciences,
Phnom Penh Cambodia
Lao People's Democratic Republic
· Faculty of Medical Sciences,
National University of Laos
United Kingdom of Great Britain
and Northern Ireland
· King's College London Dental Institute
Czech Republic
· Masaryk University, Faculty of Medicine
United States of America
· School of Dental Medicine,
University of Pennsylvania
· Harvard School of Dental Medicine
· School of Dentistry, University of
North Carolina at Chapel Hill
· School of Dentistry, University of
California San Francisco
Canada
· Faculty of Dentistry, McGill University
Australia
· School of Dental Science,
Faculty of Medicine,
Dentistry and Health Sciences,
The University of Melbourne

Institute of Biomaterials and Bioengineering

United Kingdom of Great Britain
and Northern Ireland
· Bioengineering Unit,
University of Strathclyde
· Interdisciplinary Research Centre
in Biomedical Materials and Science,
Queen Mary and Westfield College,
University of London
Kingdom of Sweden
· Department of Biomedical
Engineering, Linköping University

Republic of Poland
· Institute of Biocybernetics and
Biomedical Engineering
and International Center of
Biocybernetics,
Polish Academy of Science
Republic of Korea
· Institute for Biomaterials
Research and Development,
Kyungpook National University
People's Republic of China
· School of Stomatology,
Peking University

Medical Research Institute

Republic of Singapore
· Oncology Research Institute,
National University of Singapore
Republic of Korea
· Institute of Molecular Biology and
Genetics, Seoul National University

Kingdom of Thailand
· Faculty of Dentistry,
Chulalongkorn University
French Republic
· École Normale Supérieure de Lyon

Biomedical Science PhD Program /
Graduate School of Biomedical Science /
Medical Research Institute

Republic of Poland
· Medical University of Gdansk
Federal Republic of Germany
· Deutsches Rheuma-Forschun-
gszentrum Berlin
· Humboldt-Universität zu Berlin
· Faculty of Biosciences,
University of Heidelberg
· The Spemann Graduate School of
Biology And Medicine,
University of Freiburg

United Kingdom of
Great Britain and Northern Ireland
· University of Dundee
· College of Medical, Veterinary and
Life Sciences, University of Glasgow
People's Republic of China
· Peking Union Medical College
· Health Science Center
China Medical University
· Shanghai Center
for Bioinformation Technology
Socialist Republic of Vietnam
· University of
Hanoi Medical University, Hanoi

Number of International Students

as of May, 1, 2013

		Graduate Students					Undergraduate Students				Research Students			Japanese Language Course Students	Subtotal		Total		
		Medical and Dental Sciences		Health Care Sciences		Biomedical Science PhD Program	Faculty of Medicine		Faculty of Dentistry		Medical and Dental Sciences	Health Care Sciences		International Exchange Center	National Expense	Private Expense			
Country / Area																			
Asia	Korea		2				1		1							2	2	4	
	China	19	52			3	2		3		4		8		1		22	70	92
	Mongolia	2	1				1								1		3	2	5
	Philippines	3															3	0	3
	Indonesia	2															2	0	2
	Singapore					1											1	0	1
	Vietnam	3	1										1				3	2	5
	Cambodia	2															2	0	2
	Malaysia		2														0	2	2
	Thailand	15	1										1				15	2	17
	Myanmar	2	5										3			1	3	8	11
	Nepal	2	3														2	3	5
	Bangladesh	9	4														9	4	13
	India	2	2														2	2	4
	Sri Lanka	1	1														1	1	2
Europe	Jordan	2															2	0	2
	Saudi Arabia		6														0	6	6
	Yemen	2													2		4	0	4
	Taiwan		6					1				1					0	8	8
	UAE														1		1	0	1
	Belarus	1															1	0	1
	Turky					1											1	0	1
	Poland		1														0	1	1
	Egypt	2					1						1				2	2	4
	Tanzania	1															1	0	1
Africa	Ghana	1															1	0	1
	Sudan	1															1	0	1
	Canada					1	1										1	1	2
	Brazil	1											1				1	1	2
The Americas	Honduras	1											1				1	0	1
	Venezuela	1															1	0	1
	Peru		1														0	1	1
	Subtotal	75	88	0	0	6	5	1	4	1	4	0	16	0	1	5	88	118	206
Grand Total		National Expense		Private Expense		National Expense		Private Expense		National Expense		Private Expense		National Expense				206	
						174		10		17		5							

Number of Staff Members

		Academic Staff					Other Staff				as of May, 1, 2013
	Director	Professor	Associate Professor	Junior Associate Professor	Assistant Professor	Subtotal	Clerk	Co-medical	Nurse	Subtotal	Total
President	1						0			0	1
Trustee	5									0	5
Auditor	2(1)									0	2(1)
Internal Audit Office							3			3	3
Administration Bureau							151			151	151
Graduate School of Medical and Dental Sciences		47	26	25	72	170	0			0	170
Graduate School of Medical and Dental Sciences		33	26	23	76	158	0			0	158
Graduate School of Health Care Sciences		16	7	2	15	40	0			0	40
Faculty of Medicine							73	6		79	79
Medical Hospital		1	7	37	102	147	0	157	700	857	1,004
Faculty of Dentistry		5	1	3	3	12	31	4		35	47
Dental Hospital		0	4	14	21	39	0	55	58	113	152
College of Liberal Arts and Sciences		9	11	0	2	22	5			5	27
Institute of Biomaterials and Bioengineering		12	8	0	16	36	6			6	42
Medical Research Institute		20	24	2	21	67	10			10	77
Institute for Library and Media Information Technology		1	0	0	1	2	20			20	22
Student Support and Health Administration Organization		1	1	0	2	4	8		1	9	13
Health Administration Office for Employees							2			2	2
Research and Industry–University Alliance Organization		0	1	0	0	1	14			14	15
Center for Education Research in Medicine and Dentistry		2	1	1	0	4	0			0	4
Research Center for Medical and Dental Sciences		1	2	1	2	6	2			2	8
Center for Experimental Animal		1	0	0	2	3	0			0	3
International Exchange Center		1	4	0	0	5	9			9	14
Life Science and Bioethics Research Center		1	0	1	1	3	0			0	3
Center for Interprofessional Education		0	2	1	0	3	0			0	3
Bioresource Research Center		1	0	0	0	1	0			0	1
Center for Stem Cell and Regenerative Medicine		1	0	0	1	2	0			0	2
Center for Brain Integration Research		0	2	0	0	2	0			0	2
Hospital Administration Planning Division							5			5	5
Public Relations Division							4			4	4
Number of Staff Members	8	153	127	110	337	727	343	222	759	1,324	2,059(1)

*Note: The numbers in parentheses () indicate part-time directors.

Number of Graduate Students

Graduate School of Medical and Dental Sciences

as of May, 1, 2013													
Specialized Courses	Capacity of Admission	Total Capacity	Master's Program			Doctoral Program					Total		
			1st year	2nd year	Subtotal	1st year	2nd year	3rd year	4th year	Subtotal			
Medical and Dental Sciences	—		0	2	2						2		
Medical and Dental Sciences (MMA Course)	—		0	2	1	2	1				2	1	
Medical and Dental Science and Technology	95	190	106	59	87	52	193	111			193	111	
Medical and Dental Science and Technology (MMA Course)	15	25	18	5	10	7	28	12			28	12	
Medical and Dental Sciences	189	378				242<7>	104	221	83		463	187	463<7>
Life Science and Technology	25	50				15<5>	3	8	1		23<5>	4	23<5>
Oral Health Sciences	—	87				1	1	10<8>	6	46<3>	26	57<5>	114<16>
Maxillofacial and Neck Reconstruction	—	56				1	1	0		22<1>	10	42	65<1>
Bio–Matrix	—	33				0	0			12<2>	4	21<1>	33<3>
Public Health	—	39				0	7<5>	3	23<3>	8	35<5>	16	65<13>
Gerontology and Gerodontology	—	26				0	0			22	10	19	41
Comprehensive Patient Care	—	17				0	0			12	8	17	29
Cognitive and Behavioral Medicine	—	36				0	1	1	13	6	21	6	35
Bio–Environmental Response	—	32				0	1			9	6	18	28
Systemic Organ Regulation	—	58				0	1	1	37	10	44	12	82
Advanced Therapeutic Sciences	—	44				0	1	1	12	4	35	15	48
Subtotal	324	1,071	124	64	101	60	225	124	259	109	250	96	208

Graduate School of Health Care Sciences

as of May, 1, 2013													
Specialized Courses	Capacity of Admission	Total Capacity	Master's Program			Doctoral Program					Total		
			1st year	2nd year	Subtotal	1st year	2nd year	3rd year	4th year	Subtotal			
Comprehensive Health Nursing Sciences	M 17 D 8	M 34 D 24	17	15	17	16	34	31	15	13	11	9	34
Biomedical Laboratory Sciences	M 12 D 6	M 24 D 18	14	12	13	10	27	22	2	2	4		12
Subtotal	M 29 D 14	M 58 D 42	31	27	30	26	61	53	17	15	15	9	46

M: Master's Course D: Doctor's Course

Biomedical Science PhD Program

as of May, 1, 2013													
Specialized Courses	Capacity of Admission	Total Capacity	Master's Program			Doctoral Program					Total		
			1st year	2nd year	Subtotal	1st year	2nd year	3rd year	4th year	Subtotal			
Bioinfomatics	—	M 8 D 8	0	0	3<1>	1	3<1>	1	0	0	1<1>	0	12<4>
Functional Biology	—	M 7 D 7	0	0	3<3>	3	3<3>	3	0	0	3<2>	1	6
Subtotal	—	M 15 D 15	0	0	6	4	6	4	0	0	4	1	18

M: Master's Course D: Doctor's Course

	Capacity of Admission	Total Capacity	Master's Program			Doctoral Program					Total		
			1st year	2nd year	Subtotal	1st year	2nd year	3rd year	4th year	Subtotal			
Total	367	1,171	155	91	137	90	292	181	276	124	269	106	272

Research Students

Graduate Schools	Number of Students	Female Students (in number)	International Students (in number)
Graduate School of Medical and Dental Sciences	198	80	16
Graduate School of Health Care Sciences	3	3	1
Total	201	83	17

*Note 1: The numbers in red indicate female graduate students.

*Note 2: The numbers in angle brackets < > indicate Advanced Oral Science International Program Students.

*Note 3: The numbers in brackets [] indicate International students in the Graduate Public Health Leader Course.

*Note 4: The numbers in parentheses () indicate Biomedical Science International Education Program students.

Number of Undergraduate Students

Faculty of Medicine

		Capacity of Admission	Total Capacity	1st year		2nd year		3rd year		4th year		5th year		6th year		Total	
School of Medicine		101 {5}	581	103	30	117 (5)	36 (2)	105 (3)	33 (1)	97 [5]	31	92 [5]	30 [1]	87 [8]	30 [1]	601 (8) [18]	190 (3) [2]
School of Health Care Sciences	Nursing Science	55	220	55	53	57	57	58	55	54	50					224	215
	Medical Technology	35	140	36	29	40	34	37	28	35	31					148	122
	Subtotal	90	360	91	82	97	91	95	83	89	81					372	337

Faculty of Dentistry

		Capacity of Admission	Total Capacity	1st year		2nd year		3rd year		4th year		5th year		6th year		Total	
School of Dentistry		53	334	56	29	59	22	48	24	58 [1]	23 [1]	53 [1]	22	60 [8]	29 [5]	334 [10]	149 [6]
School of Oral Health Care Sciences	Oral Health Care Science	22 <6>	105	25	25	23	22	26 [5]	25 [5]	32 [6]	32 [6]					106 [11]	104 [11]
	Oral Health Engineering	10 {5}	45	11	8	16 (5)	11 (2)	14 (5)	6 (2)	0	0					41 (10)	25 (4)
	Subtotal	32	150	36	33	39	33	40	31	32	32					147	129

as of May, 1, 2013																		
	Capacity of Admission		Total Capacity		1st year		2nd year		3rd year		4th year		5th year		6th year		Total	
Total	276	1,425	286	174	312 (10)	182 (4)	288 [5] (8)	171 [5] (3)	276 [12]	167 [7]	145 [6]	52 [1]	147 [16]	59 [6]	1,454 [39] (18)	805 [19] (7)		

*Note 1: The numbers in red indicate female students.
*Note 2: The numbers in angle brackets < > indicate the maximum number of students who can transfer into the third-year program from other institutions. They are not included in the numbers above them.
*Note 3: The numbers in angle brackets { } indicate the maximum number of students who can transfer into the second-year program from other institutions. They are not included in the numbers above them.
*Note 4: The numbers in brackets [] indicate the students transferring into the third-year program from other institutions.
*Note 5: The numbers in brackets () indicate the students transferring into the second-year program from other institutions.

Degrees Conferred

Doctoral Programs

as of May, 1, 2013										
	Doctor									
	Philosophy in Medical Science	Philosophy in Dental Science	Philosophy	Nursing Science	Medical Laboratory Science	Philosophy in Bio-informatics	Philosophy in Functional Biology	Philosophy in Biomedical Science	Philosophy in Science	Philosophy in Engineering
Academic Year 2012	103	91	8	9	3	1	2	2	15	1
Total	1,944	2,127	149	93	52	2	3	4	80	3

Granted by Merit of Thesis

as of May, 1, 2013					
	Doctor				
	Philosophy in Medical Science	Philosophy in Dental Science	Philosophy	Nursing Science	Medical Laboratory Science
Academic Year 2012	3	3	0	2	1
Total	1,755	511	23	24	14

Master's Programs

as of May, 1, 2013											
	Master										
	Medical Science	Dental Science	Medical Administration (1)	Medical Administration (2)	Nursing Science	Medical Laboratory Science	Bioinformatics	Functional Biology	Biomedical Science	Science	Engineering Philosophy
Academic Year 2012	48	3	5	9	21	12	2	1	3	36	1 0
Total	410	15	70	79	299	244	14	4	10	281	8 2

Educational Facilities

Enrollment

as of May, 1, 2013			
	1st year	2nd year	Total
School of Dental Technologists		6 3	6 3

*Note 1: The numbers in red indicate female students.

Grants-in-Aid for Scientific Research (Fiscal Year 2013)

			as of May, 1, 2013		
	Number	Amount		Number	Amount
Grant-in-Aid for Scientific Research on Priority Areas	0	0	Grant-in-Aid for Scientific Research (A)	10	126,360
Grant-in-Aid for Challenging Exploratory Research	77	130,650	Grant-in-Aid for Scientific Research (B)	62	342,550
Grant-in-Aid for Young Scientists (A)	8	79,690	Grant-in-Aid for Scientific Research (C)	191	317,070
Grant-in-Aid for Young Scientists (B)	156	264,940	Grant-in-Aid for Research Activity Start-up	6	8,060
Grant-in-Aid for JSPS Fellow	24	22,400	Grant-in-Aid for Scientific Research on Innovative Areas	36	429,520
Grant-in-Aid for Scientific Research (S)	3	103,870	Grant-in-Aid for Encouragement of Scientists	4	2,400
		in thousands of yen	Total	577	1,827,510
					in thousands of yen

Entrusted Research Funds (Fiscal Year 2012)

	Number	Amount
Entrusted Research	135 (37)	1,606,183 (102,494)
Cooperative Research	178 (102)	282,858 (73,256)
Donation for Promotion of Learning	853	1,341,932
Total	1,166	3,230,973

* A multi-year contract means the research was conducted for more than two years including the fiscal year 2011. The "Amount" is the sum of all the money entrusted to the projects in the fiscal year 2011.
* Figures in parentheses indicate values related to multi-year projects.

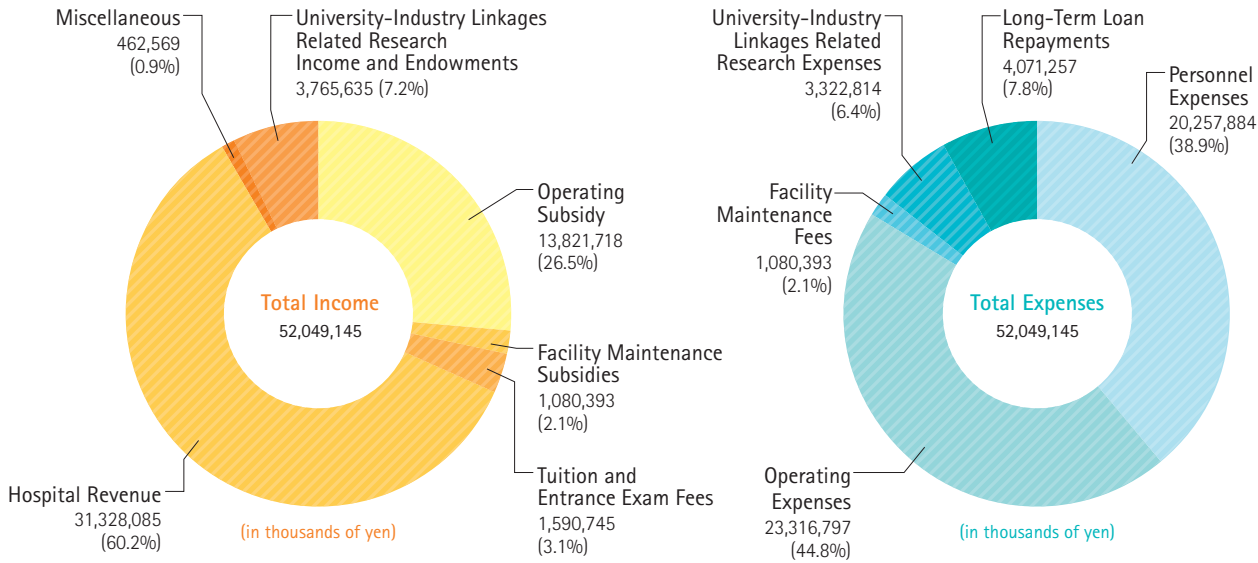
Grants-in-Aid for Scientific Research from Ministry of Health, Labour and Welfare

			as of May, 1, 2013		
	Number	Amount		Number	Amount
Research on Policy Planning and Evaluation	1	40,000	Comprehensive Research on Life-Style Related Diseases including Cardiovascular Diseases and Diabetes Mellitus	1	5,800
Research on Statistics and Information	1	2,100	Research on Rare and Intractable Diseases	12	369,802
Research on Regenerative Medicine for Clinical Application	1	41,600	Comprehensive Research on Disability Health and Welfare	5	40,908
Research on Global Health Issues	3	21,022	Research on Region Medical	4	20,990
Research on New Drug Development	1	52,000	Research on Health Security Control	1	4,700
Research on Medical Device Development	1	35,100	Research on Regulatory Science of Pharmaceuticals and Medical Devices	1	5,000
Third Term Comprehensive Control Research for Cancer	3	29,000	Total	35	668,022
		in thousands of yen			in thousands of yen

Endowed Departments

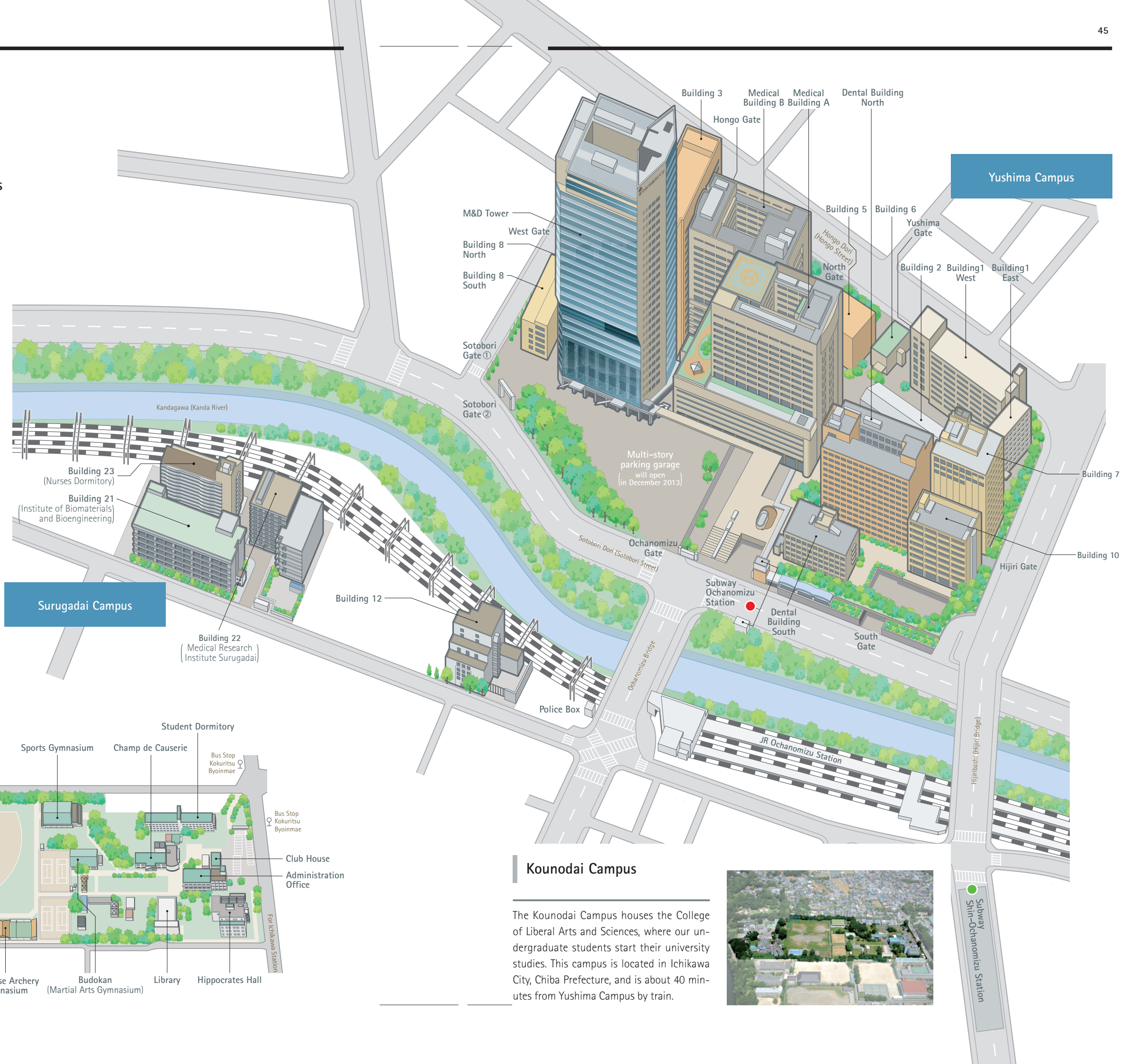
			as of May, 1, 2013		
	Departments / Institutes	Term		Donor	
Graduate School of Medical and Dental Sciences	Department of Pharmacovigilance	H17.4.1 - H28.3.31		Mitsubishi Tanabe Pharma Corporation / Takeda Pharmaceutical Co., Ltd. / Abbvie Inc. / Eisai Co., /Chugai Pharmaceutical Co., Ltd. / Bristol-Myers K.K. / Astellas Pharma Inc. / UCB Japan Co., Ltd.	
	Department of Nanomedicine	H17.4.1 - H28.3.31		Dai Nippon Printing Co., Ltd	
	Department of Translational Oncology	H17.10.1 - H26.9.30		Taiho Pharmaceutical Co., Ltd.	
	Department of Liver Disease Control	H18.4.1 - H28.3.31		Chugai Pharmaceutical Co., Ltd. / Toray Industries, Inc. / Dainippon Sumitomo Pharma Co., Ltd. / Bristol-Myers K.K. / MSD K.K.	
	Department of Cartilage Regeneration	H18.6.1 - H27.3.31		Zimmer K.K. / Kyocera Medical Corporation	
	Department of Advanced Therapeutics for GI Diseases	H19.4.1 - H27.3.31		Kyorin Pharmaceutical Co., Ltd. / Asahi Kasei Medical Co., Ltd. / Ajinomoto Pharma Co., Ltd./ UCB Japan Co., Ltd. / Otsuka Pharmaceutical Co., Ltd. / Eisai Co., Ltd. / JIMRO Co., Ltd. / Zeria Pharmaceutical Co., Ltd. / Mitsubishi Tanabe Pharma Corporation / Abbvie Inc. / Kyowa Hakko Kirin Co., Ltd.	
	Department of Orthopaedic Research and Development	H19.8.1 - H26.3.31		Stryker Japan K.K. / Medtronic Sofamor Danek, Co., Ltd. / Hoya Corporation / Itoh Medical, Inc. / Teijin Pharma Limited	
	Department of Sleep Modulatory Medicine	H21.6.1 - H27.3.31		Fukuda Denshi Co., Ltd. / Teijin Home Healthcare Limited / GlaxoSmithKline Co., Ltd. / Philips Respiration GK / Saiwai Medix Co., Ltd. / Terumo Medical Care K.K. / Fukuda Life Tech Tokyo Co., Ltd.	
	Department of Pediatrics, Perinatal and Maternal Medicine	H22.4.1 - H26.3.31		Ibaraki Prefecture	
	Department of Chronic Kidney Disease	H22.4.1 - H27.3.31		Baxter Limited / Otsuka Pharmaceutical Co., Ltd. / Shinjinkai Medical Corporation / Seishokai Medical Corporation / Chugai Pharmaceutical Co., Ltd	
	Department of Organ Network and Metabolism	H23.4.1 - H26.3.31		Shionogi & Co., Ltd.	
	Department of Joint Reconstruction	H23.5.1 - H26.4.30		Biomet Japan, Inc / Johnson & Johnson K.K.	
	Department of Women's Health	H24.4.1 - H28.3.31		Kikkoman Corporation	
	Department of Advanced Surgical Technology Research and Development	H24.9.1 - H27.8.31		Nipro Corporation / Edwards Lifesciences Corporation / Senko Medical Instrument Mfg.Co., Ltd.	
	Department of Preemptive Medicine and Metabolism	H25.4.1 - H28.3.31		Dainippon Sumitomo Pharma Co., Ltd. / Mitsubishi Tanabe Pharma Corporation	
	Department of Arteriosclerosis and Vascular Biology	H25.4.1 - H28.3.31		Arteriosclerosis Res. Foundation	

Finances (Fiscal Year 2013 Budget)

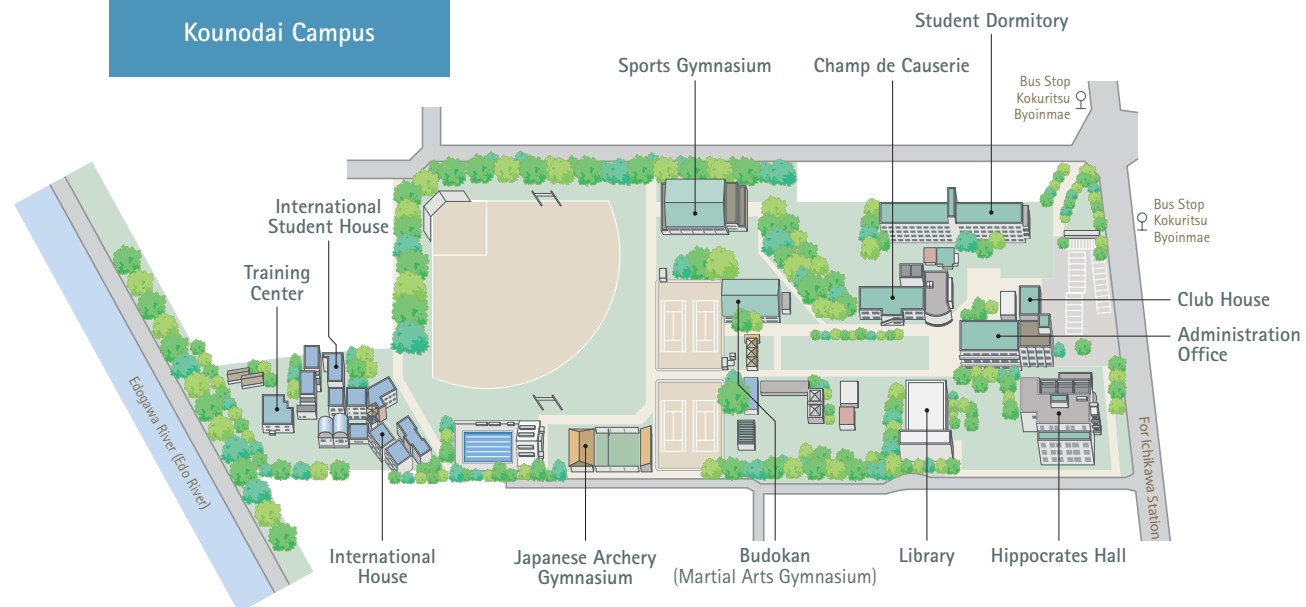


Yushima and Surugadai Campuses

TMDU is headquartered in the center of Tokyo, amid many sites of historic interest. The main campus, Yushima Campus, and the satellite campus, Surugadai Campus, contain our research buildings and hospitals. At these campuses, highly specialized education in clinical and basic research contexts is offered so as to foster health care professionals with advanced knowledge and skills.



Kounodai Campus



Kounodai Campus

The Kounodai Campus houses the College of Liberal Arts and Sciences, where our undergraduate students start their university studies. This campus is located in Ichikawa City, Chiba Prefecture, and is about 40 minutes from Yushima Campus by train.



Location of University Campuses and Buildings (as of May 1, 2013)

Yushima Campus

Grounds 45,115m²
Buildings 249,646m²
(sq. metre)

- Administration Bureau
- Graduate School of Medical and Dental Sciences
- Graduate School of Health Care Sciences
- Biomedical Science PhD Program

5-45, Yushima 1 chome, Bunkyo-ku, Tokyo 113-8510 03-3813-6111

- Faculty of Medicine
- Medical Hospital

5-45, Yushima 1 chome, Bunkyo-ku, Tokyo 113-8519 03-3813-6111

- Faculty of Dentistry
- Dental Hospital
- School of Dental Technologists

5-45, Yushima 1 chome, Bunkyo-ku, Tokyo 113-8549 03-3813-6111

Surugadai Campus

Grounds 5,597m²
Buildings 19,912m²
(sq. metre)

- Institute of Biomaterials and Bioengineering

3-10, Kanda Surugadai 2 chome, Chiyoda-ku, Tokyo 101-0062 03-5280-8000

- Medical Research Institute

3-10, Kanda Surugadai 2 chome, Chiyoda-ku, Tokyo 101-0062 03-5280-8050

- Institute for Library and Media information Technology
- Student Support and Health Administration Organization
- Health Administration Office for Employees
- Research and Industry-University Alliance Organization
- Center for Education Research in Medicine and Dentistry
- Research Center for Medical and Dental Sciences
- Center for Experimental Animal
- International Exchange Center
- Life Science and Bioethics Research Center
- Center for Interprofessional Education
- Bioresource Research Center
- Center for Stem Cell and Regenerative Medicine
- Center for Sports Medicine and Sports Dentistry
- Hospital Administration Planning Division
- Public Relations Division

5-45, Yushima 1 chome, Bunkyo-ku, Tokyo 113-8510 03-3813-6111

Kounodai Campus

Grounds 61,287m²
Buildings 13,900m²
(sq. metre)

- College of Liberal Arts and Sciences
- Institute for Library and Media information Technology-Kounodai Branch Library
- Health Administration Center, Kounodai Branch

8-30, Kounodai 2 chome, Ichikawa-city, Chiba Prefecture 272-0827 047-300-7103

- International House
- International Student House

8-1, Kounodai 2 chome, Ichikawa-city, Chiba Prefecture 272-0827 047-371-7936

		Grounds	Buildings
Toda Boat-House	60, Todakoen 1 chome, Toda-city, Saitama Prefecture	696m ²	479m ²
Akakura Resort House	6120, Akakura, Myoko-city, Niigata Prefecture	1,621m ²	434m ²
Tateyama. Oga-Resort House	Oga, Tateyama-city, Chiba Prefecture	4,357m ²	834m ²
Hakusan Residence Housing	36-3, Hakusan 2 chome, Bunkyo-ku, Tokyo	497m ²	91m ²

		Grounds	Buildings
Wakamiyacho Residence Housing	26, Wakamiya-cho, Shinjuku-ku, Tokyo	995m ²	—
Tonoyama Residence Housing	50-3, Chuo 1 chome, Nakano-ku, Tokyo	1,974m ²	1,945m ²
Etchujima Residence Housing	3, Etchujima 1 chome, Koto-ku, Tokyo	17,967m ²	25,480m ²
The Ossuary (Nokotsu-do)	10-1, Kounodai 3 chome, Ichikawa-city, Chiba Prefecture	(115m ²)	—

Total	Grounds 140,106m ² (115m ²) (sq. metre)	Buildings 312,721m ² (sq. metre)
-------	--	---

*The numbers in parentheses () show temporary or long-term rental grounds and buildings.

Access

Yushima and Surugadai Campuses

- JR Line Ochanomizu Sta.
- Subway Marunouchi Line Ochanomizu Sta.
- Subway Chiyoda Line Shin-Ochanomizu Sta.

Kounodai Campus

- Keisei Line Kounodai Sta.
- Sobu Line Ichikawa Sta.
- Bus for Matsudo Sta. from No.1 Keisei Bus Stop to Kokuritsu Byoinmae

