

第6回 東京医科歯科大学 駿河台シンポジウム

# 6<sup>TH</sup> SURUGADAI SYMPOSIUM

## Molecular, Cellular & Integrative Mechanisms of Intractable Diseases

### 難治疾患克服への挑戦

Date

November 27 (Tue), 2007

9:00 a.m

4:50 p.m

Venue

Tokyo Medical and Dental University

東京医科歯科大学 歯学部特別講堂

9:00-9:05 **Introduction** 野田研究所長

**Symposium I** 座長:山梨、田中

9:05-9:35 Dr. Yoshihiro Ogawa (Tokyo Medical & Dental University)  
Molecular mechanisms of obesity-induced adipose tissue inflammation

9:35-10:25 Dr. Philipp E. Scherer (The University of Texas Southwestern Medical Center)  
Adipose tissue: Contribution to insulin sensitivity and metabolic syndrome

10:25-10:35 coffee break

10:35-11:05 Dr. Tetsushi Furukawa (Tokyo Medical & Dental University)  
Non-genomic regulation of cardiac ion channels by sex hormones

11:05-11:55 Dr. Colleen E. Clancy (Cornell University)  
Mutations and electric disease: Insight from model studies

**Symposium II** 座長:小川、古川

13:10-13:40 Dr. Kohichi Tanaka (Tokyo Medical & Dental University)  
A new animal model of autism: Glutamatergic hyperactivity in key neural systems

13:40-14:30 Dr. Akira Sawa (The Johns Hopkins University)  
Translational Neuroscience for Major Mental Illnesses

14:30-14:45 coffee break

14:45-15:35 Dr. Angela Vincent (University of Oxford)  
Autoantibodies to acetylcholine receptors and muscle specific kinase in myasthenia gravis

15:35-16:15 Dr. David Beeson (University of Oxford)  
Molecular mechanisms underlying congenital myasthenic syndromes

16:15-16:45 Dr. Yuji Yamanashi (Tokyo Medical & Dental University)  
Dok-7/MuSK signaling and a congenital myasthenic syndrome

16:45-16:50 **Closing Remarks** 鏑田研究部長

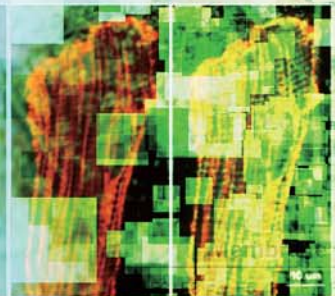
主催: 東京医科歯科大学 難治疾患研究所  
大学院疾患生命科学研究所・生命情報科学教育部

参加費無料・参加登録不要・Admission free

Secretary General: Narumi Kawayanagi (MRI, TMD)  
Tel: 03-5280-8052, E-mail: mri.adm@cmn.tmd.ac.jp  
[http://www.tmd.ac.jp/mri/mri\\_top.html](http://www.tmd.ac.jp/mri/mri_top.html)



Molecular  
Cellular

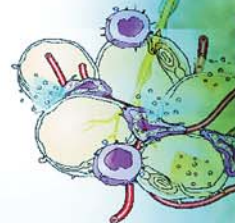


Cells

synapses

Networks

Behavior



Adipose Tissue Remodeling