

4th Surugadai Symposium

Genetic, Pathophysiological, Molecular, and Therapeutic Approach to Intractable Diseases

難治疾患の克服を目指して

Date

September 9 (Fri), 2005

9:55 a.m. 2005年9月9日(金)

Venue

Kagaku-kaikan Hall

化学会館ホール 千代田区神田駿河台1-5
Tel: 03-3292-6161

Speakers:

Jean-Louis MANDEL *IGBMC/CNRS/INSERM, France*

Hitoshi OKAZAWA *TMDU, Japan*

Gisèle BONNE *INSERM, Institut de Myologie, France*

Akinori KIMURA *TMDU, Japan*

Andreas RADBRUCH *Deutsches Rheuma-Forschungszentrum, Germany*

Wen-Chen YEH *University of Toronto, Canada*

Hiroshi NISHINA *TMDU, Japan*

Hirobumi TERAOKA *TMDU, Japan*

Toshinori NAKAMURA *TMDU, Japan*

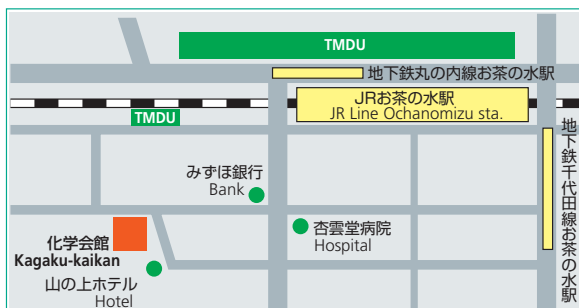
Peter W. ROSSI *Rehab Hospital of the Pacific, USA*

Sponsors:

Medical Research Institute & School of Biomedical Science,
Tokyo Medical and Dental University

Organizer:

Division of Pathophysiology, MRI, TMDU



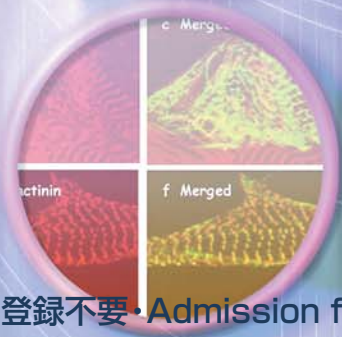
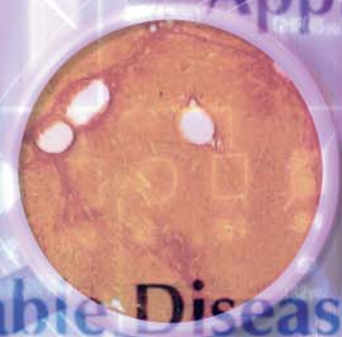
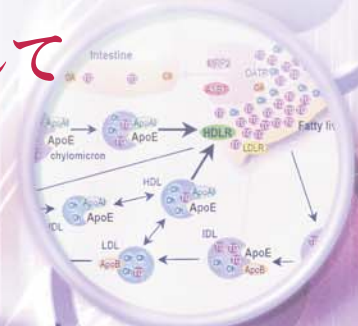
Secretary General: Shichijiro AKITA (MRI, TMDU)
Tel: 03-5280-8052, E-mail: mri.adm@cmn.tmd.ac.jp
http://www.tmd.ac.jp/mri/mri_top.html

Genetic

Symposium

Approach

Intractable Diseases



参加費無料・参加登録不要・Admission free